



Innovate
UK

Investor Partnerships

A directory of selected
investor partners

Contents

1818 Venture Capital	5	Boundary Capital Partners	32
24 Haymarket Limited	6	British Design Fund	33
ACT Venture Partners	7	Cambridge Angels	34
Ada Ventures	8	Cambridge Enterprise	35
Aer Ventures	9	Cambridge Future Tech	36
Albion VC	10	Cambridge Innovation Capital	37
Alma Angels	11	Cancer Research Horizons	38
Amadeus Capital Partners	12	Carbon13	39
Angel Academe	13	Catapult Venture Managers Limited	40
Angels@Essex	14	Chrysalix Venture Capital	41
Anglo American Decarbonisation Ventures	15	Cibus Capital	42
Antares Ventures	16	Clarendon Fund Managers Limited	43
Anticus Partners	17	Clay Capital	44
Antler	18	Clean Growth Fund	45
Apollo Health Ventures	19	Committed Capital	46
Archangels	20	Concept Ventures	47
Ascension Ventures Limited	21	Constructor Capital	48
Astanor	22	Cornerstone VC	49
Atlas Ventures	23	Cottagequinn Enterprises Ltd	50
Baltic Ventures	24	Counteract	51
Barclays Climate Ventures	25	CPT Capital	52
Beringea	26	Creative UK	53
Black Seed Ventures	27	Creator Fund	54
Blackfinch Ventures	28	Daring Capital	55
Bloc Ventures	29	Deep Science Ventures	56
Blue Lake VC	30	Deepbridge Capital	57
Blue Ledge Capital	31	Deeptech Seed Fund	58

Delin Ventures	59	HERmesa	90
Development Bank of Wales	60	HG Ventures	91
Diffusion Capital	61	Hiro Capital	92
DSW Venture Capital LLP	62	Hoxton Ventures	93
Earlymarket LLP	63	Impact X	94
East Innovate Ltd	64	IP Group plc	95
Ebico	65	IQ Capital Partners LLP	96
Edge VC	66	Jenson Funding Partners LLP	97
EHE Venture Studio	67	Kelvin Capital Limited	98
EIT InnoEnergy	68	Kero	99
EKA Ventures	69	KHP Ventures	100
Elbow Beach Capital	70	Kidney Research UK	101
Elsoms Seeds	71	Kindred Capital	102
Emles Venture Partners	72	LCR Ventures Limited (LYVA Labs)	103
Empirical Ventures	73	Lifted Ventures	104
Eos Advisory	74	London Venture Partners	105
Epidarex Capital	75	Longwall Venture Partners LLP	106
Equity Gap	76	Low Carbon Innovation Fund	107
ETF Partners	77	M Ventures	108
Evenlode Impact	78	Macmillan Cancer Support	109
Exceptional Ventures	79	Maven	110
Extantia	80	Mercia Ventures	111
Fearless Adventures	81	Mercuri	112
firstminute capital	82	Metis Ventures	113
Foresight WAE Technology Fund	83	Midven	114
FOV Ventures	84	Minerva Business Angels	115
Future Planet Capital	85	MMC Ventures Limited	116
GC Angels	86	Molecule to Medicine	117
Green Angel Ventures	87	Nesta	118
Henley Business Angels	88	NextEnergy Group	119
Heran Partners	89	NoBa Capital	120

Northern Gritstone Limited	121	SEFI UK	153
Northern Investor Hub	122	SETsquared	154
Northstar Ventures Limited	123	SFC Capital Ltd	155
o2h Ventures	124	Sie Ventures	156
Octopus Ventures	125	Social Tech Trust	157
Old College Capital	126	SOSV	158
OnePlanetCapital	127	Speedinvest	159
Oxford Science Enterprises Plc	128	Start Codon	160
Oxford Technology	129	SuperSeed	161
Par Equity LLP	130	Sure Valley Ventures	162
Paragon Ventures	131	Sustainable Ventures	163
Parkwalk	132	Symvan Capital	164
PDS Ventures	133	Techstart Ventures	165
Perfect Redd	134	Tern PLC	166
Pioneering Ventures Limited	135	The Conduit Connect	167
Playfair Capital	136	The Games Angels	168
Praesidium S.A.	137	The Yield Lab	169
Praetura Ventures Limited	138	Tricapital Angels	170
Prostate Cancer Research	139	Triple Point Ventures	171
Puma Growth Partners	140	TSP Ventures	172
Qantx	141	Twin Path Ventures	173
Qubis	142	Two Magnolias	174
Rabo Investments	143	Unilever	175
Redalpine	144	University of Sussex Business Angels	176
Regenerate Ventures	145	Vala VC	177
Resolution Foundation	146	Vectr7	178
River Capital	147	Velocity Capital	179
Round2	148	World Fund	180
Salica Investments	149	Zero Carbon Capital	181
Saxovent Smart Eco Investments GmbH	150	Zinc Ventures	182
SCVC	151		
Seneca Partners	152		



1818 has been backing the best founders since 2012. We are considered a leading European FinTech and InsurTech investor and have built a portfolio of category leaders, providing investors with market-leading venture returns.

We aim to add significant value to our portfolio, giving us an edge (and our LPs a tangible output). Founders gain access to our extensive expertise and a well-established ecosystem and we emphasise a strong local presence. Success is rooted not only in the initial investment but also in nurturing the environment for growth.

1818 Venture Capital

1818venturecapital.com

Contact:

hello@1818venturecapital.com



24Haymarket invests aligned private capital to accelerate the commercial success of businesses at the early stages of commercial adoption. Investing up to £5 million in a round (with a target initial investment of £2-3 million) and up to £10 million in any single company over a number of rounds.

We operate a hybrid funding model with over 100+ high profile operator, entrepreneur and investor angel investors who have collectively invested over £100 million in our portfolio. This is complemented by two committed capital vehicles to better support the capital demands of our portfolio as it successfully scales. To-date we have backed over 60 high-growth businesses.

We focus our efforts on a few key areas with strong growth tailwinds including cybersecurity, climate tech, supply chain and logistics, IoT/ robotic automation and

24Haymarket Ltd

24haymarket.com

Contact:

Alex Brown

alex@24haymarket.com

digital healthcare. We actively provide post-investment support via board involvement through our angel syndicate with the addition of strategic and tactical commercial support (in particular the facilitation of commercial introductions). We have an excellent track record of both enabling later-stage follow-on investment and trade and private equity exits.



ACT Venture Partners (ACT) is an experienced early-stage VC investor with a proven track record of backing deep tech ventures in Europe and the UK. The fund manager and the funds under management are regulated in the Netherlands under the EU AIF and AIFM. We have a dedicated investment team here in the UK.

We define the deep tech sector as one that includes spin-offs and startups whose business is built around unique, differentiated, often protected or hard-to-reproduce technological or scientific advances. Our primary focus is the following technology areas: (1) Emerging Digital Technologies, (2) Technologies for Healthcare, and (3) Technologies Serving Sustainability.

We invest predominantly starting from the Seed stage and continuing in the following rounds. We prefer an ownership target of 10-20% per deal by investing EUR 500k - EUR 1 Mn as an initial investment.

ACT Venture Partners

actvp.vc

Contact:

info@actvp.vc

We also like to lead or co-lead the investment rounds. We can allocate up to EUR 5 Mn per deal for follow-on rounds.

Our three pillars of the selection criteria are - the team, problem-solution fit, and product-market fit.

Early-stage deep tech ventures have to cope with numerous challenges. We help them on these from day one: (a) growth strategy, (b) Series A readiness, (c) Catalysing Networking, and (d) corporate governance.

For applications: info@actvp.vc



Ada Ventures is a pre-seed inclusive venture capital firm that invests in the best, not just the best-connected. They find and fund the Ada Lovelaces of today.

Backing European founders building businesses for a better human future. They invest £250K - £1M in technology companies across climate equity, economic empowerment and healthy ageing. In the 5 years since they launched, they have invested in fast growing and highly impactful companies like Bubble, ESTHER and Mat Nex.

Ada Ventures

adaventures.com

Submit Your Deck:

adaventures.com/send-us-your-pitch



Aer Ventures is a business accelerator for entrepreneurs focused on making a meaningful positive impact on the resource and environmental challenges facing the world.

We invest in businesses that can support and drive the decarbonisation and electrification of the economy as part of the challenge to achieve Net Zero, including businesses that support a more sustainable circular economy.

Our focus areas include:

- Transportation and Logistics transformation;
- Renewable energy generation & storage;
- Circular Economy including waste reduction and repurposing and critical materials; and
- Energy efficiency and optimisation.

We are usually the first investor at the pre-Seed or Seed stage and we invest up to £1Million with first stage investments typically between £50k and £500k. We invest in UK head-quartered businesses across the UK where the investment round qualifies for SEIS and/or EIS.

Aer Ventures is run by experienced entrepreneurs and investors with experience and a track record in the sustainability and critical materials sectors. We leverage

Aer Ventures

aerventures.uk

Contact:

[investorpartnerships](mailto:investorpartnerships@aerventures.uk)

[@aerventures.uk](mailto:investorpartnerships@aerventures.uk)

our sector expertise, knowledge and networks to help businesses with potentially high impact solutions scale quickly, providing investment and business support to help entrepreneurs fund, develop, test and commercialise their technologies quickly and to help reduce risks. This includes providing strategic advice, product development, business development, marketing and operational scaling support and expertise.

Aer Ventures is Authorised and Regulated by the Financial Conduct Authority and we often work with Innovate UK in partnership within our investee companies.

We are always happy to speak to entrepreneurs working in the areas we focus on to explore whether there is a potential fit – please contact us with a summary of the opportunity via investorpartnerships@aerventures.uk.



AlbionVC

AlbionVC supports visionary founders with long-term capital and scale-up expertise. It partners with UK early-stage B2B software, deeptech and healthcare companies. AlbionVC manages c. \$1 billion of venture funds, currently invested in over 60 companies.

Our VCTs invest from Seed to Series B in software and healthcare businesses. UCL Technology Fund invests from Pre-Seed to Series A in businesses founded on world-class research in life sciences, physical sciences and computer sciences from University College London.

We are supportive investors, not operators, who strive for excellence and show ethics and humility in our interactions with founders and each other. We invest in startups with potential to grow into enduring companies that reshape industries. In doing so we achieve top quartile returns for our investors.

Our experience of investing over the last 26 years has given us the ability to spot companies that are set to become global category leaders and has shaped our

Albion VC

albion.vc

Contact:

albion.vc/contact/

understanding of the tools and support we can offer them on the journey.

All of this is only possible because of the long term, considerate yet high performing culture, embodied by an inspiring team, half of whom have been doing this for well over a decade.



Alma.

Alma Angels is a diverse and active community on a mission: Generate \$1 trillion in women-led wealth by 2050.

Since 2020, we have brought together and trained over 550 angel investors who have invested into 200+ women (co)founders building tech or IP-rich ventures with global ambitions. These companies have gone on to raise more than £300m to date. Alma Angels is committed to backing 10,000 women founders by 2035.

Alma Angels

alma-angels.com

Contact:

hello@alma-angels.com

LinkedIn:

[alma-angels](https://www.linkedin.com/company/alma-angels)



Amadeus was founded in 1997 by Anne Glover (formerly at APAX Partners and Bain & Co) and Hermann Hauser (co-founder of Acorn Computers which spun out ARM, the microprocessor giant). In the subsequent 25 years, Amadeus has invested more than \$1 billion across 22 funds and remains a trailblazer in European venture capital.

Anne and Hermann are active in the firm and serve on the Investment Committee of the funds. The firm has backed more than 190 companies and returned funds to its underlying LPs through 90 exits including 17 IPOs. Amadeus invests in deep tech and tech-enabled companies that have the potential to become global champions. Amadeus has three strategies namely, Early Stage, Growth European and Growth LatAm and operates from London, Cambridge and Oxford in the UK, San Francisco and São Paulo.

The team focusing predominantly on the UK market comprises four experienced Partners: Amelia Armour, Dr Manjari Chandran-Ramesh, Nick Kingsbury and Pierre Socha. This team benefits from in-depth sector experience in deep tech venture investing and covers sectors like Artificial Intelligence (AI), Cybersecurity, Photonics, Quantum, Digital Health, Medical Technology, Novel Materials, Environmental and Climate Tech. They have raised more than £210 million and deployed over £100 million since 2013 into early-stage deep tech companies.

Amadeus Capital Partners

amadeuscapital.com/

Contact:

innovateuk@amadeuscapital.com

The company prides itself on its diversity internally, across the portfolio and across the broader network. Amadeus has over 50% gender diversity and people from nine nationalities speaking 12 languages. As well as diverse characteristics, education and work experience, the team offers diversity of thought with backgrounds in entrepreneurship, investment banking, accounting and deep scientific knowledge.

The investment approach is to pick companies that have a disruptive and deep technical differentiation coupled with a star team addressing a huge and growing market.



ANGEL ACADEME

Angel Academe is the UK's leading angel network for women. We help female founders who can demonstrate some early success with their tech startup access a unique pool of engaged, mainly female investors. Since 2014 Angel Academe investors have backed 50+ startups through 100+ funding rounds, helping them raise well over £150m from angels, VCs and family offices to continue to grow their med tech, clean tech, fin tech and enterprise software businesses. Our investor-members are successful entrepreneurs and senior leaders who want to be part of a diverse, experienced and professionally managed trust network.

Investment criteria:

- You're a female founder or co-founder (usually CEO or CTO) who owns at least 20% of founder equity in the business (pre-dilution). You will run the fundraising activity with our investors
- Your technology startup has an innovative solution to an important global problem in areas including fin tech, med tech (digital and devices), ed tech, cyber security, clean tech and enterprise
- You have relevant industry, technical and startup experience in your team and a strong vision for the future of your business
- You have a working product, business model and early market traction



Angel Academe

angelacademe.com

Contact:

info@angelacademe.com

- B2B businesses are preferred but we will consider B2C opportunities with significant and growing revenue, ideally recurring
- You can articulate clear differentiation from your competition and good barriers to entry for potential new entrants
- You're addressing a large global market and can show how you will return a minimum 10X to investors within 3-10 years
- You're a pre-seed to Series A UK business with a £1m - £15m pre-money valuation and eligible for SEIS and/or EIS tax relief
- You're raising £250,000-£5,000,000 of equity investment in a priced round
- You're able and willing to work with external advisors and recognise the value of a diverse cap table

The fastest way onto our radar and in front of our angel investors is via our online application - angelacademe.com/founders



Angels@Essex is an invitation-only investment platform that links angel investors to entrepreneurs with innovative ideas, allowing new disruptive technologies to flourish.

The Angels@Essex platform allows entrepreneurs to display their pitch decks to a select number of invited investors.

We take no incentives, no commissions, and no fees. It's secure and easy to use - once you have gone through our investment readiness full eligibility appraisal and due diligence process, you can get started right away.

Our focus is on innovative and market disruptive technologies, probably B2B, research intensive with MVP. If you are not sure if you are eligible, why not just ask us first, we would be pleased to explore any potential ideas with you.



Angels@Essex

bit.ly/angelsessex

Contact:

uez@essex.ac.uk

Our University of Essex is noted for its research into deep tech across many sectors that include Health Tech, FinTech, AgriTech, AI, VR, AR, Data Science, but not exclusively. Why not tap into this wide resource availability.



Anglo American's Decarbonisation Ventures team invests in start-ups with the potential to achieve greater than 0.5Gt of decarbonisation per year of scale.

With over a decade of corporate venturing experience, we are committed to making a positive impact beyond our operations, in order to unlock the potential of technological innovation and cross-industry collaboration.

Type of companies we invest in - Early-stage start-ups, between pre-seed round and Series A investment rounds. We prioritise investments in the following focus areas: sustainable materials (including the steel value chain); clean energy (beyond wind and solar; and including storage solutions); carbon and nature; and methane and agriculture.

Anglo American Decarbonisation Venture

angloamerican.com

Contact:

decarb.ventures@angloamerican.com



Catalysing Deep Tech for a Sustainable Southeast Asia.

At Antares Ventures, we partner with visionary founders developing breakthrough deep-tech solutions that drive sustainability, resource efficiency, and industrial transformation. As a Seed to Series A investor, we focus on innovations in energy transition, agritech, AI-driven healthcare, mobility, and resilient infrastructure, with a particular emphasis on Southeast Asia's fast-growing economies.

Why Southeast Asia?

Home to 650 million people, rapid urbanisation, and accelerating industrial demand, Southeast Asia presents an unparalleled opportunity for deep-tech companies. Industries across the region—from agriculture to semiconductors—are undergoing rapid transformation, creating demand for scalable, cross-sector solutions in decarbonisation, automation, and advanced materials.

Beyond Capital: Strategic Market Access

Antares provides more than funding—we enable market expansion. Our Deep Tech Launchpad connects startups with corporates, industrial leaders, and government stakeholders, facilitating commercial

Antares Ventures

antares.venture

Contact:

innovateUK@antares.ventures

pilots, enterprise partnerships, and regulatory navigation. We also support talent acquisition, governance, and follow-on fundraising, ensuring a clear pathway to scaling in Asia.

Our Investment Approach

We invest USD 2–5 million in globally sourced startups with IP-rich, category-defining technologies that address sustainability and industrial efficiency. A 50% follow-on reserve ensures long-term support.

If you are building transformative deep tech and looking to scale in Southeast Asia, we would love to connect.



We are equity investors currently with two funds under management, The Finance Yorkshire Seedcorn Fund and The Finance Yorkshire Growth Fund. The Finance Yorkshire Seedcorn Fund invests in early stage startup companies which are located in the Yorkshire and the Humber region.

This Fund is sector-agnostic and can invest up to £1.5m in businesses which are looking to scale and grow from the commercialisation of existing intellectual property. The Finance Yorkshire Growth Fund invests in profitable companies which are located in the Yorkshire and the Humber region. We aim to support businesses as they transition to their next phase of growth and ownership and seek to invest up to £1.5m into a variety of transactions including MBOs, replacement capital and development capital.

Anticus Partners

anticuspartners.com

Contact:

info@anticuspartners.com

We seek to empower Yorkshire's talented and ambitious entrepreneurs to climb new global heights for a brighter future. Our team has deep-rooted connections to the region, with extensive knowledge of the local business community. Anticus Partners seeks to make a difference to the people and environment in which we operate.



Antler is the world's day zero investor that inspires, enables, and invests in visionary founders everywhere. Founded on the belief that talent is everywhere but opportunity is not, we remove the barriers to entrepreneurship so more people can launch sustainable businesses that solve meaningful problems, drive innovation, and improve lives.

We partner with the most early-stage entrepreneurs around the world through our residencies in 27 cities across six continents—Austin, Berlin, Bangalore, Jakarta, London, New York, Singapore, Stockholm, Sydney, and beyond. As an extension of our founders' team, our global community backs them from the beginning and keeps backing them with team formation, deep business model validation, initial capital, global scaling, and follow-on funding, with a personal passion that goes beyond traditional investing.

At Antler, we know that a unique team is at the heart of every startup's success. Our core activity is to bring together exceptional founders across the world, helping them find a cofounder(s) and getting their venture off the ground. In these instances we work alongside the teams for up to 12 weeks, then partner and invest in exceptional teams executing strongly towards a large opportunity. Antler invests at the earliest stage of a venture's life cycle. While most of our investments will be made in teams that form through Antler's cohorts,



Antler

antler.co

Apply:

antler.co/apply

we will also invest in existing ventures with established founder teams that seek funding from Antler.

Antler provides significant value to its investees through exclusive access to a community of over 2,800 founders and the Antler team. We've built a vast talent network of 5000+ vetted candidates to help strengthen portfolio teams. With our global network of 450+ industry leaders, founders receive personalised feedback and guidance, supported by 600+ operators and advisors from 34 countries who host over 2,000 mentoring sessions annually. Additionally, we leverage connections with top-tier VCs to advise on fundraising strategies, offer discounts on essential services to extend runway, and provide best practices to help startups reach the next level. Lastly, our portfolio companies get access to perks which amount to ~£80k per company in value.



Apollo is a transatlantic venture capital firm specialized in developing and investing in data-driven biotechnology and health tech ventures.

We invest in game-changing companies at the seed or early stage and build transformative healthcare companies targeting age-related diseases and aging itself. We believe that we can generate significant value by actively co-founding ventures which is a core pillar next to investing in best-in-class companies from our outside dealflow. We do this by partnering with and enabling leading scientists, research institutes, as well as universities to build and invest in transformative healthcare companies. We identify leading companies at an early stage - based on breakthrough science and led by inspiring teams. We typically invest in companies in preclinical and early clinical stages, mostly participating in Seed through SeriesB financing rounds, ideally as lead or co-lead. Our team consists of serial entrepreneurs, seasoned biotech investors and scientists across Europe and the US - all with remarkable track records and extensive networks.

Apollo Health Ventures

apollo.vc

Contact:

dealflow@apollo.vc

We actively support our portfolio companies by providing valuable guidance on R&D plans, indication selection strategies, as well extensive operational support where needed. Importantly, we also commit significant resources to recruit key talent for our portfolio companies and to raise follow-on funding.



Archangels is a prominent business angel syndicate, which has been at the forefront of early stage investing in Scotland for over 30 years. We provide our members with carefully-curated opportunities to invest in the most innovative companies and to support their early stage development to fullest potential.

We typically invest as lead investor in businesses which are located and registered in Scotland. Archangels welcomes funding submissions from start-ups and early stage companies in the technology and life sciences sectors.

Our Criteria is:

- 1.** MUST be both operationally based and registered in Scotland, UK.
- 2.** The investment opportunity can cover a range from 'proof of concept' through expansion capital, including start-up, early stage or series A but must have high growth potential, including international sales potential.
- 3.** Should have Intellectual Property (IP): defensible, disruptive technology and / or know-how, difficult to replicate.
- 4.** Must be in a sector which qualifies under the Enterprise Investment Scheme.
- 5.** Must be a technology or life science business with a B2B business model.
- 6.** Seeking initial funding of £250k to £2m.

Archangels

archangelsonline.com

Contact:

investment@archangelsonline.com

Archangels offers the benefit of occupying an area of the funding market which straddles traditional business angel funding and moves into the area occupied traditionally by venture capital. Portfolio companies receive the benefit of having access to the wide Archangels network including our members and the other portfolio companies. The business angel approach allows for greater alignment with our portfolio companies. Archangels also takes a patient capital approach, understanding that building a successful technology business from scratch takes time.



ASCENSION

Ascension is an early-stage venture capital firm built and managed by exited operators and entrepreneurs to back the next generation of tech and impact founders. Since 2015, Ascension has invested in 150+ start-ups across its (S)EIS & Institutional funds – our specialist approach and extensive sector reach allow us to identify and scale pioneering tech enterprises.

With over £83m under management, Ascension was crowned Seed VC of the Year in 2022 by the UK Business Angels Association and is the most active investor in the UK in the past decade (Beauhurst). Ascension has a particular focus on backing impact businesses leveraging the power of technology to solve some of the world's biggest problems. For more information, see ascension.vc.

- The core Ascension team (now 15 individuals) and shareholders are exited tech entrepreneurs and successful investors in their own right
- 12 recent exits and approx 70+ Ascension investments valued at approx 200%
- 4 Ascension maturing funds have passed, or closed in on, 300% value: SEIS '15, SEIS '16, EIS '17, SEIS '19
- Hosted in the offices of O2 Telefonica's global accelerator, Wayra
- Team has spent majority of their careers investing in and managing technology businesses
- Ascension VPs (17 shareholders + 2 shareholder directors) each own a stake in the business and have multiple \$100m+ and \$1bn+ exits from their own businesses and angel investments
- 30+ Mentors bring their expertise in building businesses, ranging from start-ups to global companies operating in the Funds' sectors.

Ascension Ventures Ltd

ascension.vc/

Contact:

toyosi@ascension.vc

Ascension has adopted an investment approach that focuses on three key elements of any potential business: the quality of the team, the robustness of the technology vs. competition and market size/potential of the product. Analysis is then conducted to discern whether there is a clear route to market for the distribution of the product and to decide where Ascension can add value.

Why we add value:

- We have been investing since 2015 - investing in over 150+ companies, 12 exits, 70+ businesses trading at approx 2x and only a few failures - so have built strong co-invest / follow on relationships with key angels / funds across the UK
- We have a diverse team / venture partner network / mentors all with the sole focus to help investee companies scale
- We have sector specific funds with more focus, e.g. the Life Fund which has an extensive advisor network which is both scientific and commercial and the Conduit.



ASTANOR

Where tech meets nature

Astanor Ventures is a global B Corp certified impact venture capital investor that backs ambitious entrepreneurs with disruptive, scalable solutions that will create systemic change across the agrifood value chain, from soil to gut.

With a demonstrated commitment to sustainability and impactful investments, Astanor Ventures identifies and nurtures early-stage companies that harness technology to drive positive change. With a keen focus on climate transition, nature positivity, resource efficiency, and social and health enhancements, Astanor Ventures is at the forefront of fostering a regenerative and sustainable bioeconomy.

Astanor

astanor.com

Contact:

entrepreneurs@astanor.com

Astanor's team of experts do not only provide management and business advises, they support the portfolio companies all along their sustainable journey and help them measuring their impact creation.



Atlas Ventures is an industrial tech investor focused on industrial AI, robotic automation and decarbonisation for legacy sectors (e.g. applications in energy, manufacturing, transportation, supply chain & logistics, heavy industries).

Based in London, we invest in Seed to Series A stages across developed European markets, with a strong focus on the UK. Typically, we invest in B2B solutions both in software as well as hardware.

Atlas Ventures' value-add primarily stems from its deep networks in the industrial manufacturing and decarbonisation space, and senior-level access to a wide range of corporates or senior executives. We aim to expedite our portfolio companies' commercialisation efforts to achieve their Series A metrics by qualified introductions to C-level executives and Shareholder / BoD level contacts at blue chip corporates. Furthermore, Atlas Ventures' investor base, which

Atlas Ventures

atlasven.com

Contact:

duran@atlasven.com

often has industrial links, adds another set of networks to explore pilot/POC applications or to discuss commercialisation of portfolio companies' products.

The two GPs (with extensive experience in investment banking, management consultancy, corporate VCs) provide hands-on support to portfolio companies in fundraising and corporate finance matters and Sales/Pricing/GTM strategies.



Baltic Ventures is a tech accelerator on a mission to support game-changing founding teams who are building the solutions and businesses of tomorrow. From our hyper-local base in Liverpool's Baltic Triangle we accelerate early-stage digital tech businesses with global ambition.

Baltic Ventures Accelerator is for founding teams with a digital MVP and early traction and offers a 4-month cohort programme, including £30k of equity investment from our angel syndicate, in-person weekly workshops, VC investor meetings, and mentorship.

Baltic Ventures Accelerator is for you if:

- You are a digital tech business with an MVP and are considering raising seed investment over the next 6-12 months and want to significantly raise your profile with investors
- You want to upskill as a founder and avoid the common startup pitfalls, on an intensive market leading programme lead by a top tier team who have been there and done it
- You want to refine your product and to further your product market fit, understand your customers better, and prepare for scalable growth



Baltic Ventures

balticventures.uk

Contact:

hello@balticventures.uk

- You want to set yourself up to attract and retain the best talent as you grow and scale your business
- You are committed to building a business that makes a positive impact and is adaptable, sustainable and resilient in the face of changing times.

Our Accelerator programmes open for investment applications annually each Spring. Please note that we do not currently invest outside of our Accelerator Programme.



Barclays Climate Ventures portfolio (formerly known as Sustainable Impact Capital) has a mandate to invest up to £500m of equity capital in climate-tech start-ups by the end of 2027, helping to accelerate the transition towards a low-carbon economy.

We firmly believe that innovation is key to tackling climate change and we are committed to supporting transformative change by investing our own capital in entrepreneurial companies.

Through this portfolio, we aim to fill growth stage funding gaps to help accelerate and scale catalytic and strategic solutions to environmental challenges, with an enhanced focus on decarbonisation technologies that are enabling transition within carbon intensive sectors, particularly where Barclays has meaningful client exposure – such as Buildings,

Barclays Climate Ventures

home.barclays/our-sustainability-/barclays-climate-strategy/barclays-climate-ventures/

Contact:

bcvscreening@barclays.com

Energy, Transport, Agriculture and Industry – including solutions delivering carbon capture, carbon dioxide removal and green hydrogen.

We are looking for opportunities from Series A stage onwards who can evidence proven product-market-fit and are ready to scale commercially.

Submit your deck, including size of raise and stage to: bcvscreening@barclays.com



BERINGEA

Beringea is a transatlantic venture capital investor that seeks to create lasting success for rapidly scaling entrepreneurial companies. We provide patient and intelligent capital and a global footprint to back entrepreneurs throughout their journey.

We'll typically make an initial investment between £1-10 million into companies turning over approximately £1 million or more. We tend to lead Series A or Series B rounds, with further funding available for follow-on investments.

We typically look for:

- Experienced entrepreneurs - Serial founders, industry leaders, or academic experts with a clear vision for the company's future
- Solid foundations - Proven commercial traction with a defensible market position and capital use plan to fuel growth
- Growth potential - A growing business with a substantial addressable market, a compelling product or service, and a competitive edge
- Capital efficiency - A focus on financial and operational metrics with a clear route to profitability following our investment.

Beringea

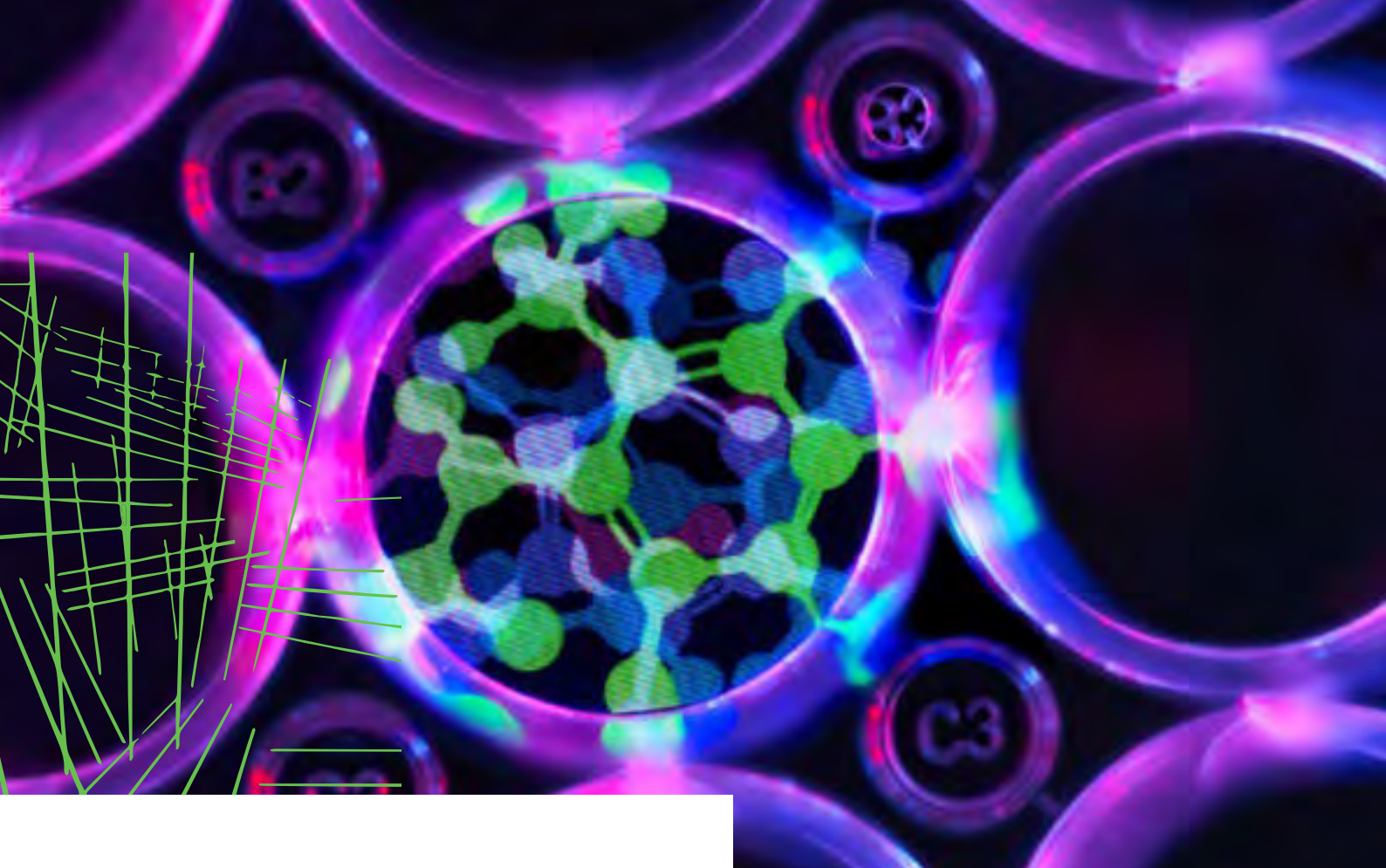
beringea.co.uk

Contact:

info@beringea.co.uk

How we add value:

- Beringea Scale-Up Academy - Our series of virtual and in-person events offer the leadership teams of our global portfolio of companies networking opportunities and training to overcome barriers to scale
- Supporting transatlantic growth - We use our network of advisers, provide on-the-ground support and share knowledge across our portfolio to help companies expand across the Atlantic
- Building leadership teams - We know talent drives success, so we work closely with founders and a robust network of recruitment specialists to build exceptional teams
- Providing strategic connections - From entrepreneur advisory panels to prospective client introductions, our portfolio companies can leverage our professional network to expand their reach and gain from new perspectives.



Black Seed is a community led by Black founders, for Black founders. Rooted in Brixton, with global ambition. We invest in pre-seed companies aimed exclusively at Black founders across the UK that will shape the Future Economy. Our core focus areas are:

- Fintech - financial services, insurtech, blockchain
- Smart Enterprise - software, automation, mobility
- Mobility & Transportation - net zero, electrification and autonomous software
- Marketplace - e-commerce and media
- DeepTech - space, open security, robotics, compute platforms, AI
- Healthcare - next-generation therapeutics, computational genomics, healthcare IT / infrastructure, digital health.

Black Seed Ventures

blackseedvc.co.uk

Contact:

blackseedvc.co.uk/contact

We support companies from seed, with the aim of setting up Black-led businesses for long-term success, providing our portfolio companies a six month fully bespoke operating programme that includes operational support in: tech and data science, product and UX/UI design, growth, brand, PR & comms, talent etc alongside mentoring.

Our venture studio will provide a 6 month bespoke wrap around component for our cohort providing access to our "Friends of Black Seed" network, online courses, free events & seminars and daily support and access to the Black Seed team.



BLACKFINCH VENTURES

At Blackfinch Ventures, we are dedicated to fuelling innovation by supporting young, high-growth firms with the potential to deliver long-term value. Investors can choose from our generalist or thematic EIS portfolios, or the Blackfinch Spring VCT -- each is designed to target disruptive opportunities in different growth stages and sectors. Supported by the wider resources of the Blackfinch Group (an investment specialist entrusted with over £850 million in assets under management and administration) and their 30 years investment experience, we bring a robust offering to both our clients and investee companies.

Our generalist portfolio, the Blackfinch Ventures EIS Portfolios, focuses on disruptive technology businesses offering products and services that address real-world problems. These businesses cover a variety of industries and are selected for their potential to create meaningful impact through innovation.

Our new thematic portfolio, the Energy Transition EIS Portfolios, is supported by the Blackfinch Energy Transition team. This focuses on climate technology, particularly on firms developing innovative solutions to support the decarbonisation of the UK economy needed for buildings, transport, and infrastructure.

Blackfinch Ventures

blackfinch.ventures

Contact:

Innovate@blackfinch.com

The Blackfinch Spring VCT complements our EIS portfolios to provide scale-up funding. The VCT prioritises companies at a more advanced stage of development, helping to scale existing revenues and delivering significant growth.

At Blackfinch Ventures, we are focused on high-quality deal flow. Our Ventures Team leverages an extensive network, cutting edge research platform and strong referral pipeline. We conduct extensive due diligence and take input from qualified external individuals to ensure we rigorously vet any potential opportunities.

Our team, led by Dr Reuben Wilcock, is composed of highly accomplished professionals from a diverse range of backgrounds. This includes award-winning founders of successful tech start-ups, as well as technology specialists with deep knowledge of the sector. This combination of entrepreneurial experience and technical insight enables our team to effectively identify, nurture, and scale promising companies. Blackfinch Ventures will continue to build on its investment prowess, focusing on innovation, disruptive businesses and transforming industries.



Bloc Ventures is an early-stage venture capital investment company, focused on deep tech companies in the UK and Europe. We invest in companies tackling complex, science-based challenges, between Seed and Series A. Our team is made up of engineers and former enterprise leaders from Arm and Vodafone, who have built global deep tech companies, collectively have made £500m+ of deep tech investments and achieved £5bn+ of exits.

Bloc's background informs our investment focus and so typically, we focus on telecommunications and computing. We categorise their offerings across cloud, connectivity, data science and security. We produce in-house research on the future, culminating in a 'live' roadmap to mass adoption of particular technologies and determining where we should invest capital. Bloc's portfolio is a mix of companies pushing the boundaries in areas such as AI, channel coding, quantum security and supercomputing.

While at Arm and Vodafone, our leadership team built relationships with the most innovative companies in the world through both commercial and financial transactions. The two co-founders led the respective venture capital units at those two firms, with deep

experience prior to that in the industry. This allowed us to build a benevolent environment for our portfolio to engage with in both the telecoms and computing industries across the world. We have real world enterprise and startup experience, which we use to support entrepreneurs on anything from hiring, go to market strategy and global expansion.

Bloc's approach has been developed over decades in engineering, investment, and M&A. This gives us unrivalled insight into technology and a unique approach to managing investments. To date, Bloc has made 13 investments and achieved 2 market-leading exits.

Bloc Ventures

blocventures.com

Companies can pitch directly to the Bloc investment team here:

blocventures.com/pitching



Blue Lake VC

At Blue Lake VC, we invest in immigrant founders in the UK building world-class products. As immigrants ourselves, we understand both the opportunity and resilience that international founders bring, as well as the challenges they face.

Investment Criteria

- Valuations under £10M
- International founders
- Seed/Pre-Seed
- B2B
- Software
- Global ambitions

Blue Lake VC

bluelakevc.com

Apply:
[Startup Application](#)

Value to Investee SMEs

We offer support to help prepare you for subsequent funding rounds. One of the most important challenges that international founders face is a lack of network and social capital. We aim to help with this.

As part of our portfolio, you will have the opportunity to join Oasis, our physical community space in central London, connecting you with fellow founders, investors, support partners, and events.



Blue Ledge Capital is a forward-thinking investment firm that collaborates with early-stage companies driving innovation in biotechnology, sustainable food production, and health technologies. By focusing on early-stage and growth investments, Blue Ledge Capital is committed to supporting visionary companies that tackle global challenges and offer transformative solutions.

What sets Blue Ledge Capital apart is its network-driven investment approach, which extends beyond financial backing. The firm connects entrepreneurs with a rich ecosystem of resources, mentors, and strategic advisors globally. We place a strong emphasis on forming long-term partnerships with businesses, fostering a collaborative environment and follow on funding where applicable.

The firm's investment philosophy is reflected in its diverse portfolio of innovative companies. For example, Blue Ledge Capital has played a pivotal role in the growth of Qnovia, Inc., from their very first capital raise through leading their last four rounds of investment including over \$30 million from BlueLedge and its partners. Qnovia is currently working with the MHRA to submit their revolutionary device drug combination for authorization in the UK.

Another notable investment includes Mission Barns, a company scaling cultivated fat technology to transform sustainable food production, which secured \$24 million in Series A funding with Blue Ledge Capital's involvement as the largest investor in that round.

Blue Ledge Capital is deeply committed to sustainability and addressing critical global needs. The firm seeks out businesses that not only drive innovation but also align with ethical, environmental,



Blue Ledge Capital
blueledgecap.com

and social priorities. This focus positions the firm as a trusted partner for SMEs with bold visions and a strong sense of purpose.

By fostering relationships with founders, Blue Ledge Capital ensures that its investments create meaningful and measurable impact. The firm's team leverages its expertise in emerging industries to guide companies through complex challenges and help them seize new market opportunities. This hands-on approach ensures that each partnership is rooted in shared goals and mutual growth.

Companies working with Blue Ledge Capital benefit from a partnership with a firm that is passionate about innovation, focused on sustainability, and dedicated to empowering businesses to achieve their full potential. Blue Ledge Capital's unique combination of financial expertise, strategic insight, and collaborative engagement makes it an ideal partner for companies seeking to redefine their industries and make a lasting impact.



Boundary Capital Partners LLP is an impact, for-profit, B2B technology investor. We are regulated by the FCA as a venture capital investor. Typically we invest early stage to Series A up to £500k per investment round (we can follow our money).

We have invested in life sciences, medical devices, materials, engineering and software all within our Impact Life Fund where we have a proprietary impact methodology ("Equivalent Lives Impacted" or "ELI") that transcends any technology type to validate the positive impact on humanity. This aligns very strongly with Innovate UK's Plan for Action.

We have also launched the Boundary Net Zero Technology Fund which sets out to invest in disruptive technologies addressing decarbonisation, directly or indirectly. We have invested and co-invested with Innovate UK several times as a fund and within our investee companies.

We are made up of experienced entrepreneurs and investors, and we have a wealth of expertise and



Boundary Capital Partners LLP

boundarycapital.com

Contact:

Dan Somers

dan@boundarycapital.com

connectivity to bring as required in terms of business development, product development, technology R&D and strategy to finding partners and exiting.

We are always happy to speak to businesses at any stage in their investment cycle, try to help and align towards investment where there's a fit.



Investment Criteria – The BDF invests in purpose led, IP-backed hardware innovations that are compliant with the EIS and SEIS schemes:

- A defined pragmatic business plan with sales, profit and loss, and cash flow forecasts
- A well designed product that solves a clearly defined problem
- A working prototype and indication of interest from key target client(s)
- Defensible IP
- Revenue flow or a qualified sales pipeline
- Winning chemistry within the founding team
- Deep understanding of the relevant marketplace and a clear competitive difference
- The company must be SEIS or EIS eligible

About the fund:

The British Design Fund is unique in supporting, mentoring and investing in exclusively well-designed purpose-led product businesses.

Supporting enterprise and innovation in the UK, the Fund works with extraordinary entrepreneurs to scale their products, accelerate growth and build long term value – both for investors and business owners.

The Fund has been in operation for over six years and has built a rich and diverse portfolio of enterprising start-ups which represent the cream of British invention.

British Design Fund

britishdesignfund.co.uk

Contact:

enquiries@britishdesignfund.co.uk

Alongside the commercial investment into enterprises, the mentoring and support we offer is seen as invaluable. A range of mentors, who give their time and expertise generously, provide an unparalleled resource from which our investee companies can draw.

Managed by Sapphire Capital Partners LLP and supported by BDF Advisors Ltd ensures the Fund has access to the right sort of sector specific expertise which is exactly what our research has shown that start-ups need.

The Founders and Directors at the British Design Fund have been entrepreneurs and business owners in their own right, they have extensive experience of launching products and brands into market and understand first-hand the challenges which start-ups face.

Every business that the British Design Fund supports is purpose-led. All of the businesses within the British Design Fund portfolio are addressing important issues in their respective markets, satisfying un-met and clearly defined needs.

For applications, please complete the form found on our website at britishdesignfund.co.uk/apply/



CAMBRIDGE ANGELS

Members invest in and mentor high quality start-up and early-stage companies in Cambridge, London, Oxford and throughout the UK.

We are a collaborative Cambridge-based group, actively mentoring and investing in innovative teams and their ideas. We equip generations of entrepreneurs to generate returns and help realise their full potential. We have a strong ethos of backing merit and supporting entrepreneurship.

Our members, most of whom are successful entrepreneurs, invest in a wide range of start-up and scale-up businesses with a particular focus on science and engineering-based tech, and tools and technologies supporting healthcare. Typical funding requirements that Cambridge Angels meet are in the range of £150,000 to £1.5 million – although it is worth noting that several of our portfolio companies have raised significant follow-on funding from our members and our venture capital partners over several funding rounds.

Cambridge Angels

cambridgeangels.com

Contact:

info@cambridgeangels.net

Our members have been responsible for a large number of the “Cambridge Phenomenon” success stories over recent years. Therefore, in addition to providing funding for early-stage companies, Cambridge Angels also offer start-ups the considerable benefit of a wide range of expertise, contacts and directly relevant experience in establishing and growing entrepreneurial businesses successfully.

Through our members and their networks, our entrepreneurs are better connected.



UNIVERSITY OF CAMBRIDGE enterprise

Cambridge Enterprise Seed Funds has managed investments made by the University of Cambridge Venture Fund into new technology companies since 1995. Investing ringfenced capital from the University of Cambridge balance sheet, the fund is an evergreen impact investor.

Cambridge Enterprise Seed Funds, the fund manager, has considerable experience in growing and establishing successful business. Over 150 companies have been invested in across a wide range of sectors to date.

Investments connect strongly to the University of Cambridge through either:

- A deep technology or research connection to the University of Cambridge
- A founding team including staff, students or recent alumni of the University of Cambridge.

Cambridge Enterprise

enterprise.cam.ac.uk

Contact:

innovateuk@enterprise.cam.ac.uk

The University of Cambridge invests in breakthrough technology companies from across the sciences by providing £50-500K investment as part of a syndicated round at pre-seed, seed and series A.



Cambridge Future Tech (CFT) is a tech-first investor dedicated to fostering the growth and success of early-stage DeepTech ventures. Focused on bridging the gap between academic research and market application, CFT accelerates the transfer of cutting-edge technologies from lab to market.

Investment Criteria:

CFT's investment strategy is sector-agnostic within the DeepTech domain (excluding therapeutics), focusing on IP rich digital and physical sciences ventures with the potential for global impact. We typically invest with first-cheque at pre-seed with the option to follow on to Series A. Our portfolio includes semiconductors, AI, sustainable technologies, quantum, future of computing, and food security and more.

Types of Companies:

We invest in early-stage DeepTech ventures that have high growth potential and significant societal impact. Our current portfolio includes companies engaged in semiconductors, artificial intelligence, sustainable technologies, and other high-impact areas. We seek out innovators from diverse backgrounds, with 58% of our founders coming from traditionally underrepresented groups.

Cambridge Future Tech

CamFutureTech.com

Contact:

[InvestorPartnerships@
CamFutureTech.com](mailto:InvestorPartnerships@CamFutureTech.com)

Value Add for Founders:

CFT offers more than just capital. We provide extensive operational support, ensuring high engagement with our portfolio companies. Our dedicated Venture Operations team, led by COO, Xavier Parkhouse-Parker, assists in all aspects of company building, including commercial strategy, product development, financial modeling and team construction. We also connect founders with FTSE 100 companies and Global companies facilitating pilot projects, strategic partnerships, and commercialisation opportunities.

Our team brings a wealth of experience in technology and investment. CFT has a network of 100+ mentors advisors, and experts. CFT supports building early teams with a talent pool at over 300 candidates with backgrounds in everything from specialised AI engineers to experienced sales executives.



Cambridge Innovation Capital (CIC) is a leading venture capital investor backing and building category-leading deep tech and life sciences companies.

Our focus on the Cambridge ecosystem and privileged relationship with the University of Cambridge provide us with unparalleled access to emerging opportunities in one of Europe's leading innovation hubs.

We have raised in excess of £500 million from a geographically diverse range of institutional and strategic investors and have invested in 40 companies, whose innovations are set to transform the lives of many. Our commercial objective of creating value is central to our business, but our motivation is broader: we are driven by a desire to use our expertise to support companies and the wider innovation ecosystem to impact society positively.

We predominantly invest in early-stage companies (with potential for follow on in growth rounds) that are based in or close to the Cambridge ecosystem or with links to it, or businesses based on University of Cambridge IP, wherever they are located. Potential investee companies need to offer world-class IP, visionary entrepreneurs, be potential category leaders, an established growth pattern and scalability, a clear path to commercialisation and a robust plan for use of funds.

CIC adds value to its portfolio companies through multiple aspects. Firstly, we leverage the operating experience, sector expertise and global network of our team to support portfolio companies in overcoming challenges and capitalising on opportunities. This may involve defining a company's overall strategy, attracting co-investors, addressing management team issues, supporting customer identification and traction, and increasing operational efficiencies. Secondly, we utilise the network and expertise of our board and Advisory



Cambridge Innovation Capital

cic.vc

Contact:

enquiries@cic.vc

Panel, which consist of world-leading academics, industry leaders and successful entrepreneurs; portfolio companies can use our board and Advisory Panel to seek advice and access various networks. Lastly, CIC hosts educational seminars on relevant topics, such as ESG workshops and company creation, and collaborates with professional services firms to further the knowledge of management teams in areas such as US expansion, global market insights or board best practices.

Our focus areas for investment revolve around four themes: future of compute (artificial intelligence, semiconductors, quantum computing), MedTech (robotics, genomics, diagnostics and devices) and Therapeutics (small and large molecules, advanced therapies, digital therapeutics).



Cancer Research Horizons (CRH, trading name for Cancer Research Technology Limited) is a specialist drug discovery, development and commercialisation company wholly owned by Cancer Research UK (CRUK, the world's leading cancer charity) that fast tracks scientific breakthroughs for patient benefit.

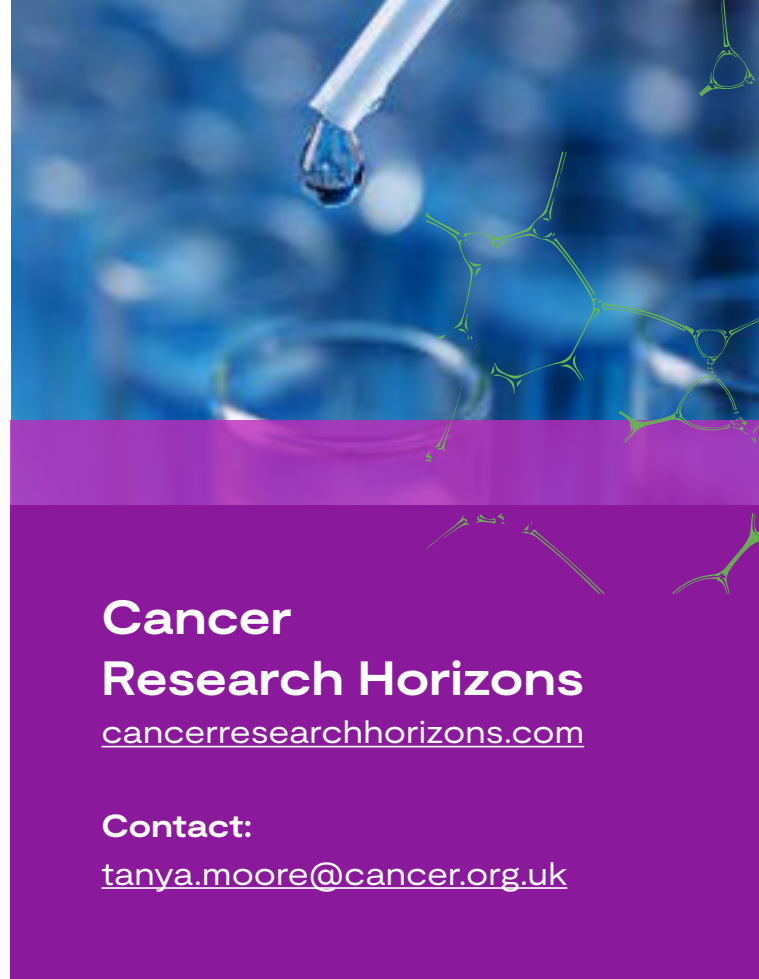
Our CRH Seed Fund (launched June 2022) builds on over 25 years of CRH establishing and growing successful companies (approx 60 companies formed and 21 exits to date). Our fund brings innovative cancer ideas together with early stage capital, commercial advice, support with intellectual property, access to experts, mentors and management teams, and introductions to co-investors to maximise the chances of start-ups becoming financially attractive to investors and benefiting cancer patients. We specialise in high tech ideas.

Our aim is to grow the CRH Seed Fund to £30m, and it is currently backed by a commitment of £15.5m from CRUK.

Our CRH Seed Fund Investment Strategy:

Our CRH Seed Fund is an impact-driven, evergreen, venture philanthropy fund investing in promising early-stage opportunities worldwide. We take a long-term view, so we can take risks where others cannot. We can invest alone or alongside other like-minded investors.

Any financial returns we generate are reinvested back into the fund and into cancer research. Investment decisions are made based on the potential to reach a value inflection point that will leverage and attract high quality follow-on capital that will increase the chances of life-saving cancer treatments, diagnostics and devices reaching the market.



**Cancer
Research Horizons**
cancerresearchhorizons.com

Contact:
tanya.moore@cancer.org.uk

You do not need to be (or have been) a CRUK-funded researcher to secure capital from our fund. We are interested in all ideas that could benefit new cancer patients and fulfil our investment criteria, including new therapeutics, preventative measures, diagnostics, medical devices and AI/data driven solutions.

Funding available is:

- Early-stage validation capital and Pre-Seed capital: up to £150k
- Seed capital: typically £100-500k, with the ability to invest up to £1m on occasion
- Follow-on capital for our seed invested portfolio companies: typically £100-500k, with the ability to invest up to £1m on occasion.

Our seed fund, venture build and portfolio investments benefit from the support of our dedicated seed fund team and wider commercial partnerships team with long-standing track record of sourcing, evaluating and completing spinout and partnering deals. Our seed fund team works alongside an independent investment committee comprising a diverse group of investors, venture builders and experts in science, knowledge transfer and industry.



Carbon13 builds and backs ventures addressing Earth's critical life support systems. Through our programmes the Venture Builder and the Venture Launchpad, we focus on supporting founders right at the beginning of their journey. Since 2021, we have invested over £8 million into pre-seed ventures who now have a collective potential to reduce emissions by 500 million tonnes per year once at scale, and a current market value of over £190 million.

We work with founders of both software and deeptech/science based ventures, across every sector of our economy, from hydrogen to insurance. Our Cambridge origins have taught us the importance of commercial, carbon and scientific understanding. Our expansion to Berlin fuels our ecosystem of expertise and investors.

Carbon13

carbonthirteen.com

Contact:

InnovateUK@Carbonthirteen.com

We believe that entrepreneurs will change the trajectory of the climate emergency. Our community is rooted in our mission to fight the climate emergency, and driven by our scalability ethos. This is where climate tech startups will succeed on a global scale.



Catapult Ventures is an independent venture capital fund manager, investing in UK businesses since 2002. We have managed a number of discrete venture capital funds on behalf of a range of public and private sector investors, including the GM & Cheshire Life Sciences Fund, which has invested in over forty life science businesses since launch.

Catapult Ventures is not currently investing in new companies, but we continue to invest in our portfolio companies and help to build value and growth. Catapult Ventures is all about value creation through long term relationships - both with our portfolio companies and those who have invested in the funds we manage. We have a passion for business and enjoy supporting ambitious entrepreneurs and management teams who share this enthusiasm.

Catapult Venture Managers Ltd

catapult-ventures.com

Contact:

mail@catapult-ventures.com

Catapult Ventures is a trading name of Catapult Ultimate Holdings Ltd, which is the ultimate holding company of Catapult Venture Managers Ltd, which is authorised and regulated by the Financial Conduct Authority (FCA Registration No. 191949).



Chrysalix is a global venture capital firm that specialises in transformational industrial innovation. Our new fund, the Chrysalix Carbon Neutrality Fund, supports carbon neutral targets of hard to abate industries and invests in solutions like alternative fuels, materials substitution, carbon as a resource, carbon removal, utilisation and carbon markets make initial investments primarily at the early stage (pre-seed to Series A) and typically lead financings.

With a very active approach to supporting entrepreneurs to better outcomes, Chrysalix has deep experience building startups in cleantech and climate since 2001 and recently also emphasized digital intelligent solutions for industrial applications.

Our strategy is to build a strong ecosystem around us including blue chip industrials. Our past and current

Chrysalix Venture Capital

chrysalix.com

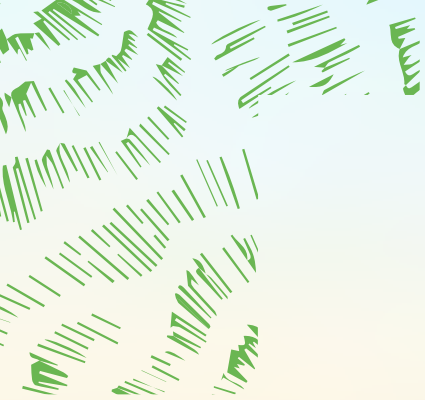
UK and European Contacts:

Fred van Beuningen
fbeuningen@chrysalix.com

Charlie Haythornthwaite
charlesh@chrysalix.com

strategic investors include Shell, Total, EDF, BASF, Mitsubishi, Hitachi, Hyundai, Caterpillar, Petronas, Teck Resources and South32.

With offices on both sides of the Atlantic, we are well-connected to leading North American and European climate investors (both financials and CVCs) to create syndicates for follow on financings.



Cibus Capital LLP advises the Cibus funds which are global food and agriculture private equity and venture capital funds.

Set up in 2016, Cibus Capital has over USD 1bn under advisement to date, deployed across a portfolio of investments operating throughout the food supply chain in both mid-market and venture capital. We partner with companies driving sustainability and resource efficiency across the food value chain and help to grow companies leading the sustainable food revolution.

Cibus Capital

cibusfund.com

Contact:

[tarquin.stephenson@](mailto:tarquin.stephenson@cibuscap.com)

cibuscap.com



CLARENDON FUND MANAGERS

Clarendon Fund Managers manage Co-Fund NI, a £50m fund making equity investments in the Northern Ireland region. Co-Fund NI co-invests alongside private investors such as venture capital firms, business angels and corporate investors into high-growth potential opportunities.

Typical investment sectors include life sciences, medtech, enterprise software and net-zero & sustainable technologies. Co-Fund NI can make investments between £100,000 to £500,000 as part of investment rounds between £250,000 up to £3m.

Each investee company has access to a Clarendon investment professional who can guide management on the venture growth journey. Clarendon's partnerships with cloud hosting providers reduce costs and

Clarendon Fund Managers Ltd

clarendon-fm.co.uk

Contact:

c.trotter@clarendon-fm.co.uk

maximise technology capability across its portfolio. Clarendon is also able to leverage its extensive network of entrepreneurs and investors to locate experienced advisors to assist with specific challenges.



Clay Capital

We are committed to supporting Seed to Series B stage businesses that create scalable, mass-market solutions with global applicability. As a venture capital firm specialising solely in Agri-Food Tech, our in-depth understanding of the industry uniquely positions us to assist our portfolio companies.

With an Asian foundation and a strong emphasis on European markets, we provide a distinctive value proposition by bridging the gap between Europe and Asia. This strategic advantage enables us to support our portfolio companies if they plan to expand into the Asian market. Clay Capital is well-equipped to leverage its extensive network of industry experts, academics, and government contacts, to accelerate the business development of our portfolio companies. This value proposition is particularly relevant for companies operating in the food and agricultural industries,

Clay Capital

claycapital.vc

Contact:

hello@claycapital.vc

as Singapore is known as a global FoodTech hub, renowned for its unparalleled scientific innovation and supportive regulations.

Our deep-sector expertise allows us to help our portfolio companies establish a defensible edge, crafting business models that effectively create and capture value in the industry. Should you wish to contact us, our details are listed below. We would love to hear about your venture!



Clean Growth Fund is a £101m venture capital fund investing in and supporting companies that are actively contributing to reducing greenhouse gas emissions or improving resource efficiency. CGF will invest across the technology spectrum, including hardware, software, process systems, materials, deep tech and business model innovations capable of driving real and rapid change on a global scale.

CGF's core focus is companies with outstanding management teams which have a pilot or alpha prototype that successfully demonstrates the technical feasibility of their product or service alongside compelling evidence of market engagement.

Typical first round investments are in the region of £0.5-3m and CGF actively participates in follow-on rounds so the overall investment in a company can be much higher.

Clean Growth Fund

cleangrowthfund.com

Contact:

info@cleangrowthfund.com



COMMITTED CAPITAL

Committed Capital is a specialist in early-stage growth venture capital and has been investing for more than two decades in the UK's most promising high growth technology companies.

Our investee companies typically have excellent technical solutions to pressing issues in a substantial addressable market and our mission is to support these companies through applying and sharing the expertise our team has of founding, building, internationalising, and exiting companies.

In terms of our investment criteria, we are a generalist technology investor investing in UK-based companies, in accelerating growth phase and that are already reliably generating over £1m in revenue, and we typically have a preference for B2B over B2C and software over hardware.

Our portfolio to-date reflects this and we have invested in companies solving pressing problems at the leading edge of under-digitised sub-sectors as diverse as the Built-Environment, Finance, Education, IT infrastructure, Advertising and Health.

Committed Capital
committedcapital.co.uk

Contact:
info@committedcapital.co.uk

For successful companies, we work with you by committing capital (typically through £1-3m funding amounts, in the first instance) to provide growth funding, and actively supporting you in areas important for the next stage of your growth such as corporate governance, marketing and sales strategies, financial modelling, and making strategic B2B introductions.



Concept Ventures is the UK's largest dedicated pre-seed fund. Through our unique, people-centric investment approach, we back founders at the very start of their journey, often building conviction in teams before anyone else in the market.

We are sector-agnostic software investors, our primary focus is on exceptional people rather than specific industries. We seek founders who are deeply passionate about their domain, possess an unfair advantage in their chosen space, and have a proven track record of building and working together as a team.

Once we invest, we are laser-focused on supporting you during the critical first 12-18 months. Our support includes everything from setting structured KPIs as

Concept Ventures
conceptventures.vc

Contact:
hello@conceptventures.vc

part of our onboarding process to guiding you through your next-round fundraising. To date, we've helped our founders raise over \$150 million in follow-on funding from top-tier investors, including Andreessen Horowitz, Sequoia Capital, and Index Ventures. Several of our portfolio companies have even skipped Seed rounds, advancing directly to Series A following a Concept-led pre-seed round.

Empowering Game-Changing Innovators Worldwide.

Constructor Capital is an early-stage venture capital firm with offices in London, Zurich, Bremen, and Singapore. We specialize in pre-seed, seed, and Series A funding—our typical ticket sizes range from \$1M to \$10M, and through our accelerator, we also offer \$100K investments for promising early concepts in Deep Tech, B2B Software, and EdTech. Our global reach is backed by decades of entrepreneurial expertise and a robust industry network.

Through our \$150M Fund I, we have invested in more than 20 companies, including QuEra, a unicorn neutral-atom quantum computing startup spun out of Harvard and MIT that recently secured strategic backing from Google. Our team was also among the earliest backers of IonQ (ion-trap computing) and ID Quantique (quantum-safe encryption)—both realized significant exits via IPOs and strategic acquisitions. Most recently we have invested in Oxford spin-of Lumai bringing photonic based computing to make running AI models 100x more energy efficient. Another recent investment is in USA company developing human-like AI digital employees.

Our partners have co-founded and led multiple global software ventures (including Acronis, Parallels, and Acumatica), collectively attracting over \$1B in external funding and reaching a combined valuation exceeding \$5B. Their deep operational knowledge spans cybersecurity, cloud, infrastructure software, and large-scale SaaS deployments—an experience base that fuels our hands-on approach to portfolio support.

Beyond quantum technology and software, we are also committed to EdTech, leveraging an extensive ecosystem that includes Germany's largest private university and an all-in-one education platform. By piloting cutting-edge tools and collaborating directly with students, researchers, and educators, we help founders refine innovations for real-world learning environments.

Constructor Capital
constructor.capital

Contact:
valentino.jadrisko@constructor.capital

From Board seats and observer roles to introductions with top-tier investors, Constructor Capital's partners bring strategic guidance at every stage of development. By combining rigorous due diligence and global perspective, we empower startups to innovate swiftly, accelerate growth, and make a meaningful, long-term impact.

The four main differentiators of Constructor Capital are:

1. Huge network of world class scientists, researchers and educators along with a top class network of successful established entrepreneurs and business leaders brings us access to the top startups before they become startups.
2. The same network helps us with a rigorous, deep and effective due diligence process – which maximizes success rate for the fund.
3. Post investment support for the portfolio companies. We're as active investor as the founders would like us to be – pro-actively bringing help in business, technology and financial side of daily and strategic business management.
4. Post-series A stage – Constructor Capital connects portfolio companies with the growth equity, private equity and investment banker community which we know from within for the last 25 years, and which will provide next level of investment and eventual exit for the shareholders.

With a proven record of nurturing world-class companies and a passion for game-changing technologies, Constructor Capital continues to champion visionary founders and drive transformative innovation across the globe.



cornerstone vc

Cornerstone VC is an early stage VC firm focused on a 'people first' investment strategy. We provide pre seed / seed capital to high growth UK tech businesses led by diverse founding teams.

Our typical investment size ranges from £250k to £1m.

We primarily focus on:

- UK headquartered startups
- Led by diverse founding teams
- Pre seed (post MVP) or seed (post traction)
- Tech enabled.

Cornerstone VC

cornerstonevc.co

Contact:

team@cornerstonevc.co



Cottagequinn Enterprises Ltd is the family office investment company whose focus is investing in the future of a sustainable food supply chain, with investment in both early stage and established agri-food and agri-tech companies.

The company is led by Jim Dobson OBE, former Chief Executive and Chairman of Dunbia, one of the largest meat processors across the UK serving markets including major UK and EU retail operators, foodservice and commercial sectors. Establishing Dunbia over 40 years ago, Jim co-founded the company with his brother. During this time Jim's entrepreneurial vision and strategic leadership led the growth and development of the company from a small butchers shop to a highly respected and successful business operation turning over £700m and employing over 4,000 staff. In 2017, the business merged with Dawn UK to become a £1billion turnover company.

The Cottagequinn team has over 100 years combined experience working in agriculture, food production, FMCG and international sales. The team offers a wide spectrum of support and guidance based on the specific needs of the investment target including Sales, Marketing, Operations, Strategy and Finance.

**Cottagequinn
Enterprises Ltd**
cottagequinn.com

Contact:
info@cottagequinn.com

Having engaged the team are now seeking to share their expertise and experience gained over the years in the food supply chain sector and provide both financial and entrepreneurial support to up and coming business throughout all aspects of the agri-supply chain. We believe in creating value added partnerships through financial and intellectual support in forward-thinking, innovative businesses.

We understand the highly specific needs of emerging businesses. We have built our foundations on providing the right resources that enables access to the relevant customer markets and delivers sustainable growth into the future.



counteract

Launched in February 2021, Counteract was the world's first dedicated carbon removal/sequestration venture capital firm. We intend to catalyze 5 GtCO₂e of carbon removal by 2050.

We write first cheques at pre-seed and seed stage of £100k - £1m with the capacity to follow on up to and including Series A and up to £2m in aggregate in any individual company.

Counteract's team has 70+ years as entrepreneurs in diverse sectors (fintech, media, technology, biogas, aluminium recycling), growing businesses from startup to global. We have experience of 50+ deals from every side of the table.

We now turn our experience to helping early stage entrepreneurs succeed in the nascent carbon removal market, which is expected to grow to \$1+ trillion

Counteract

counteract.vc

Contact:

counteract.vc/contact

by 2050. Alongside leveraging our entrepreneurial experience we also act as guides to and influencers within the evolving carbon markets.

Current details of how to submit investment opportunities to us can be found on our website at: counteract.vc/contact



CPT Capital invests and partners with the best and the boldest companies driving the transition away from animal-dependent supply chains.

CPT Capital is defined by the companies we invest in. We support the brightest companies driving the animal-free technology revolution. From optogenetic manufacturing to molecular farming to cell-based meat, we back the most promising solutions from pre-Seed and Seed all the way through to sale, IPO and beyond.

Our investment criteria is based on backing teams and ideas aiming to revolutionise global animal supply chains at the earliest possible opportunity. Specifically, CPT Capital is looking for companies that are seeking to directly replace an animal-derived product and have strong technical barriers to entry or an IP-protected element.

CPT Capital

cptcap.com

Contact:

contact@cptcap.com

We make investment decisions based on the potential for transforming animal dependent production systems, as well as the potential to achieve extraordinary capital growth.

We look to invest as early as pre-Seed and Seed stages and are open to opportunities across the globe. We are looking for passionate and dynamic founders with a strong vision and mission alignment to drive the future of an animal-free supply chain.



Connect. Collaborate. Empower.

Creative UK champion, connect, support and invest in creative people and businesses. We're a group of diverse and inclusive professionals who believe in the power of the Creative Industries to change lives, placing creativity at the heart of the UK's culture, economy and education system.

Our goal is simple: to cultivate a world where creativity is championed, valued, and fundamentally nurtured.

We unite the Creative Industries and generate opportunities for innovation to thrive by investing in

Creative UK

wearecreative.uk

Contact:

invest@wearecreative.uk

people and their ideas. We are here for those who dare to imagine a fairer, more prosperous world, achieved through the power of creativity.



Creator Fund was built to help scientific founders take ideas out of the laboratory and turn them into businesses solving major commercial challenges.

Since 2020 we have invested in 41 start-ups. We back technical founding teams when they are uniquely qualified to win in a space and invest in markets where technological innovation is likely to be the key competitive differentiator. Our portfolio includes companies working on artificial intelligence safety, advanced drug discovery platforms, mutation-proof vaccines, and drone logistics software for healthcare.

Creator Fund

thecreatorfund.com

Contact:

hello@thecreatorfund.com

Our portfolio is available on our website below. We are uniquely placed to connect high-calibre talent into our portfolio with more than 40 PhDs across over 25 universities in the UK & Europe on our team.



DARING CAPITAL

Daring Capital is your partner in propelling impactful businesses to new heights. As an investor partner, we bring a unique blend of passion, expertise, and commitment to supporting entrepreneurs who are creating positive change in the world.

Our mission is to support extraordinary underrepresented founders with innovative solutions to pressing societal challenges. We prioritize investments in for-profit companies that are eligible for Seed Enterprise Investment Scheme (SEIS) and Enterprise Investment Scheme (EIS) status, focusing on businesses solving social problems for disadvantaged groups.

At Daring Capital, we believe in the power of diversity and inclusion. We actively seek out opportunities to invest in companies led by under-represented founders, including women, ethnic minorities, and other marginalized groups. Our goal is to unlock investments for diverse and extraordinary talent in the UK, ensuring that innovation knows no boundaries.

When you partner with Daring Capital, you're not just receiving financial support. You're gaining access to a network of experienced professionals who are dedicated

to helping your business thrive. Our team provides strategic guidance, mentorship, and connections to valuable resources, including service providers, advisors, and potential customers. We're committed to adding value beyond capital, empowering our investee startups to scale and succeed.

If you're a founder with a bold vision and a commitment to making a difference, we want to hear from you. Contact us today to explore how Daring Capital can support your journey towards building a profitable and purpose-driven company that makes a positive impact on society.

Daring Capital

daringcapital.co.uk

Contact:

info@daringcapital.co.uk



Deep Science Ventures invests in high impact companies which we have built in-house and with strategic partners, using our unique innovation methodology.

We focus across 4 main sectors:

- Climate
- Pharmaceuticals
- Agriculture
- Computation

We co-invest with financial and industry leaders into these companies at spin-out/pre-seed stage and follow on at seed stage in 20-30% of portfolio companies.

Investment Criteria:

- Impact against top level outcome - e.g., global temperature or curative potential.
- Team - ability for team to deliver against key outcomes to impact and to overcome likely blockers.
- Technology - time to TRL 9 (Net Zero) or to patient impact / clinical POC (Therapeutics) and to intermediate milestones on the development path, Technology capable of solving impact and customer/patient outcomes provided it follows predicted de-risking path, inherent tech risks are addressable through detailed and executable POC workplans.
- Neglected - Novel, Inventive, Freedom to Operate and potential to generate novel IP, compounding effects in business model / product design.
- Value Capture - High margin unit economics (Net Zero), cost-benefit clearly defined (Therapeutics), primary and secondary market (patient) segments identified, evidence of initial interest in partnership / collaboration / sales, business model is well-defined.
- Market - customers accessible through proven repeatable route to market, growing market or market with substantial unaddressed needs, market meets



Deep Science Ventures

deepsienceventures.com

Contact:

iuk@deepsienceventures.com

minimum scale criteria, scaling is not prohibited by external factors (e.g., materials or regulatory environment).

The value we add to investees:

- We build deep relationships with our founders.
- Community - we have community events within and across different sectors to bring people with similar mindsets together and to enable: problem solving, talent referrals, collective ideation, ongoing investment connections, industry input, operational advice.
- We offer direct investment to companies we have built as well as working with our wide network of investors and industry contacts to enable additional investment ranging from angels and early funders to top tier firms, and to introduce/support meaningful partnerships and collaborations.
- We have a deep understanding of teams and their technology and can help with very detailed problem solving.
- We provide connections with potential customer groups, advisors and mentors.



Award-winning Deepbridge provides investment opportunities into portfolios of actively-managed, growth-focused technology and life sciences companies, taking advantage of the potential tax benefits available under the Enterprise Investment Scheme (EIS) and Seed Enterprise Investment Scheme (SEIS).

We invest in a diverse range of sectors, including; FinTech, automotive tech, sustainable tech, drug discovery, therapeutics, healthcare tech, medtech, AI, VR/AR, Blockchain, space tech, biotech, Agritech and more.

Dealflow is sourced from numerous partners and contacts, with spinouts from 17 different universities within the portfolio.

At Deepbridge, our main priority is to always act in the best interest of our investors. We believe the best way of doing this is by taking a hands-on approach with our investee companies. We take an active role (not just a Board seat) to guide, mentor and counsel investee management teams.

Deepbridge Capital

deepbridgecapital.com

Contact:

funding@deepbridgecapital.com

The provision of hands-on operational experience, combined with financial expertise can materially mitigate the investment risk borne by the investor, along with comprehensive due diligence on investee companies.

Our ambition is to help investee companies achieve their full potential and thereby provide the best possible outcome for our investors.



Our focus is on startups commercializing defensible IP that have already established connections with potential customers.

We aim to accelerate their growth by providing not just our own capital but access to our network of international later-stage investors, ensuring that promising ventures are well-funded from the outset. We invite deeptech founders, incubators, and investors to join us in transforming groundbreaking science into world-leading companies.

Deeptech Seed Fund

deeptechseedfund.com

Contact:

Pearse Coyle

info@deeptechseedfund.com



Delin is an early-stage fund focused on investments and company-building with remarkable entrepreneurs and scientists in two sectors: life sciences, and the future of work and learning.

Life Sciences

Within Life Sciences, we are focused on the cellular immunotherapy space. Firstly, we invest in the development of innovative therapeutic concepts, and secondly in the infrastructure supporting the successful R&D of novel cellular immunotherapies. This includes the manufacturing and delivery, which is still a major technical, logistical, and regulatory bottleneck. In particular, Delin is supporting technologies to transform flexible manufacturing of cellular immunotherapies to deliver life-saving treatments to patients where they are needed.

Our initial ticket size is up to £5M at the seed stage, with a maximum lifetime investment of up to £18M. Typically Delin aims to lead seed-stage investments, and participate up to and including Series A.

Future of Work & Learning

Within the Future of Work & Learning, we are investing in European technology startups that unlock human potential.

Delin Ventures

delinventures.com

Contact:

hello@delinventures.com

We lead Pre-Seed and Seed rounds with up to £2 million. We're focused on B2B cases shaping how we'll work and learn.

We are particularly interested in solutions in the areas of Productivity, HR Tech, New Work, Workforce Upskilling, Simulations, and the Frontline Space.

Once we invest, we aim to be a partner with the company on developing and refining companies' development plans, supporting their teams to create value and mitigate risk, scale-up successfully, and enabling them to access essential advisor networks and partnerships.



The Development Bank of Wales is committed to driving innovation and growth. We provide investment into new and established innovative businesses with the purpose of unlocking potential in the Welsh economy. We are well capitalised to support exciting new investment opportunities across a range of sectors including life sciences, med tech, next generation digital technology and green innovation.

We work closely with our investee companies offering a partnership approach to maximise success. We do this through a focus on value-add activity with our investee businesses managed through a dedicated contact. This may include referrals for dedicated business support, linkage with a mentor or Non-Exec director, a large network of co-investment partners and capacity to provide follow on funding.

Our investment ranges are typically £50k to £450k for early-stage investment, rising to over £2m for venture investment. Our product range works as a funding escalator able to address business needs at each stage of their growth, providing accessible follow-on investment. Through the investor programme

Development Bank of Wales

developmentbank.wales

Contact:

Duncan Gray, Director of
Technology Ventures Investments
[duncan.gray@
developmentbank.wales](mailto:duncan.gray@developmentbank.wales)

we are therefore well placed to support businesses with feasibility study projects, industrial research projects and experimental development projects.

As an organisation for economic development in Wales the businesses we support must be based in Wales or be able to demonstrate the majority of their economic impact is in Wales.



DCP is a venture capital fund manager focused on technology-intensive opportunities. We believe in the disruptive nature of science and technology-driven innovation. Once you are convinced that innovation – not just “business-model” innovation, but science and technology-driven innovation – is the engine for sustainable economic growth, you have no choice but to admire and think of ways to support those entrepreneurs and scientists who challenge the status quo to create social and commercial value.

We believe that one of the main sources of innovation lies at the junction of industry sectors. Therefore, we focus on cross industry sectors and interdisciplinary projects to discover innovations occurring at the nexus of technology domains where capital efficient solutions can unlock significant value. In addition to a competitive edge that stems from technology and intellectual property rights, we are looking for quantifiable market potential and the right entrepreneurial skill set for that market.

At DCP, we don't just invest in visionary entrepreneurs and scientists; we strive to always think of ways to be enablers and supporters. We work hand in hand with



Diffusion Capital

dcp.vc

Contact:

contact@dcp.vc

our entrepreneurs to hit technical, financial, and product deployment targets. With over 70 years of cumulative experience in the high-tech sectors, we provide our portfolio companies with business development, legal, financial, and operational know how.

DCP has a generalist deep technology focus, with an emphasis on biotech, green technology, agritech, life sciences, advanced materials and nanotechnology, ICT. We will welcome submissions in other tech areas as well; however, we do not invest in business model innovations.

We primarily conduct Seed and series-A investments. Our initial investments are typically below EUR500K and are followed by larger checks up to EUR1-2M contingent upon successfully achieving technical and business milestones. We prefer to lead investment rounds but also do syndicates with other funds and angels.



DSW Ventures operates from Manchester with an investment thesis to invest across the UK regions outside the Golden Triangle, bridging the gap between friends-and-family investment through to Series A funding: a yawning gap for regional scale-ups.

We invest in early stage technology-based businesses and university spinouts with up to £1m per round, usually leading syndicates to deliver much larger sums as needed.

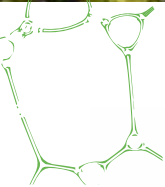
We are a thorough and very hands-on investor, offering huge amounts of support to our investee companies.

DSW Venture Capital LLP

dsw.vc

Contact:

hello@dsw.vc



Earlymarket

Earlymarket LLP is a London-based family office with an investment arm dedicated to early-stage technology start-ups. Founded by Patrick Wills and Sarah Wills, Earlymarket has been formally investing since 2015. We deploy capital of £100–£150k, along with potential follow-on capital. We focus on key investment themes including Energy Transition, Personalised Healthcare, Future of Agriculture, Healthcare Data and Delivery, Data Privacy and Security, and Smart Contracts.

Since 2015, we have successfully exited 5 companies and currently have a portfolio of 10 companies. Both Patrick and Sarah are experienced entrepreneurs, who bring a wealth of knowledge and support for companies. We understand the challenges involved in bringing a product to market and scaling it. We are hands-on, supportive, and impactful as a family office. To have the biggest impact we believe in partnering with start-ups at the earlier stages of start-up development, between Seed and Series A.

Earlymarket LLP

earlymarket.com

Contact:

innovateuk@earlymarket.com

We nurture close relationships with our portfolio companies and offer guidance to founding teams on areas such as, fundraising, human resource and recruitment, commercials, governance, and strategy. Where possible, we maximise our network of advisors, investors, and commercial contacts.

We typically look for UK opportunities with S/EIS eligibility and within high-growth markets. As thematic investors, we prefer our investments to align with one of our investment areas. We also usually look for evidence of potential product-market fit. Start-ups do not have to be revenue generating, but an MVP and potential upcoming traction is attractive. We look for an exceptional founding team and a strong board of advisors.

If you are a motivated founder whose company aligns with our investment thesis, we would love to hear from you. Please visit our website for more information.



East Innovate is a London based venture capital firm that invests in early-stage businesses developing advanced technologies in resource and energy systems. It is the venture capital arm of East Alpha, a quantitative commodity technology and research company.

We look for early-stage companies working in three focus areas:

1. Electrification and Future Commodities
2. Energy Efficiency, Waste and the Circular Economy
3. Supply Chains, Markets & Information Systems

Within these focus areas we invest in companies with breakthrough products that have the potential

East Innovate Ltd

eastalpha.co

Contact:

info@eastinnovate.com

to rapidly grow high-value long-lasting positions in growing international markets while providing material and positive impacts to multiple sustainable development goals.



Ebico Innovation is run by a group of seasoned entrepreneurs and executives driven by a shared passion for fostering the success of outstanding ideas with a positive social impact. Our focus lies in supporting determined teams with a well-defined vision for expanding their businesses and making sustainable, affordable warmth accessible to more households.

We focus on companies that:

- Create a genuine positive impact on the affordability and accessibility of household Net Zero living
- Demonstrate high growth potential
- Possess a product or service with distinctive intellectual property, either in development or as a Minimum Viable Product (MVP)
- Have a clear exit strategy in place
- Are co-founded by a minimum of two dedicated entrepreneurs.

Ebico

innovation.ebico.org.uk

Contact:

innovation.ebico.org.uk/contact-us

Ebico Innovation engages in Seed and Early Stage Investing, offering both debt and equity financing options.

Regular communication and feedback are integral to our approach, leveraging the extensive experience of our seasoned executives.

With expertise in investment management and extensive experience in the UK's energy retail sector, issues around fuel poverty, corporate finance and funding, we bring our own unique expertise in social impact entrepreneurship to the table, further enhancing the support we provide to the ventures we back.

[Investment application.](#)



EDGE

Edge is a Seed and Series A stage venture capital investor in Creative-tech, Ed-tech and Deep-tech, investing in early-stage, high-growth companies.

Edge invests in round sizes of up to £5 million, with a typical investment of £1 - £3 million. We look for people who are pushing boundaries, intellectually curious and have unlimited horizons, backing teams who have the potential to create category-defining companies.

Edge's team is an unconventional mix of multi-faceted, curious explorers, just like the founders we back. We've been operators and entrepreneurs, and we know finance. Most important of all, we know how to grow a company. In addition, our world-leading network provides specialist support and opens doors to help power our portfolio companies to success.

Edge is a proud signatory of the Investing in Women code. We are strong believers in inclusion and cognitive diversity. We encourage applications from people from all backgrounds.

Edge VC

edge.vc

Contact:

info@edge.vc

Edge seeks companies which meet the following criteria:

- Are headquartered in the UK
- Have achieved product-market fit
- Are generating repeatable, quality revenues

To find out more about Edge's investment criteria and to apply for investment, please use the form here: edge.vc/get-investment/

Visit our website for more information about the Edge portfolio, our team and network here: edge.vc



EHE Venture Studio seeks UK-based AI-powered companies with high growth potential across many sectors, particularly those operating in the future economy and developing advanced digital technologies.

Our typical investments are within the Pre-Seed to Series A stages, with ticket sizes ranging from £100,000 to £500,000. EHE is interested in start-ups that leverage AI as a foundational element, with a preference for companies based in Northern England, aligning with our objective to support regional innovation.

Value Proposition:

EHE is a team of successful entrepreneurs providing a comprehensive value proposition beyond capital investment. Through our Venture Studio model, we deliver end-to-end support, including MVP (technology) development, go-to-market strategies, venture

EHE Venture Studio

ehe.ai

Contact:

hello@ehe.ai

accounting, IP strategy, and access to a network of industry experts and advisors. EHE's fractional C-Suite and technical teams actively engage with investee companies to provide ongoing operational support, market entry strategies, and advisory services aimed at accelerating growth and securing subsequent funding. Our commitment to portfolio companies ensures that start-ups receive tailored guidance and mentorship, helping them achieve significant scale and impact within their respective markets.



Co-funded by the
European Union



InnoEnergy operates at the centre of the energy transition, bringing the technology, business model innovation and skills required to accelerate decarbonisation goals.

Established in 2010, we currently have a portfolio of 200+ companies on track to generate €110 billion in revenue and save 2.1 gigatonnes of CO₂e accumulatively by 2030. We invest off our company balance sheet into early-stage (pre-seed/seed) sustainable energy and climate technologies (typically TRL 4/5). Our core thematic focus areas are:

- Energy storage
- Renewable Energies
- Energy for transport and mobility
- Sustainable buildings and cities
- Energy efficiency
- Energy for circular economy
- Smart grids

EIT InnoEnergy

innoenergy.com

Contact:

benelux@innoenergy.com

Our investment proposition is a hybrid of cash and value-add services as we provide our portfolio companies with tailor-made support to boost and de-risk business cases and speed up time to market. Our value-add services cover the following areas:

- Market intelligence
- Technology enhancement
- Customer and growth
- Supply chain and industrialisation
- Governance strategy
- Access to finance
- Access to human capital
- Regulation
- Social acceptance and engagement.



Eka Ventures invests in companies building a more healthy, sustainable and inclusive economy.

We have two main focus areas:

Sustainable consumption

Shifting to an efficient, circular model that delivers products that are better for the consumer and the planet.

Consumer health

Moving from a reactive treatment-driven health system to a more proactive, inclusive and preventive consumer-led system.

There is an open application process for founders:
ekavc.typeform.com/submit-pitch

EKA Ventures

ekavc.com

Contact:

ekavc.typeform.com/submit-pitch

If you are not yet ready for this, the best way to get in touch with one of the team is via their emails on the website.

Eka seeks to assist portfolio companies from a strategy, network, talent and fundraising perspective.



Elbow Beach Capital backs early-stage businesses whose technologies have the potential to solve our planet's biggest challenges. We target long-term value creation, whilst working with founders and entrepreneurs to accelerate the development and implementation of positive impact technologies.

We look for early-stage ventures, typically with capital needs between £0.5 million and £1.5 million, who are developing unique and scalable solutions to significant environmental or social problems. Beyond technology, we also place a strong emphasis on market fit and team, supporting start-ups with strong governance and company ethos, but also with commercial viability and a clear runway to financial growth.

Elbow Beach Capital

elbowbeachcapital.com

Contact:

[entrepreneurs@
elbowbeachcapital.com](mailto:entrepreneurs@elbowbeachcapital.com)

Value added:

We pride ourselves on actively engaging with and supporting our investee companies through every stage of their growth and development; and ultimately through exit. We win as a team. Science-led entrepreneurs often do not yet have the commercial insights to develop and promote their concepts; Elbow Beach Capital acts as a catalyst in converting complex concepts into commercial realities. Our business acumen combined with the environmental science background of our CTO allows us to deliver significant value-add on an accelerated time scale



Elsoms Seeds is the UK's leading independent seed specialist and plant breeder. We breed, supply and treat high quality vegetable and agricultural seed throughout the UK, EU and North America, using the latest in plant breeding research and seed technology. We are passionate about contributing to feeding the world and improving the environment. As well as our plant breeding and seed technology businesses we also contribute to these goals by investing in Ag Tech start-ups.

Established in 1844, Elsoms has remained an independent family-owned business throughout its history and continues to develop as the leading plant breeding specialist and trusted supplier of top-quality seed in the UK. We are passionate about seeds. Throughout the long history of the company, the professionalism and teamwork of our specialist staff has ensured that Elsoms always provide excellent service. We also work alongside top UK plant research institutions and our partners, enabling us to adapt and fulfil the changing demands of customers.

Elsoms Seeds

elsoms.com

Contact:

bus.dev@elsoms.com

As the UK's leading seed specialist, we are continually fighting disease and other issues facing growers. With our own plant breeding programmes and seed treatment facilities, we can provide our customers with the best possible products. Across our four key business activities, vegetable seed, agricultural seed, seed treatment and breeding, our experienced staff provide suppliers and customers with a high level of expertise and support for which Elsoms have become renowned.

We work closely with a wide range of major UK and international companies and our reputation for professionalism ensures we maintain our valued, long-term partnerships to continue benefitting our customers and partners.



Empowering Your Growth Journey

Are you an ambitious small or medium-sized enterprise (SME) seeking strategic investment and support to fuel your growth? Look no further than Emles Venture Partners, a leading venture capital firm dedicated to empowering visionary entrepreneurs like you.

At Emles Venture Partners, we're more than just investors – we're your dedicated partners in growth. Founded by a serial entrepreneurs with a proven track record of successful exits, Emles is driven by a passion for fostering entrepreneurship and empowering visionary founders.

At Emles Venture Partners, we're passionate about partnering with innovative startups poised for success. Our investment criteria include:

- Early-stage startups with disruptive solutions.
- Founders with a clear vision and strong execution capabilities.
- Sectors of interest include net zero, health and wellbeing, next-generation digital technologies and fintech.
- Equity investment range of \$50,000 to \$5,000,000 in a priced round

As your strategic investment partner, Emles Venture Partners offers more than just capital. We provide:

- Strategic guidance and operational support to navigate growth challenges.
- Access to our extensive network of industry experts, investors, and mentors.
- Tailored resources and connections to accelerate your business trajectory.
- Commitment to diversity and inclusivity, welcoming founders from all backgrounds.



Emles Venture Partners

emlesventure.com

Contact:

emanuel.zareh@emles.com

- Long-term partnership focused on driving mutual success and impact.

Why Choose Emles Venture Partners?

- Quick decisions and streamlined investment processes
- Unconstrained approach with no bureaucracy or checkboxes
- Commitment to long-term partnerships and mutual success

Join forces with Emles Venture Partners to unlock your full potential and scale your business to new heights. Connect with us today to embark on an exciting journey of growth and innovation.



Empirical Ventures

Empirical Ventures is a S/EIS Deep Science fund that invests at pre/seed stage. We back century-defining technologies that advance human capability.

Empirical Ventures invests up to £350k tickets in pre-seed and seed rounds in sectors that are solving problems in the following sectors: Life Sciences, Advanced Materials, TechBio, Photonics and Quantum Hardware, Robotics and Automation, AgChem/Tech and DeepTech. We are looking to support startups developing entirely new technologies developed from fundamental research, creating IP-rich innovations with competitive defensibility.

At Empirical Ventures our investment criteria include: One or more scientific disciplines are fundamental to the technology you are developing. inherent novelty to your approach - your USP builds on new advances in our scientific understanding, and S/EIS eligibility.

Empirical Ventures has been building a reputation around our domain expertise and due diligence and in-turn we have developed a track record of value-add both pre- and post-investment. At Empirical Ventures we aim to address the lack of lead science investors.

Empirical Ventures

empiricalventures.vc

Contact:

hello@empiricalventures.vc

We are specifically trying to help founders who are looking to build syndicates for completing their investment rounds. By sharing our due diligence with the founders we can act as a lead science investor, even if we are not necessarily leading the round from a financial perspective.

To learn more about us, our portfolio and investment application process please visit our website atempiricalventures.vc



Eos invests in, & commercialises, science & technology, from local seed-stage to global scale, with a focus on improving lives.

We are a trusted link between non-specialist investors & highly specialist investments, through relationships that are systematic, far-sighted & bold. Founded in 2014 initially as an angel investment syndicate, building sector focus, a Scottish network and an early-stage portfolio, we scaled in 2021, with the launch of an annual Innovation Fund (EIS) and later-stage Venture Partner investors, working alongside the syndicate, as well as building our executive team and international networks.

With deep roots in Scotland and a global mindset, Eos is a leading investor within four impact areas:

- Disease, diagnosis, prevention and treatment
- Food and water security
- Energy security, climate change & pollution
- Improvement and sustainability of industrial processes.

Eos Advisory

eos-advisory.com

Contact:

innovate@eos-advisory.com

Eos invests across the UK, but only in companies whose addressable market is global. The focus on Scotland is because of:

- A global reputation for innovation & university research, built over centuries
- Our strongest network & first access to relevant deal flow
- Our hands on approach to supporting portfolio companies

All portfolio companies are focussed on either improving quality of life or environmental sustainability. Historically, first round investments have been in the £500k to £3M range, with growth rounds up to £10M and we actively work with a global network of co-investors who can also add value to portfolio companies.



Epidarex Capital is a venture capital firm led by a diverse team of early-stage investors building breakthrough life science companies in emerging hubs within the UK and US.

Our aim is to build extraordinary companies that transform novel science into the next generation of highly successful drugs and medical devices. As founding investors, we provide seed or Series A funds and have a strong track record of attracting follow-on investment from top tier funds.

We often partner with leading universities and research institutions to provide much needed capital for their most innovative ideas.

We invest in most areas of life science including biotechnology and pharmaceuticals, medical devices and health tech.

Key factors that we consider in our evaluation include:

- Disruptive platform technologies that address large and unmet medical needs
- Novel innovations that offer a sustainable competitive advantage
- Future pipeline of high value products deliverable to the patient or customer
- Robust Intellectual Property portfolios (patents, trade secrets and “know how”)

Epidarex Capital

epidarex.com

Contact:

info@epidarex.com

- Prospective commercial partners and early evidence of market validation
- Early traction and support from key opinion leaders and health practitioners
- Clear regulatory (and where applicable, insurance reimbursement) strategies
- Efficient use of capital
- Highly driven and tenacious founders and entrepreneurs
- Potential for outstanding financial return and significant patient impact.

Our international management team has a track record of successfully partnering with scientists and entrepreneurs to develop highly innovative products for the global healthcare market. We leverage our extensive relationships, industry operating experience and a disciplined investment approach to add significant value to our portfolio companies and to generate strong returns on investment for our investors.



Equity Gap is a member-led angel syndicate established to help match investors with entrepreneurs looking for early stage business funding.

Equity Gap members are prepared to invest in any SEIS/EIS eligible sectors, with the individual decision to invest driven by factors including prior knowledge of the sector, how the company's proposition solves customer problems, the commercial opportunity and traction achieved, the business's willingness to work with investors and critically the founder team experience and capability.

The existing portfolio are all companies using disruptive technologies to meet customer and societal needs, in areas such as digital services, manufacturing processes and widening access to clean technologies.

Equity Gap supports most portfolio companies with an Investor Director from our member base, appointed by mutual consent to the board, and a board observer who is a member of the Equity Gap team. Investee

Equity Gap

equitygap.co.uk

Contact:

enquiries@equitygap.co.uk

companies benefit from mentoring and knowledge sharing by our diverse and accessible cohort of investor members, many of whom are exited founders; company leader peer events to build networks and share best practice; access to data, insight and reporting tools and ongoing input from Equity Gap's experienced team. Prospective investee companies can find out more about Equity Gap's criteria, process and portfolio at our website.



Founded in 2005, ETF Partners (The Environmental Technologies Fund) is Europe's original venture capital firm dedicated to sustainability and impact investing. For nearly twenty years, we have established a leading position in promoting sustainability through innovation.

ETF Partners is founded on the conviction that entrepreneurship and innovation are critical in addressing the global challenges presented by the climate crisis. We are committed to fostering and supporting Europe's ecosystem of pioneering entrepreneurs who are creating the innovative solutions capable of making a profound environmental impact.

ETF Partners

etfpartners.capital

Contact:

IUK@etfpartners.capital

We believe in the transformative power of aligning profit with purpose in order to build a more sustainable future. For additional information about our investment thesis and approach, please visit our website at etfpartners.capital



The Evenlode Foundation invests to build a diversified portfolio of impact-focused start-up companies.

The Evenlode Foundation mandate is to invest for long-term, system-level positive impact, for the benefit of our society and our world, wholly funded from Evenlode Investment Management profits. Through Evenlode Impact we initially invest £50 to £250k at pre-seed and seed, and follow-on appropriately to Series A. We begin every relationship with constructive due diligence and connection to the community, and in some cases hold a board seat. We always build close relationships with our teams, where they need us, and look for those that listen, hustle, build, and experiment.

Evenlode Impact

[evenlodeinvestment.com/
our-foundation](https://evenlodeinvestment.com/our-foundation)

Contact:

impact@evenlodeinvestment.com



Exceptional Ventures

BELIEVING
IN BELIEVERS

At Exceptional Ventures, our mission is to help people live longer, healthier, and happier lives, maximising what we call the Joyspan®. Based in London, we invest in the most passionate, purpose-driven founders who are driving the wellness revolution.

We specialise in early-stage (pre-seed and seed) startups in the HealthTech, FoodTech, and Financial Wellbeing sectors, where our subject-matter expertise, hands-on support, and EV Family network have the greatest impact. While we primarily invest in the UK and Europe, we also back exceptional companies globally.

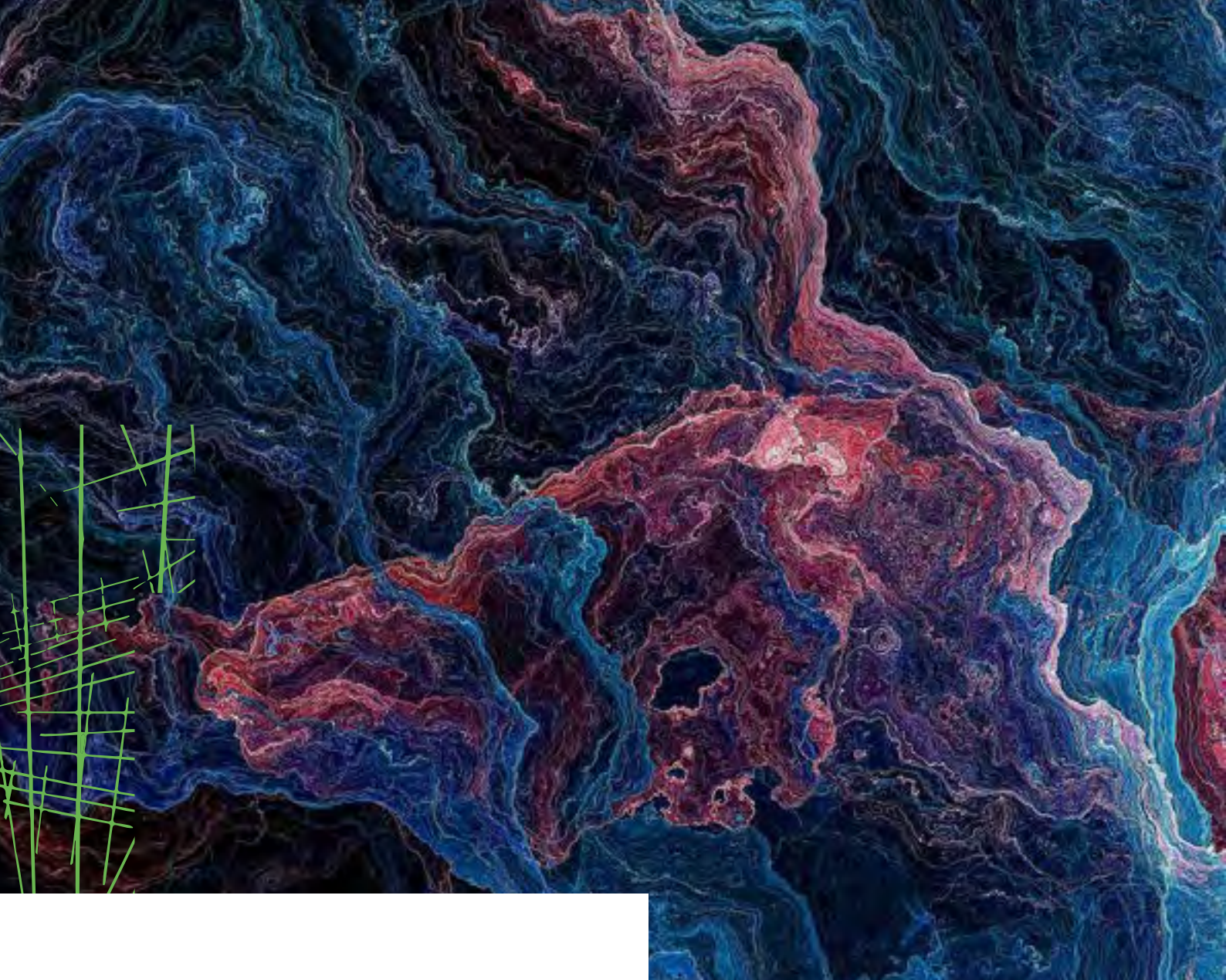
More than investors, we see ourselves as another entrepreneurial company within the ecosystem, offering capital, strategic and operational expertise,

Exceptional Ventures
exceptional.ventures

Contact:
hello@exceptional.ventures

and 1:1 support to help founders scale their vision. Our values, investment approach, and commitment to Joyspan® enable us to attract the best entrepreneurs, drive meaningful progress, and inevitably generate exceptional returns.

If you're a visionary founder driving the wellness revolution forward, let's talk!



Extantia is a venture capital firm backing pioneers in climate. As a leading climate tech generalist, the firm's investment strategies — Extantia Flagship and Extantia Allstars — are dedicated to supporting climate-focused companies and venture funds.

Founded in 2020 and headquartered in Berlin, the firm manages approximately €300M in AuM. Extantia Flagship directly invests in software and hardware solutions that address large, near-term market

Extantia

extantia.com

Contact:

innovateuk@extantia.com

opportunities with the power to redefine industries. It focuses on Seed to Series A rounds across Europe, with initial tickets ranging from €1-5 million. For more information about Extantia and its investment approach, visit www.extantia.com



**Fearless Adventures – Shaping
a future where fearless
entrepreneurship thrives.**

Here at Fearless Adventures, we like to do things differently.

We are built by founders, for founders, and through our unique investment model, we aim to accelerate a company's growth trajectory to help the founder achieve a market-leading exit.

The genesis of Fearless Adventures came from our frustration as founders ourselves: building, scaling, and exiting our own businesses while working within the confined boundaries of a rigid investment landscape, whereby investors provided little support outside of money alone. In response, we've built an investment model that provides a platform of genuine support, helping founders to tackle the ever-growing list of challenges that come with scaling a business. Investment through Fearless Adventures brings not only capital but also mentorship from experienced entrepreneurs, omni-channel marketing expertise from industry specialists, recruitment support to help build a team, warehousing and fulfilment services, financial accounting, and strategic exit planning.

Fearless Adventures

fearlessadventures.co.uk

Contact:

hello@fearlessadventures.co.uk

Our first-hand experience in scaling and exiting some of the most exciting brands in the UK has led us to focus our investments on the e-commerce, technology, and consumer landscape, with a passion for supporting founders from under-represented groups and those looking to leave a positive impact on our planet. We're proud to share that 33% of businesses in our existing investment portfolio are female-founded, 55% are female co-founded, and 89% of businesses are based in the North of England, a region that has historically been under-served by the investment community.



firstminute capital

firstminute capital is an early-stage VC investor backing entrepreneurs who attract the best teams to solve the biggest problems using tech.

firstminute capital backs pre-seed and seed stage tech companies across the globe, focusing on the UK and Europe.

We invest between £250k to £3m, leading investments in the UK and Europe, and co-investing with a local investor further afield.

We are tech sector agnostic, looking for founders who are talent magnets building category defining businesses.

Founded by Brent Hoberman CBE (lastminute.com and Founders Forum) and Spencer Crawley, firstminute capital sits at the centre of a unique network, including

firstminute capital
firstminute.capital

Contact:
[Contact form](#)

an investor base that includes over 130 unicorn founders and global CEOs. This positions us to uniquely support our portfolio companies beyond capital, by plugging them into an ecosystem of experienced operators who can provide industry expertise and operational support, having been through the challenges of scaling and running businesses of all stages themselves.



Foresight

FOR A SMARTER FUTURE

Foresight's Ventures team makes equity investments into fast-growing companies that are building some of the most exciting deep tech, hard tech solutions and enterprise software.

It is part of Foresight Group's award-winning Private Equity division, which specialises in growth & buyout, venture capital and private credit. Its investment team is based across the UK and Ireland, with venture partners based in the US, Israel and UAE.

Foresight Group, with over £12 billion AUM, invests to support the energy transition, decarbonise industry, enhance nature recovery and realise the economic potential and positive impact of ambitious companies.

Foresight WAE Technology Fund

Group Website

foresight.group

Ventures Website

foresight.group/growing-companies/ventures

Contact:

Anastasia Sagaidachna

asagaidachna@foresightgroup.eu

Desmond Cheung

dcheung@foresightgroup.eu



FOV Ventures is Europe's go-to fund for ambitious founders building the next era of compute—one that's more intelligent, more spatial, and more human. We invest at the convergence of frontier technologies like Spatial Computing, XR, AI, Gaming, 3D, and Robotics.

With offices in Helsinki, London, and Paris, we back Europe's top technical talent from day zero, leading pre-seed rounds or following at seed with €100K to €1M investments. We're collaborative by default, bringing in co-investors and value-add angels, while reserving capital for future rounds.

FOV Ventures

fov.ventures

Contact:

fov.ventures/contact-us

We've been in this space for nearly a decade—as founders, investors, and operators—giving us the expertise, networks, and commercial insight to help you scale.



UK Innovation and Science Seed Fund (UKI2S) and Blue Ocean invest at the very early stages in “deeptech” companies based on highly innovative technology.

This technology often emerges from the UK’s publicly funded science and knowledge base and in particular from the partners in the fund, who include several of the key funding bodies in UK science, including UKRI, Dstl and BEIS.

Although we are entirely funded by public entities looking to support and enhance innovation in their spheres, we operate on very similar lines to most venture capital firms, though with a higher appetite for early-stage risk than most venture firms. We are usually the lead or co-lead investor at the pre-seed and seed round stage, and almost always expect to play a substantial role at board level for at least the first couple of years, helping to build out the board and management team, as well as building the funding strategy and helping source further investment for later investment rounds.

We are a long term and supportive investor with a substantial portfolio of existing investments, some of

UK Innovation & Science Seed Fund

Managed by

Future Planet Capital

ukinnovationscienceseedfund.co.uk/pitch-for-investment/

Contact:

Innovategrants@futureplanetcapital.com

which we have held for over 15 years. We invest across a wide range of technology areas but have a particular interest in space, engineering biology companies (including those with in silico products), companies developing fusion energy technologies, and companies developing “dual use” technologies with applications in both defence & security and civilian markets.

Please see all funds here

[Our Funds - Future Planet Capital](#)

For companies based in the West Midlands, please go to the Midven website midven.co.uk



GC Angels (GCA) is an equity investment vehicle operated by the Growth Company (GC) and funded by the Greater Manchester Combined Authority (GMCA). GCA is the most active pre-seed investor in the NW – we aim to make 10 investments per year – with over 50 investments made since 2018.

As well as providing investment, GCA can also provide founders with access to a wider support network of advisory services and grant funding opportunities from the GM Growth Hub.

Investment Thesis

- GCA operates as an FCA-regulated venture capital fund, co-investing alongside Angel and VC partners from across the UK.
- GCA does not require SEIS or EIS shares.
- Investments are exclusive to businesses in Greater Manchester or those willing to relocate within six months post-investment.
- GCA balances the need for financial returns with a desire to create social impact in all our investments.

Investment Framework

- **Portfolio Overview:** 40 companies total (Mar 2025). 35% female founded and 20% ethnic minority founded.
- **Investment Stage:** Focuses on pre-seed and seed funding, with a preference for businesses generating revenue. Businesses that are pre-revenue are considered if they can demonstrate a clear pathway to commercialization within a year.
- **Investment Size:** £50k - £200k as part of syndicated rounds of £250k - £1.5m.
- **Leverage Requirements:** As a co-investment fund, GCA can only invest in rounds where at least 75% is committed by other investors



GC Angels

gcangels.uk

Contact:

GCangels@growthco.uk

- **Investor profile:** GCA can act as lead investor in any round and conduct necessary commercial and legal due diligence.
- **Sectors:** Sector-agnostic - but we cannot invest in gambling, alcohol, tobacco industries. We also prefer not to invest in businesses with commercialization timelines exceeding 12 months - so deep-tech, life-sciences etc may not be a fit.
- **Valuation & Equity:** GCA targets companies valued between £1.5m - £5m pre-money.
- **Fees & Expenses:** 5% arrangement fee /1% management fee per annum. Legal expenses capped at £2k.
- **Governance:** GCA does not require a Directorial board seat as part of its investment terms, but does require a board observer seat as well as access to financial accounts post investment.
- **Follow-on:** GCA does not provide follow-on investment but can refer portfolio businesses into the main GMCA investment fund which invests £250k - £5m via equity or debt instruments.
- **Support:** Post-investment, GCA can provide strategic support via strong relationships with GMCA and the GM Growth Hub.

Contact: GCangels@growthco.uk

using the following layout:

Email Subject: IUK IPP - Company Name - Round Size

Green Angel Ventures is the reference early-stage investor for UK climate innovation. We welcome funding applications from early-stage companies that are committed to addressing global warming and climate change challenges. This includes companies focused on reducing or reversing greenhouse gas emissions or preserving and restoring the natural environment.

Our investments are primarily targeted at resource focused ventures in key sectors, which include Energy, Transport, Buildings, Food and Agriculture, Industry & Recycling, as well as Carbon Removal and Nature based Solutions.

At GAV, we are particularly enthusiastic about fostering diversity and encouraging applications from founders representing minority groups.

GAV's value to investee companies is exceptional, due to our 350 specialist members' deep expertise in critical climate change sectors.

We appoint experienced non-executive directors post-investment, offering invaluable guidance and leveraging their extensive knowledge to aid companies in seizing opportunities and overcoming challenges. Our specialisation in climate innovation distinguishes us, providing more than just financial support. We offer a distinctive combination of industry knowledge, rigorous due diligence, and ongoing mentorship. Our commitment extends beyond funding, making us a valuable partner in your quest to combat climate change and foster sustainable growth.

Companies considering Green Angel Ventures for funding should meet the following investment criteria:

1. The company must have an innovative product or service which is able to demonstrate its effect in tackling climate change. This includes tangible



Green Angel Ventures

greenangelventures.com

Contact:

investments@greenangelventures.com

impact such as nature-based solutions, biodiversity improvement, etc.

- 2.** The company should be eligible for the Enterprise Investment Scheme (EIS) - in other words, UK-based and eligible for advance assurance by HMRC (although this does not need to have been received before you apply).
- 3.** The company must have a targeted Exit plan within 3 – 7 years.
- 4.** The company must be investor-ready, with a business plan, financial projections, an established team, evidence of demand, a clear competitive advantage and protectible IP.
- 5.** The company should have developed its product or service to at least MVP stage, or in Technology Readiness Scales (TRL) 5 or above. The company can be pre-revenue.
- 6.** We typically invest between £200k and £1.5m ourselves, we often co-invest alongside other professional investors and are happy to lead or follow.



Henley Business Angels (HBA) is an Angel Network based out of Henley Business School. Established in 2016, HBA exists because of its members, who support entrepreneurs through a combination of investing and mentoring. Members of Henley Business Angels represent a cross section of business leaders from the communities of the University of Reading and Henley Business School, including successful entrepreneurs, MDs/CEOs, partners, chairpersons and NEDs of private and public companies.

Central to Henley Business Angels' core mission of investing in entrepreneurs is to support their professional and personal progression, as well as provide mentoring and coaching. Entrepreneurs that are successful in being considered for investment are invited to Henley Business Angels' highly regarded day-long Investment Readiness Workshop, for entrepreneurs to gain invaluable knowledge and advice to further expand and develop their business. Areas explored as part of the required workshop include pitching for investment, financial management, legal, IP strategy, accounting, HR, and more. Henley Business Angels accepts applications from companies in most sectors, however, science and technology innovation-based businesses are preferred.

Certain sectors like arms & weapons, fossil fuel exploration and tobacco will not be considered. Henley Business Angels typically look to invest in companies that are:

- Registered in the UK
- Raising £50k - £500k
- SEIS/EIS advanced assured
- Strong management team



Henley Business Angels

henleybusinessangels.com

Contact:

[entrepreneurs@](mailto:entrepreneurs@henleybusinessangels.com)

henleybusinessangels.com

- Ability to show how funds will be used for growth
- High growth potential
- Sustainable competitive advantage.

Henley Business Angels' full Investment Criteria can be found here:

henleybusinessangels.com/investment-criteria/

Henley Business Angels investors provide a vast range and high level of expertise to their investments, with several HBA members taking on roles as NEDs and specialist advisors within their investment once they've invested. Henley Business Angels members do not just invest financially, but also their knowledge, time and experience to support entrepreneurs and their growth strategy as effectively as possible. Furthermore, being based out of a world-renowned business school allows HBA to provide a vast network of academic, professional and business contacts. A long-standing collaborator with the Henley Business School and the University of Reading is Professor William Kilgallon, who is also one of the network's most active members and chairs the company presentations session at HBA's quarterly Company Presentations Event. Entrepreneurs interested in speaking with Henley Business Angels are advised to contact Chris Rees, Director of Henley Business Angels, at entrepreneurs@henleybusinessangels.com.



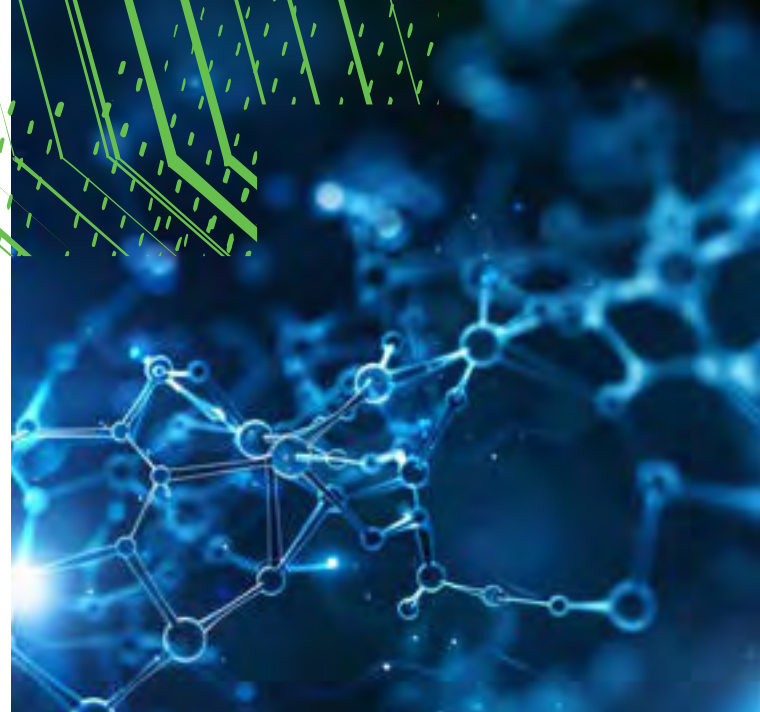
Heran Partners is a specialist venture capital investor committed to creating transformative impact within the life sciences and healthcare industry.

Our investment philosophy centers around addressing emerging health challenges such as an ageing population, the surge in chronic diseases, and the associated increase in healthcare costs. We believe in harnessing the revolutionary potential of technology, science, and data to meet these challenges head-on. We focus on solutions that are solving an unmet need in the market. Our investment approach is built upon three strategic pillars which are all centered around enabling technologies:

1. **MedTech:** Creating efficiencies through lab equipment & services, diagnostic analysis platforms, and multi-omics technologies.
2. **HealthTech:** Leveraging software and data to create value within the healthcare system, enhancing patient care, expediting research, generating novel insights, and ensuring overall cost-effectiveness.
3. **Convergence:** Investing in groundbreaking technologies that seamlessly integrate MedTech and HealthTech concepts.

HERAN is as an active investor who is heavily involved with each of its investments. To ensure positive impact, we believe it is imperative to be close to our ventures and have frequent interactions. We provide mentorship, hands-on support and operational expertise to the management teams we invest in.

With our HERAN HealthTech Funds we make equity investments in companies with scalable products or technologies that have a product-market fit. Our Funds invest in seed, Series A or B and can make follow-on investments.



Heran Partners

heranpartners.com

Contact:

deal.flow@heranpartners.com

Our focus

HERAN focuses on innovation, technology and science that can generate scalable positive impact and disruption within the life sciences and healthcare industry in the broadest sense. With our expertise, network, guidance, and strong focus we aim to support those pioneers, disruptors and entrepreneurs who want and can improve healthcare in all its facets. This ranges from:

- Creating financial efficiencies for healthcare systems
- Introducing prevention before cure
- Implementing faster trajectories and less uncertainty for patients
- More accurate diagnosis and therapy
- More individual care and cure.



HERmesa

HERmesa is a women-led angel syndicate in the UK backing female (co) founded ventures at pre/seed stage.

HERmesa is sector agnostic, however, we require women (co)founders to hold at least 20% equity and to have meaningful decision making roles. We strongly prefer digital technologies / IP led investments vs product companies. We do not invest in med / bio-tech or therapeutic startups.

HERmesa investors typically invest between £50-£150k/company and we invest collectively, grouping all interested investors under a nominee framework.

HERmesa

hermesa.co.uk

Contact:

airtable.com/shrs6fTceS6ON8nCB



HG Ventures

HG Ventures is the corporate venture capital arm of The Heritage Group (THG). It supports innovation and growth by investing and partnering with private companies developing new technologies and approaches in THG's core and adjacent markets. THG's purpose is to build a safer, more enriching and sustainable world by harnessing the power of family. By leveraging the world-class expertise of THG operating companies and research centre, HG Ventures offers a unique value proposition to its portfolio company partners.

HG Ventures invests in early stage and growth stage companies developing advanced materials and systems for transportation infrastructure, environmental services and specialty chemicals.

We will invest at the pre-revenue and pre-product stage, but we want to see the beginnings of a dedicated, full-time executive team. We are based in the United States, and we have made multiple investments in the UK and look forward to helping more UK-based companies grow in the UK and expand to the United States if appropriate.

HG Ventures

hgventures.vc

Contact:

InnovateUK@hg.ventures

Generally, HG Ventures will invest up to \$20 million in each portfolio company, but we have the ability to invest more depending on the opportunity. We are flexible with regard to initial investment amounts, including participation in relatively small financings. We take a long-term approach to building value. We focus on value creation milestones with no fixed expectations for liquidity.

Our team has the capability to lead and structure financings, but we will also follow other investors into a syndicate. We will be actively involved in helping companies grow and will take board seats when appropriate.

We apply strict confidentiality policies and procedures to protect private company information. All proprietary information is secured within a small, defined group of HG Ventures professionals and is not shared with others in THG unless authorized by our entrepreneur partners.



Hiro Capital is a London / Luxembourg based Technology Venture Capital fund that invests globally in Games, IP, Spatial Computing and Metaverse and Technologies. Hiro Capital invests at Seed through Series B stages and backs experienced entrepreneurial teams, building innovative technologies and content with a strongly differentiated proposition and with the scaling opportunity to become very large.

The Hiro Capital team are Games and Technology investors who are also Games and Technology entrepreneurs. Hiro Capital's core belief is that Videogames, Spatial Computing Technologies, Creator Platforms, and Digital Sports will be a central pillar of Entertainment, Economic, and Social Life in the mid-21st century. Hiro invests in the innovators who are building that future.

Hiro Capital

hiro.capital

Contact:

innovateuk@hiro.capital

Hiro was founded by entrepreneurs that have been there before and carry the scars of building successful businesses. The whole team is very operational and we put our expertise at the service of the companies we invest in, whether it's strategic advice, building a business plan, needing introduction from our vast global network in the industry, etc. The Hiro team have co-founded and angled over \$9 billion worth of some extraordinary games, sports and technology companies.



Hoxton Ventures is an early stage European based sector agnostic venture capital firm. We take risks on brilliant people and products. We work with founders on a mission to change the one thing they think is fundamentally broken in the world.

We welcome young or first-time founders who are technical or domain experts in their field.

Our focus is finding Europe's best early stage tech startups and building them into large revenue, category-defining companies. We believe great companies are built by great teams, not by venture capitalists. Some might call our approach old-school. We lead pre-seed or seed rounds. We invest at fair terms and reserve capital to continue investing through a company's journey. We typically invest between \$500k to \$5 million, although we have gone as low as \$250,000 and as high as \$10 million. We like to aim for an ownership position between 10% to 20%.

When we believe in your vision, market and team, we get conviction quickly. We often write the first large check a company receives. We aren't afraid of being the only investor, but are happy to invest alongside others.

Hoxton Ventures

hoxtonventures.com

Contact:

businessplans@hoxtonventures.com

We work hard behind the scenes to maximize value. We provide introductions, help make key hires, provide market intel, ink strategic partnerships and handle difficult operational issues. Sometimes we might even spark crazy acquisition offers. Often, our work is providing a sage perspective that comes from living through multiple market cycles, and having the forthrightness to hold honest conversations others shy away from.

Having spent most of our working lives in Silicon Valley, we aim to replicate in Europe what we saw work in California. We dream big and are unashamedly ambitious for our companies.



Impact X Capital Partners (“Impact X”) was launched in 2018 as a double bottom line venture capital company, founded to support differentiated deal flow. Impact X started investing from its first fund, Impact X Launch, in 2019 and in Q4 2023 started investing from its second fund, Impact X Global I LP (“Impact X Global I” or the “Fund”).

Having identified a diverse and undersaturated niche of founders with compelling business models, Impact X sources uniquely differentiated deal flow to generate returns for investors. Via its Investment Team and Founding Members, Impact X provides its entrepreneurs with access to industry experts and strategic resources, to ensure that portfolio companies receive critical input to realize their visions and generate long-term investor value.

Impact X invests in underrepresented communities of technology and creative professionals. Impact X targets three industry sectors: (i) digital and technology; (ii) education, health and well-being; and (iii) media and entertainment (including tech such as gaming and advertising tech as well as content creation). Impact X’s Management Team and Founding Members collectively have over 500 years of experience identifying, selecting, investing, managing, training and grooming diverse groups for successful businesses, and are therefore poised to capitalize on developing innovators from similar communities on behalf of Impact X Global I.

Impact X

impactxcapital.com

Contact:

Info@impactxcapital.com

In addition, Impact X realized it could compound impacts if as a diverse investment team, it invested in diverse entrepreneurs with tendencies to hire and promote diverse talent. This multi-layered approach compounds positive impacts. Impact X has demonstrated how this layering empowerment works. At Impact X’s inception, a team of diverse investors took responsibility to invest working capital in order to establish Impact X. Impact X then went out to partner with like-minded limited partners (“LPs”) in its pilot fund, Impact X Launch. The diverse investment team made 25 investments in diverse entrepreneurs, delivered venture scaled and timed ROI and the portfolio created hundreds of jobs filled by diverse people.

Impact X makes direct venture capital investments in diverse entrepreneurial and creative innovators. Impact X invests primarily for financial returns to LPs and secondarily for measurable social impact.



IP Group develops world-changing science and technology businesses across life sciences, technology and cleantech (through Kiko Ventures). The Group has a strong track record of success, having been the founder investor in a number of high-profile companies including Oxford Nanopore Technologies plc, and has one of the most exciting portfolios of high-growth businesses in Europe. The Group also owns Parkwalk, the UK's largest growth EIS fund manager which backs world-changing technologies emerging from the UK's leading universities and research institutions.

We're one of the most active investors in university and other research-based companies in the world, with a proven track-record in backing and nurturing science and technology-based businesses to deliver impact alongside returns. We're committed to backing and supporting businesses that bring about a better future for people and planet - companies whose products and services meaningfully contribute to a healthier, tech-enriched; and regenerative future.

Since pioneering the IP model more than two decades ago, we've built up a considerable knowledge bank and honed our approach to ensure all stakeholders benefit from the work we do through our portfolio companies.

Why IP Group?

- Track record
- Portfolio – access to the best science
- Permanent capital structure



IP Group Plc

ipgroupplc.com

Contact:

NewBusiness@ipgroupplc.com

- Impact
- Expertise
- Global group.

Key Figures:

- IP Group has been a leading driver of scientific investment for over 20 years. We have invested over £1.2 billion in UK early-stage scientific development, fueling the creation of three unicorns, and helping the companies we have backed to create more than 10,000 jobs
- IP Group owns Parkwalk, the UK's largest growth EIS fund manager, which has raised over £400m and backed more than 150 university spin outs across the UK
- Together, we work at the cutting edge of life sciences, deeptech and cleantech. We're scientists, innovators and practitioners with in-field experience and insight
- Together, we have backed over 500 science-based companies which are delivering ground-breaking innovation – from Ceres and Oxford Nanopore, to investments such as Istesso, First Light Fusion, Featurespace and Oxbotica



IQ CAPITAL

IQ Capital is a deep tech venture fund based in the UK. We initially invest up to £8m per company from our Fund IV, in disruptive UK-based deep tech companies capable of dominating their global markets. We invest at Seed and Series A, and we're actively seeking investments in AI, Data Science, Robotics, Computational Biology and more.

We can partner with you throughout your growth – we know that it takes time to develop global markets, and that deep tech can take longer & cost more than originally expected. We have extensive global connections, and our own investors are themselves committed to science & innovation – from family offices and successful tech entrepreneurs through to institutions including the British Business Bank.

IQ Capital Partners LLP

iqcapital.vc

Contact:

hello@iqcapital.vc

We keep pace with the success of our outperforming businesses, helping to build a robust VC syndicate, and for our part we can invest up to £30m from our IQ Capital Growth Fund, as you raise your later rounds.