

Future Leaders Fellowships Peer Review Training Registration Guide

Summary:

This document aims to provide guidance to reviewers for the Future Leaders Fellowships (FLF) scheme on:

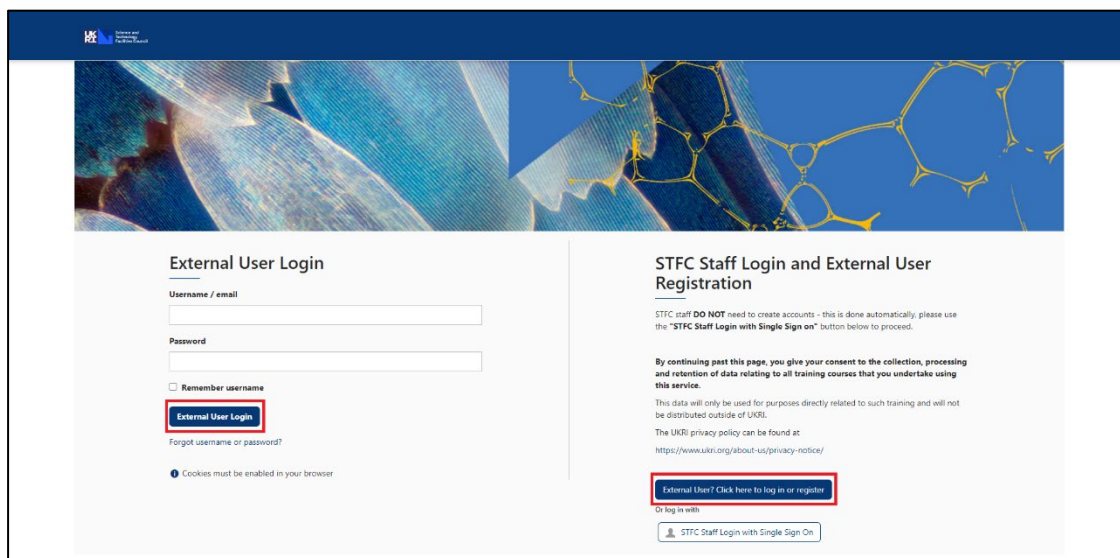
- [Accessing the FLF Peer Review online training course](#)
- [Registering an account](#)

Accessing the FLF Peer Review online training course

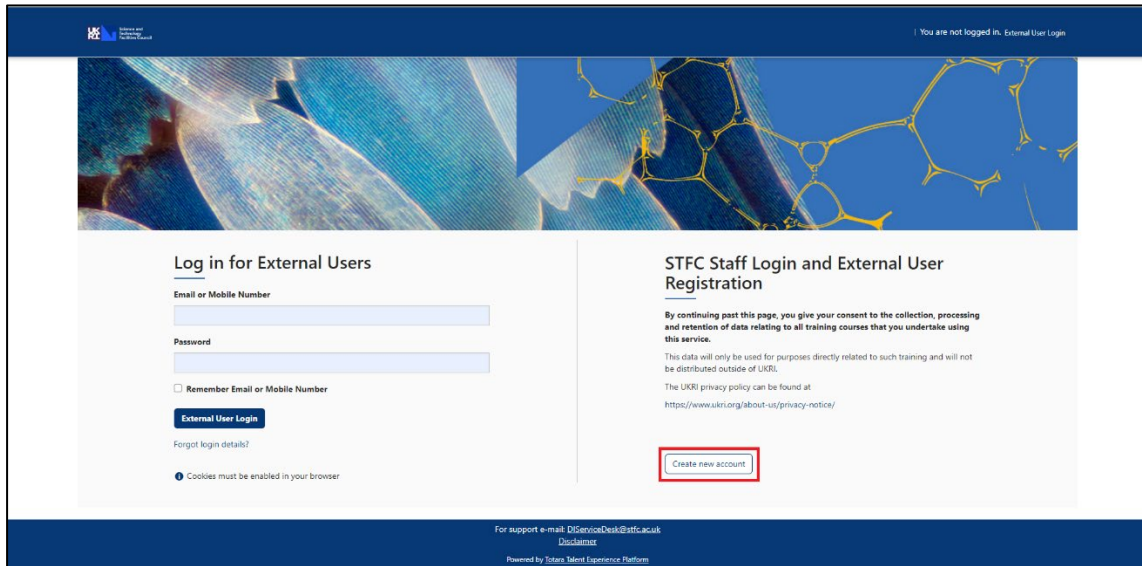
The FLF Peer Review online training course is hosted on the Science and Technology Facilities Council's (STFC's) learning management system and can be accessed using the following link:

<https://lmsweb.stfc.ac.uk/moodle/course/view.php?id=371>

At the log-in screen, either enter your existing login details and select 'External User Login' or, if you need to create an account, select 'External User? Click here to log in or register) in the bottom right of the page.



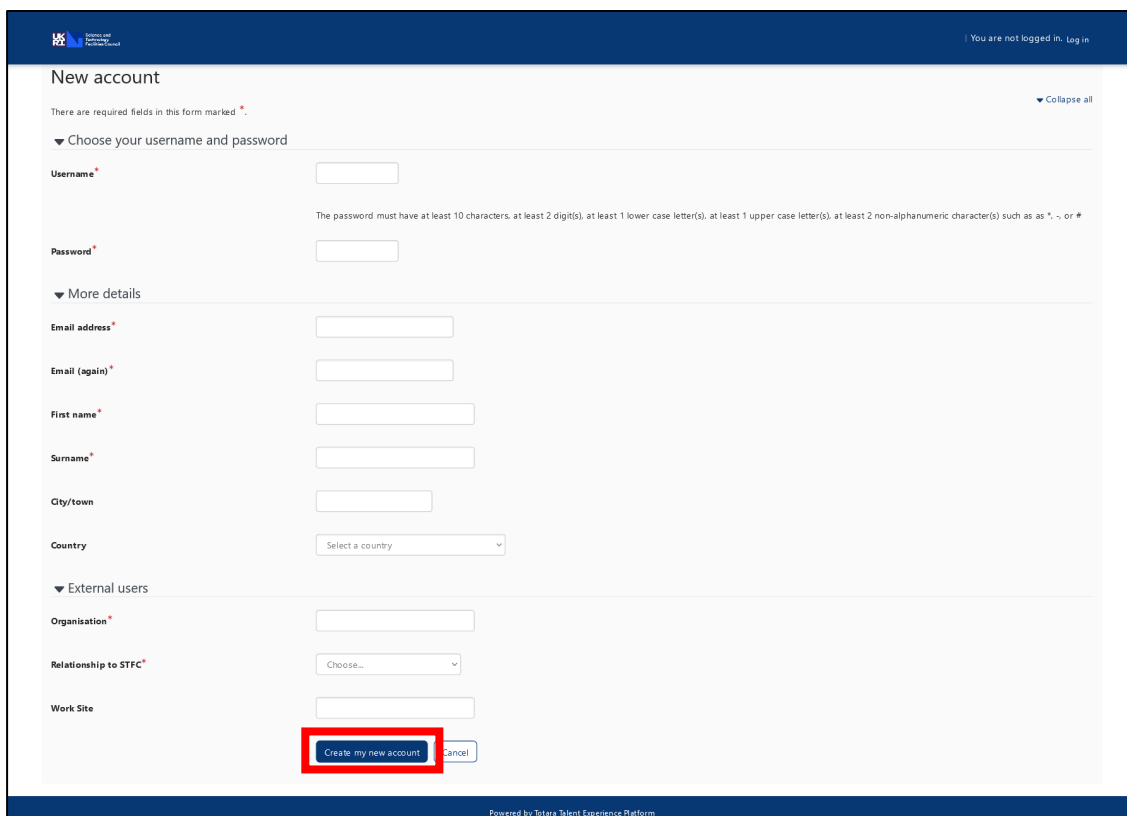
Then select 'Create new account'



Registering an account

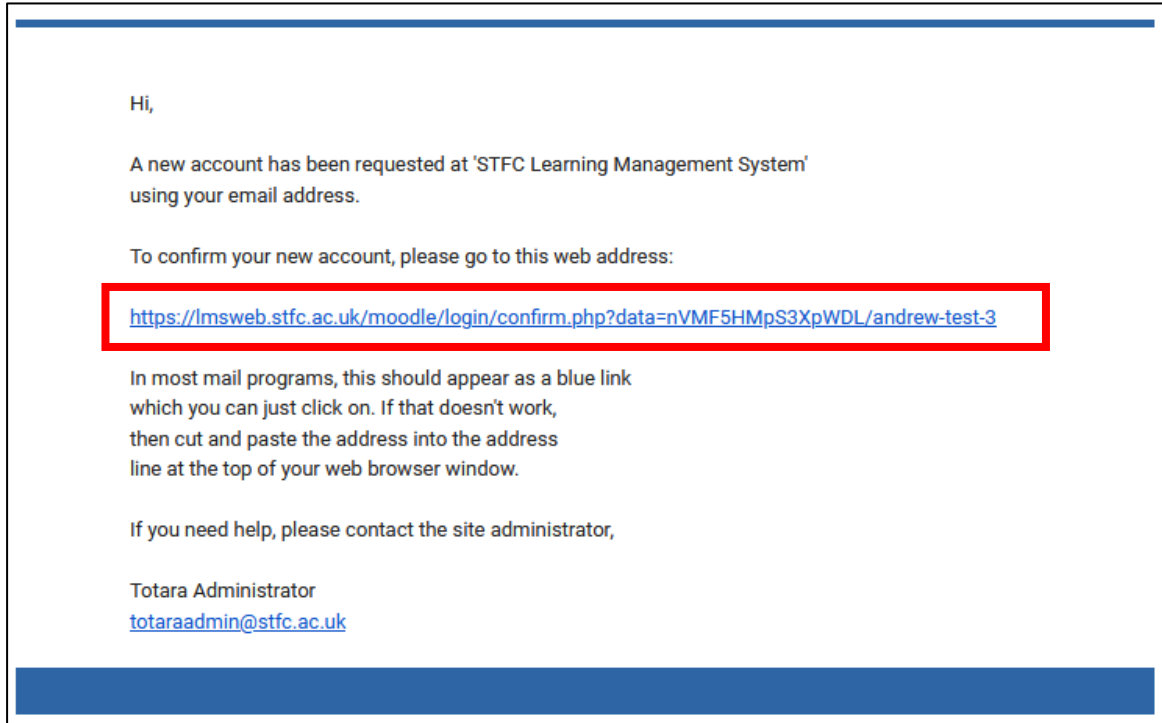
At the registration page complete the form with accurate information about yourself.

Once you have completed the form, select 'Create my new account' to continue. Try to complete as many fields as possible as this will help us find your account should you need assistance in the future. Required fields are marked with a red asterisk: *

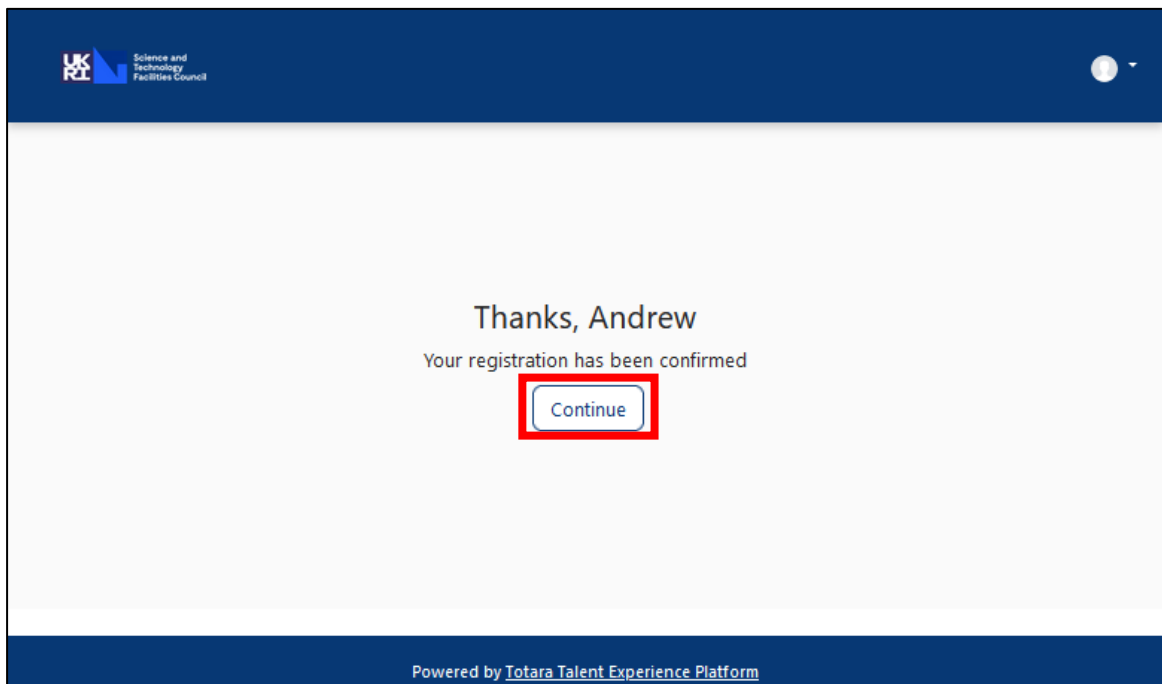


To continue you must now access and click the link in the confirmation email to activate your account.

Note: Gmail users may not see the email appear in their inbox because the email is categorised by Gmail as a “Promotion” email, you should be able to find the email by navigating to “All Mail” or through “Categories” > “Promotions”.



On clicking the link you will be taken to a page that will confirm your registration is complete. Clicking the “Continue” button will log you into your new account.





Once logged in, as the FLF Peer Review online training course is unlisted, you can access it by following the below link again:

<https://lmsweb.stfc.ac.uk/moodle/course/view.php?id=371>

For support accessing the training, please contact DIServiceDesk@stfc.ac.uk

For questions regarding the FLF scheme, please contact Fellows@ukri.org