

Research England

Strategic Institutional Research Funding Principles and assumptions

How Research England's Strategic Institutional Research Funding (SIRF) supports a healthy research sector

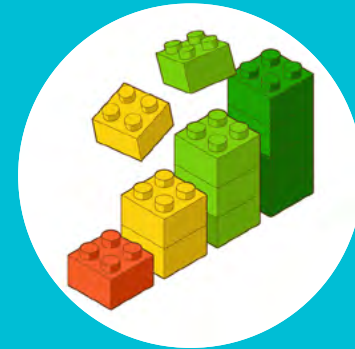
SIRF contributes to these overall aims in collaboration with funding from other sources

Principles



Enable research excellence

Supporting infrastructure, environment and culture to enable high-quality research outputs and impact



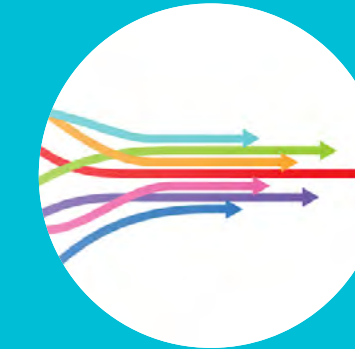
Contribute towards research sustainability

Enabling long-term financial and strategic planning



Support a healthy research sector

Supporting the wide range of institutions, research disciplines and missions



Address strategic priorities

Facilitating research responses to current and emerging local, national and global challenges

The purpose of SIRF and how Research England uses it to support the research sector

Objectives

Recognise research quality

across the wide range of research outputs



Enhance research infrastructure

and promote effective use across the sector

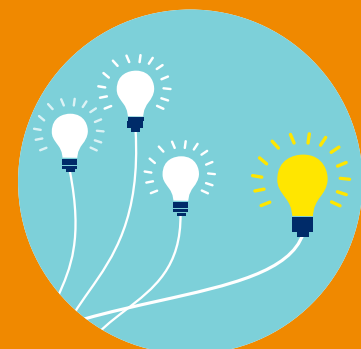
Balance transparency & burden

by considering administrative burden while evidencing value



Drive research impact

supporting connections with wider society to bring about positive socio-economic change



Enable HEP's strategic autonomy

providing flexibility to progress their own research strategies and priorities

Balance stability & dynamism

to enable longer term strategic planning and agile responses to emerging priorities



Enable partnerships

promote collaboration across the research sector, including higher education providers, industry, charities and communities

Support people & culture

building and maintaining an inclusive research system

Mechanisms



Research England uses two broad funding mechanisms to allocate SIRF

Flexible funding

can be used by HEPs to support any research activity

Ring-fenced funding

must be allocated to activities that support the specific aims of the fund

