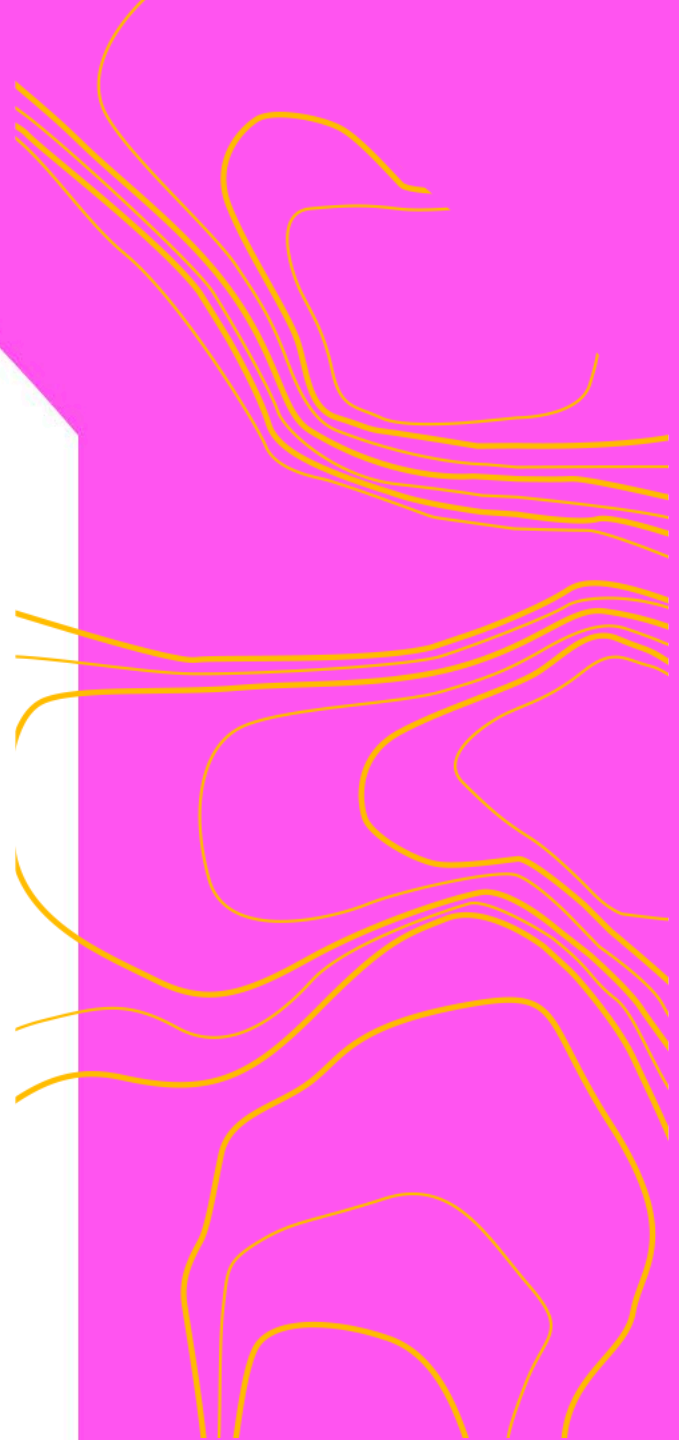




Biotechnology and
Biological Sciences
Research Council

2024 Bioinformatics and Biological Resources (BBR) Fund

Applicant Webinar



Who is involved in the call?

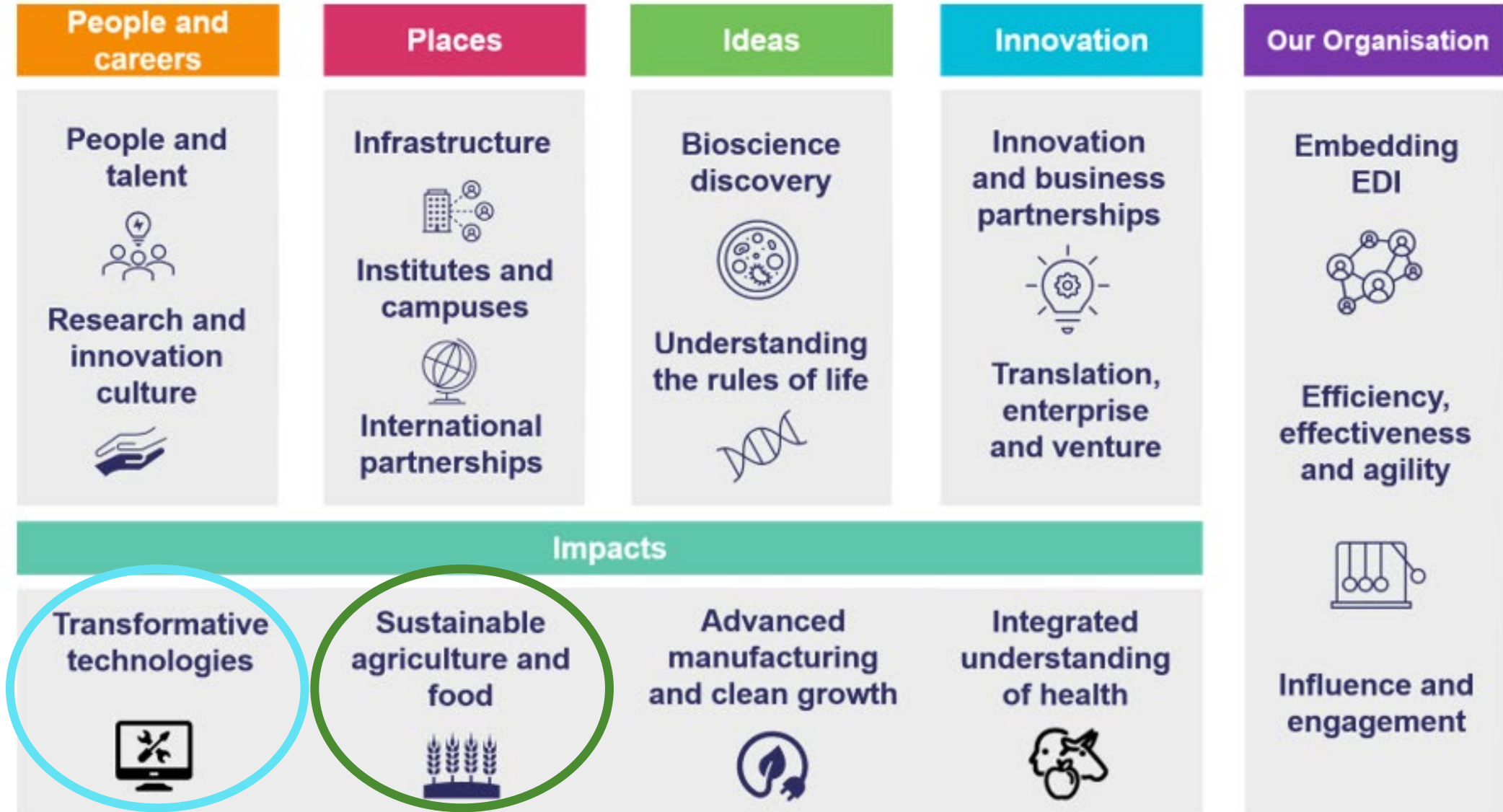
Who	Role
Ian Lewis	Head of Transformative Technologies
Phil Hubbard	Portfolio Manager - Transformative Technologies
Elly Tyacke	Senior Portfolio Manager Research and Innovation Funding Delivery
Anna-Ilona Pilchuk	Portfolio Manager Research and Innovation Funding Delivery
Debbie Harding	Senior Portfolio Manager Sustainable Agriculture and Food

Purpose

- Provide background to the 24BBR Opportunity
- Clarify the scope of 24BBR
- Explain the application and assessment process
- Introduce the new UKRI Funding Service



Background – BBSRC Transformative Technologies



Aim

Funding to implement, improve or consolidate bioinformatics or biological resources in support of UK bioscience, helping to drive forwards progress in bioscience research and innovation.

Funding for up to 5 years

Total fund: £7,000,000

**Maximum award:
£2,000,000 at 80% FEC**

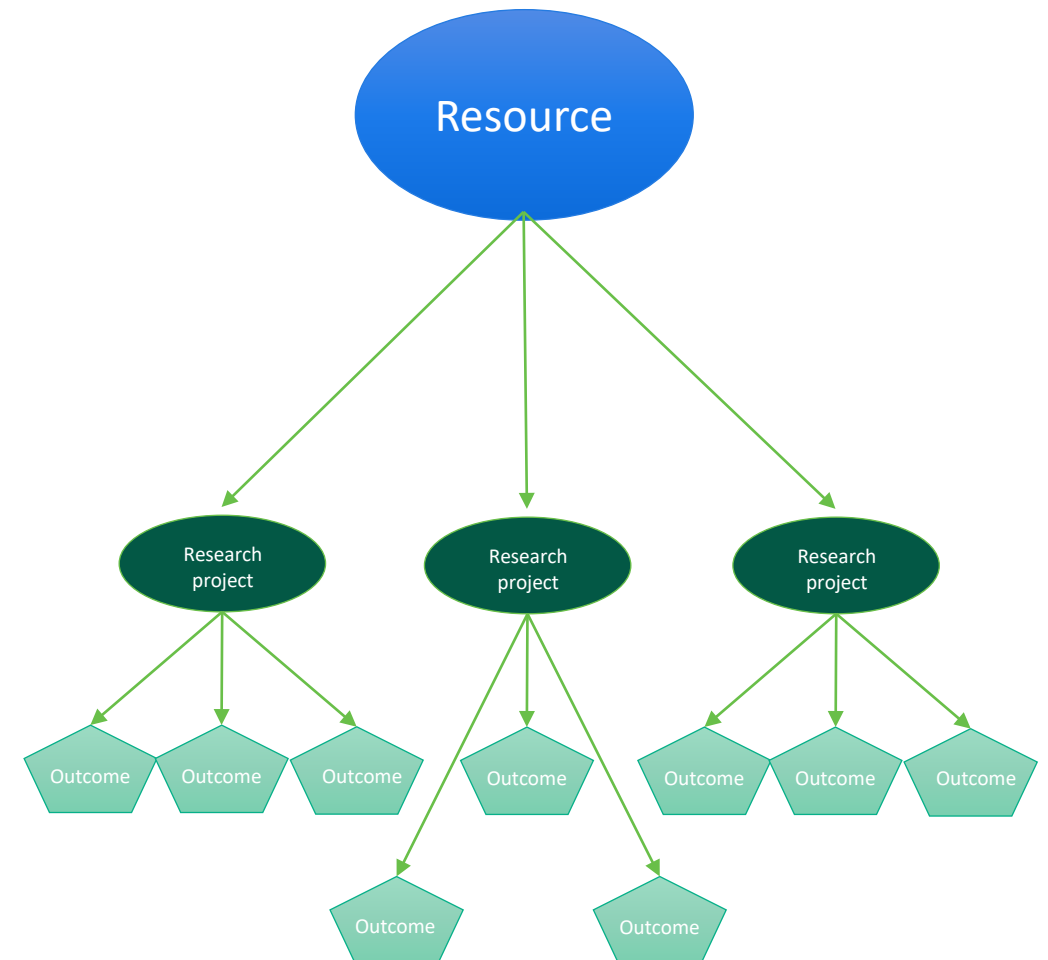
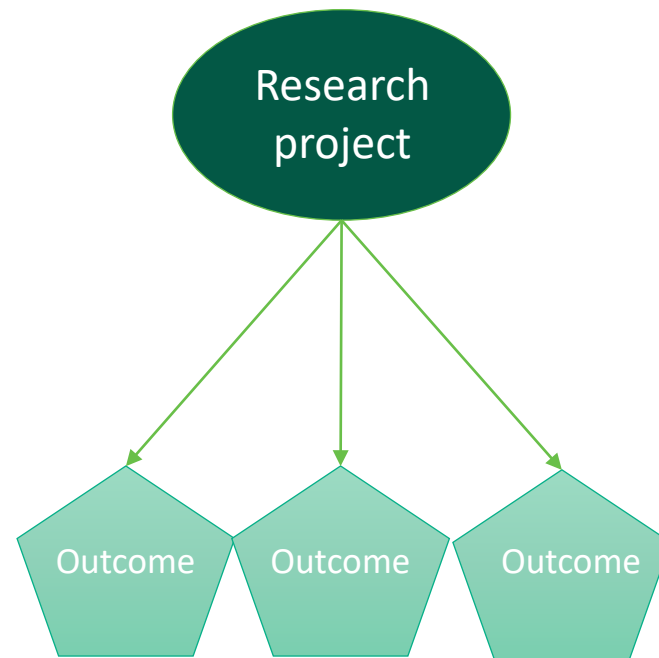
**Earliest start date:
16 September 2024**

Additional budget of up to £2m to support proposals relevant to the plant health spotlight

Bioinformatics and Biological Resources: Research Project vs Resource Funding

Biological Resources:
Materials that underpin cutting edge bioscience research (cultures, genetic libraries, mutant lines)

Bioinformatics Resources:
Management, analysis, and sharing of large/complex datasets (databases, software suites)



Scope

Establishment of a **new and innovative resource** that will be beneficial to a broader BBSRC user base

Maturation and subsequent maintenance of a project-based resource into a community-based one

Further development or essential maintenance of an existing community resource, with well-established access mechanisms, to increase its relevance, quality and utility

Association, or integration of distinct resources that will create an upgraded resource with a greater value than the sum of the parts

Out of Scope

No primary relevance to BBSRC's remit and mission
(e.g. generic software platforms applicable to any area of research)

The expected use of the resource and user communities **lack a clear focus within the biosciences** (e.g. biomedical and clinical data)

Primary aim is to address specific research hypotheses or questions, versus **building or enhancing a community resource**

Creation of data that could be placed in existing repositories, or that **lack strong justification for why there is a specific need to generate data as part of resource provision**

Resources already **suitably supported via other means**

Resources that only provide **institutional, or restricted access**

Collections of preserved, non-recoverable specimens, for example, herbaria, formalin-fixed material

Archive-only resources without active usage

Key points for 24BBR

**Transfer to The
Funding Service**

**Panel-only
assessment**

**Inclusion of a plant
health spotlight**

**Explicit inclusion of
AI/ML within scope**

Plant Health Spotlight

“Plant health underpins the sustainable production of food, as well as maintaining the natural environment around us. Recognising plant health as a particular area of current strategic interest, BBSRC launched a [plant health spotlight in our 2024 Responsive Mode scheme](#) to encourage submissions. The plant health spotlight in BBR aims to complement the Responsive Mode mechanism by encouraging submissions of resource proposals within the same discipline”

- An **additional** budget of up to £2m is available to support **at least one proposal** relevant to the Plant Health spotlight
- The final decision on whether a project falls within the scope of the plant health spotlight lies with BBSRC
- Final funding decisions will take account of the panel outcomes, quality of the applications received, and the portfolio of projects that can be supported using the available budgets

Assessment Criteria for 24BBR

24BBR is run on The Funding Service, the Assessment Criteria are:



Trusted Research & Innovation

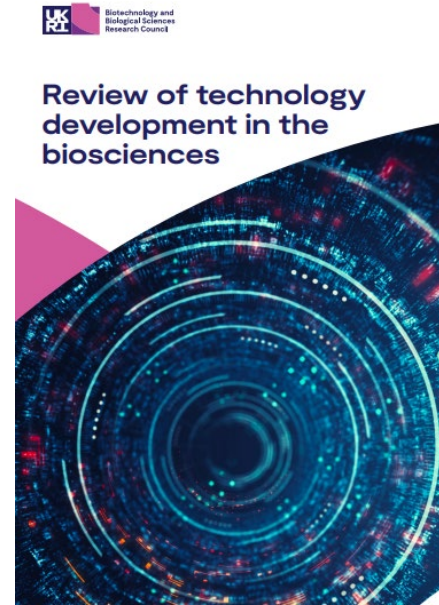
Does the proposed work involve international collaboration in a sensitive research or technology area?

Demonstrate how your proposed international collaboration relates to Trusted Research and Innovation, including:

- list the countries your international project co-leads, project partners and visiting researchers, or other collaborators are based in
- if international collaboration is involved, explain whether this project is relevant to one or more of the [17 areas](#) of the UK National Security and Investment (NSI) Act
- if one or more of the [17 areas](#) of the UK National Security and Investment (NSI) Act are involved, please identify which areas

Research Technology Professionals (RTPs)

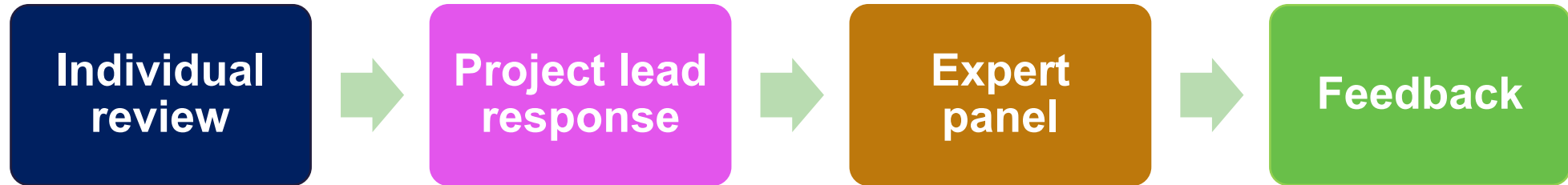
- Technician Commitment – recognition of RTPs
- **RTPs/RSEs are eligible to apply as project lead/project co-lead**
- **Provision of relevant training and upskilling opportunities should be costed.**



Timeline



Assessment process



Principles of assessment:

We support the San Francisco [declaration on research assessment](#) and recognise the relationship between research assessment and research integrity.

Find out about [the UKRI principles of assessment and decision making](#).

The new UKRI Funding Service (TFS)

Submitting your application

“We want to create an integrated research and innovation system that delivers for everyone” Professor **Dame Ottoline Leyser**, Chief Executive of UK Research and Innovation



Our Vision

UKRI’s Simpler and Better Funding (SBF) programme is creating a funding service that is easy to use and supports everyone involved in research funding.

The goal is that UKRI operates a single, consistent user-centred service that reduces the burden of finding, applying for and managing research funding, gives UKRI evidence to support funding the best ideas, can respond and adapt easily to change.



Biotechnology and
Biological Sciences
Research Council

Benefits of TFS

- Guidance and questions are consistent and in one place
- Questions reflect the assessment criteria
- Only ask for what we need once, when we need it.
- Fewer attachments.
- Accessible and intuitive interface
- Automated checks before submission e.g. word count

The screenshot shows the UKRI Funding Service interface. At the top, there's a navigation bar with 'UKRI UK Research and Innovation' on the left, 'Home Applications Reviews' in the center, and a user profile 'Jane Doe' on the right. Below this is a purple banner for 'Funding Service' with a 'BETA' tag and a message: 'This is a new service – your feedback will help us to improve it.' A link for '< Back to applications' is visible. The main content area is titled 'APP101791: test' and 'Application overview'. There are two buttons: 'Write application' and 'Read application'. A progress bar indicates '45% complete'. A table lists six sections with their completion status:

Section	Status
1. Details	Complete ✓
2. Applicants	Complete ✓
3. Resources and cost	Incomplete ✎
4. Case for support	Complete ✓
5. Related applications	Complete ✓
6. Research team and capability to deliver	Incomplete ✎

On the right side, there's a summary box with the following information:

- Opportunity:** OPP126: NC3Rs Project Grant Full 2022
- Application reference:** APP101791
- Applicant:** Jane Doe
- Application deadline:** Wednesday 30 November 2022, 4:00pm
- Funder(s):** MRC

Application overview

[Write application](#)
[Read application](#)

Contents

[Top of page](#)
[1. Details](#)
[2. Applicants](#)
[3. Vision](#)
[4. Approach](#)
[5. Team capability](#)
[6. References](#)
[7. Full economic cost and justification of resources](#)
[8. Animal usage](#)
[9. Conducting research with animals overseas](#)
[10. Other ethical considerations](#)
[11. Data management and sharing](#)
[12. Eligibility statement](#)
[Print this page](#)

This is what your application will look like.

Untitled application

1. Details [Edit](#)

Summary

No content has been added.

Start date

No content has been added.

Duration

No content has been added.

2. Applicants [Edit](#)

Name	Role	Organisation	Email
Matthew Weaver	Co-investigator	ZORG	matthew.weaver@ukri.org

3. Vision [Edit](#)

▶ View application question

asfsafa

4. Approach [Edit](#)

▶ View application question



Biotechnology and
Biological Sciences
Research Council

Applicants

- **Standard BBSRC eligibility rules apply**
- New harmonized grant roles being used across UKRI:
 - E.g. Project Lead (Principal Investigator) and Project Co-Lead (Co-Investigator)
- Use of Résumé for Research and Innovation (R4RI) to demonstrate a broader set of skills and experiences relevant to the project
- All about having the expertise and experience required to demonstrate capability to deliver the proposed project.
- Interdisciplinary collaborations - problem owner/solution provider approach is available.

Approach

How are you going to deliver your proposed work?

▼ [What the assessors are looking for in your response](#)

You should:

- provide clearly defined, ambitious, and adventurous objectives
- describe a suitable programme of work to achieve the project aim(s), indicating the experimental and data analytical research to be undertaken
- identify any particularly innovative, unconventional methodologies or approaches that will be explored
- describe key milestones where you may need to make decisions, track, or evaluate progress
- demonstrate your awareness of any potential challenges, risks, or limitations of the proposed project
- describe any alternative approaches, or the learning potential in the event of negative results

It may be helpful to include a diagram that provides a visual overview. This can be uploaded as an 8MB PDF attachment.

Number your references in this section using a superscript citation style. Then include the details of these references in a corresponding list, in the 'References' section of this application.

Paragraph
B
I
U
x²
x₂
☰
☰
☰
☰
🔗
📄

You have 1500 words remaining

File upload

▶ [Guidance for file upload](#)

No file chosen

Mark as complete

[Save and Return](#)

Need help with this service? [Contact us](#)

TFS Uploads

- Gantt Chart/diagrammatic workplan – insert as an image at the end of the APPROACH section
- Letters of Support (maximum 10) demonstrating community demand; upload a **single** pdf (maximum size: 8 MB) – **MANDATORY** for BBR
- Project partners Letters of Support – upload a **single** pdf
- Data Management Plan – attachment; please use template supplied on the Funding Finder

TFS Tips

- Complete your EDI profile – applications cannot be sent to the research office administrator unless this is completed
- Applications should be created by the project lead rather than a member of the project team or research office
- As soon as you start your research office administrator will have visibility of the application
- Your research office administrator will need time to approve the application - account for this!
 - Know who your contact is



TFS Tips, continued

For more guidance on the Funding Service, see:

- [how applicants use the Funding Service](#)
- [how research offices use the Funding Service](#)
- [how reviewers use the Funding Service](#)



Contact

For questions related specifically to 24BBR please contact bbr.fund@bbsrc.ukri.org

Questions regarding the system of TFS should be directed to the helpdesk: support@funding-service.ukri.org

TFS Helpdesk: 01793 547490

Ensure you reference “24BBR”.

We aim to respond to emails within five working days.



Medical
Research
Council

NIHR | National Institute for
Health and Care Research

MRC-NIHR Funding Opportunity

Enhancing Biomedical & Health-Related Data & Digital Platform Resources

- Invest in enhancing DRIs, services, tools and standards that are outward facing and support a harmonised data ecosystem
- £15m available (max £3.75m per application)
- Opening: 09 April 2024 – Closing 18 June 2024
- Pre-announcement now on funding finder
- Join our webinar 25th of April 12:30-13:30
- Call inbox - ddpr@mrc.ukri.org



Biotechnology and
Biological Sciences
Research Council

A detailed, high-magnification electron micrograph of a cell, showing intricate internal structures such as membranes, organelles, and protein complexes. The image is rendered in a grayscale palette with a blue tint, highlighting the complex, layered nature of the biological specimen.

Questions?