



Medical
Research
Council

NIHR | National Institute for
Health and Care Research

MRC-NIHR Enhancing Biomedical & Health- Related Data & Digital Platform Resources



Webinar outline – yes, it will be recorded

- Overview of funding opportunity Enhancing Biomedical & Health-Related Data & Digital Platform Resources
- Review process
- Application Advice
- Questions – please put them in Q&A (as opposed to Chat)



Medical
Research
Council

NIHR

National Institute for
Health and Care Research

Enhancing Biomedical & Health- Related Data & Digital Platform Resources

- £15m pilot MRC and NIHR opportunity developed with MRC, NIHR, the NHS Data for R&D Programme and external Advisory Groups
- Will invest in enhancing DRIs, services, tools and standards that are outward facing and create a stimulating and coherent data driven research environment
- Seeking to support those delivering a harmonised, interoperable and seamless data infrastructure ecosystem to advance UK life sciences, health and care research and innovation
- Applications don't need to incorporate all of these elements, but should aim to deliver impact that will contribute towards achieving this long-term vision.



Medical
Research
Council

NIHR

National Institute for
Health and Care Research

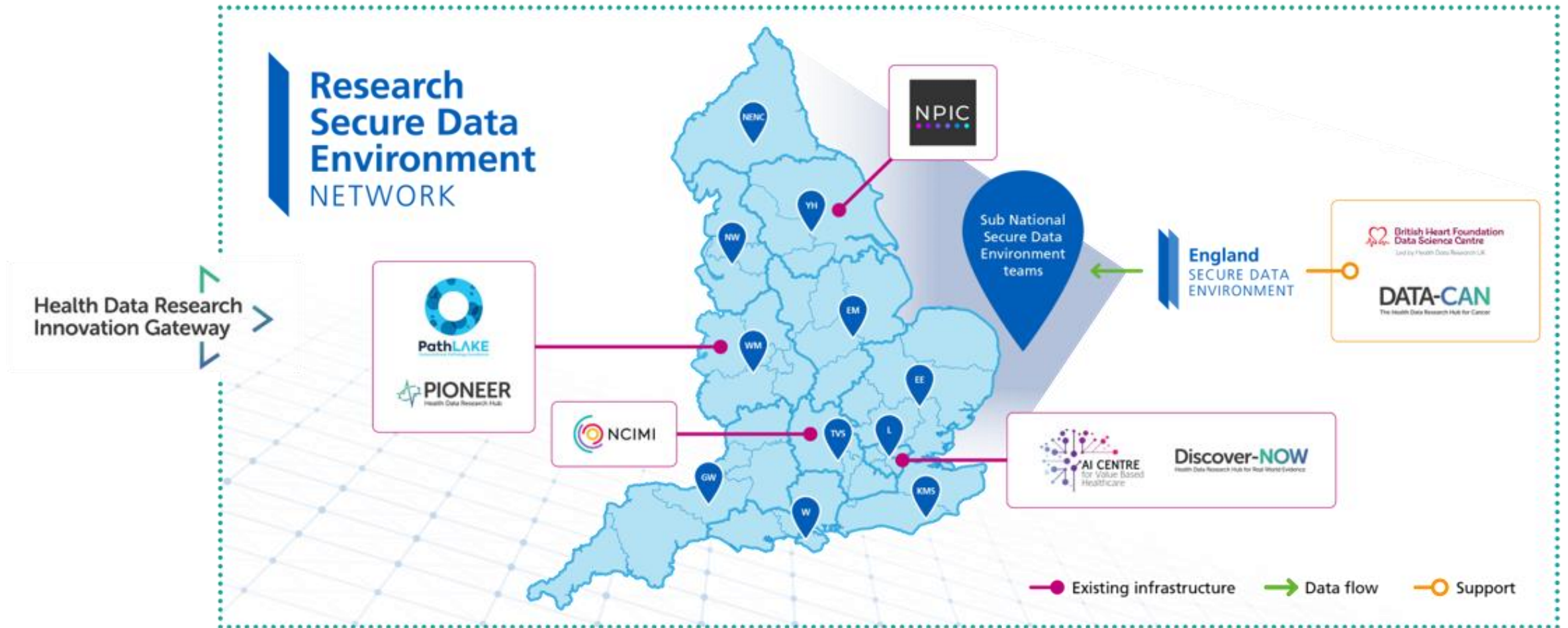
Streamlining secure access to the world's largest linked health datasets



Addressing needs through a federated Network of SDEs

- A single programme delivering access to 55 million population scale, whilst nurturing regional innovation
- Full coverage of rich multimodal data across imaging, pathology, genomics and structured data
- Access to NHS and academic partnerships for delivery for expertise and translational connectivity
- Underpinned by patient and public involvement and engagement
- Leverages full ecosystem capacity and prior investments

Leveraging prior investment



Enhancing Biomedical & Health- Related Data & Digital Platform Resources

Scope

We are looking for applications that will support, manage, link, share and access data at scale for use in cutting edge data science intensive research, including:

- Development of essential services and capabilities for users by to work seamlessly and within and across DRIs, e.g. mechanisms of data ingress
- Mechanisms to manage data and ensure that it is findable, accessible, interoperable, reusable (FAIR), including work on standards
- Developing and providing next generation software and tools for analytics
- Delivery of excellent services for life sciences, health and care researchers
- Unique linkage of health and health-related datasets
- Enhancing databases, platforms, environments and their operations



Medical
Research
Council

NIHR

National Institute for
Health and Care Research

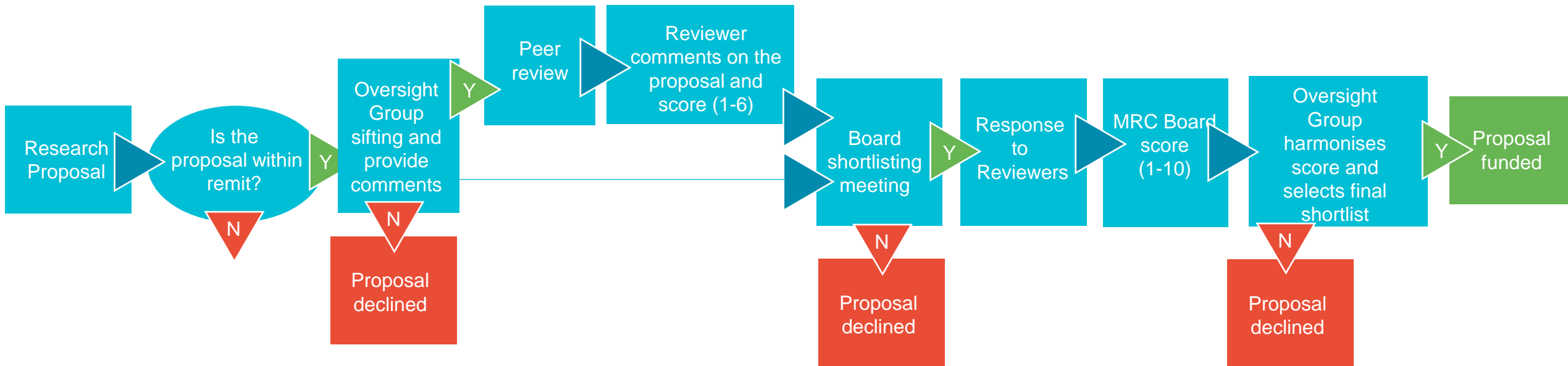
Enhancing Biomedical & Health- Related Data & Digital Platform Resources

Areas out of scope

- biomedical, health and care research that is suitable for funding through other mechanisms including routine MRC and NIHR calls for proposals
- applications that do not adequately address how they fit into current investments and the opportunity landscape
- applications that are substantially concerned with the provision of capital equipment (for example, computer hardware and storage)
- additional or duplicative equipment that is already part of the existing service or research environment of the applicants
- training (excepting costs for user support and training) and capacity building

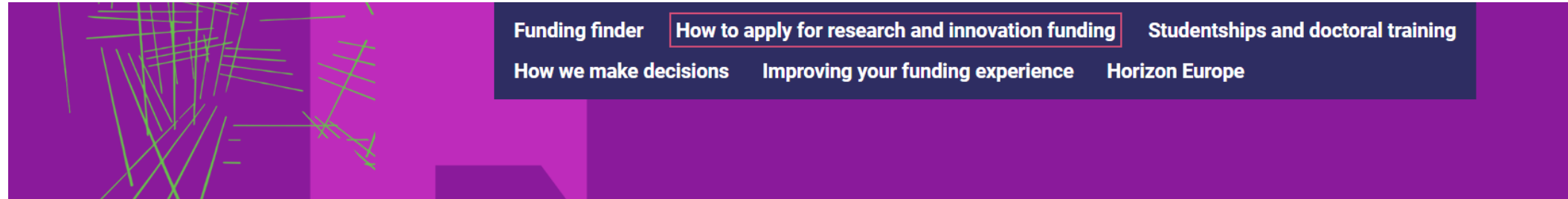
Enhancing Biomedical & Health- Related Data & Digital Platform Resources

Review process



Enhancing Biomedical & Health- Related Data & Digital Platform Resources

Applying



[Home](#) > [Apply for funding](#) > [How to apply for research and innovation funding](#) > [How applicants use the UKRI Funding Service](#)

How applicants use the UKRI Funding Service

This guidance is for applicants using the UKRI Funding Service. It gives an overview of:

- how to create your Funding Service account
- what you do when applying to a funding opportunity using the service
- the core sections, questions and assessment criteria for 'responsive mode'

Related content

- ⇒ [Council transition to the new Funding Service](#)



Medical
Research
Council

NIHR

National Institute for
Health and Care Research

Enhancing Biomedical & Health- Related Data & Digital Platform Resources

Application Advice

Pre-application:

- Talk to us! (**far in advance of your application!**)
- Engage key stakeholders, end-users and collaborators
- Internal peer review, if possible

ddpr@mrc.ukri.org



Medical
Research
Council

NIHR

National Institute for
Health and Care Research

Enhancing Biomedical & Health- Related Data & Digital Platform Resources

Framing:

- Be clear – in content and formatting!
- Frame your application to highlight how it will support a harmonised and seamless data infrastructure ecosystem and impacts this will have on UK life sciences, health and care research and innovation
- Pitch your proposal to be understood by a non-specialist audience – the majority of the Board and Oversight Group will not share your expertise



Medical
Research
Council

NIHR

National Institute for
Health and Care Research

Enhancing Biomedical & Health- Related Data & Digital Platform Resources

Key dates

- Opening date: 09 April 2024 09:00 AM
- Closing date: 18 June 2024 16:00 PM



Medical
Research
Council

NIHR

National Institute for
Health and Care Research

<https://www.ukri.org/opportunity/enhancing-biomedical-&-health-related-data-&-digital-platform-resources/>



Medical
Research
Council

NIHR | National Institute for
Health and Care Research

Thank you

[Email: ddpr@mrc.ukri.org](mailto:ddpr@mrc.ukri.org)



Medical Research Council



@The_MRC



Medical Research Council



NIHR



@NIHRRResearch



NIHRtv