

Research England

# Strategic Institutional Research Funding Principles and assumptions

How Research England's Strategic Institutional Research Funding (SIRF) supports a healthy research sector

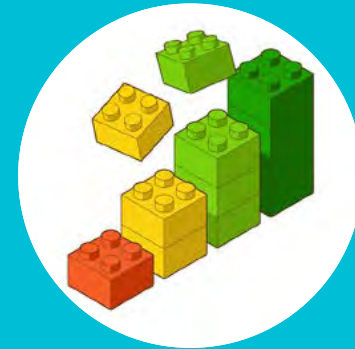
SIRF contributes to these overall aims in collaboration with funding from other sources

## Principles



### Enable research excellence

Supporting infrastructure, environment and culture to enable high-quality research outputs and impact



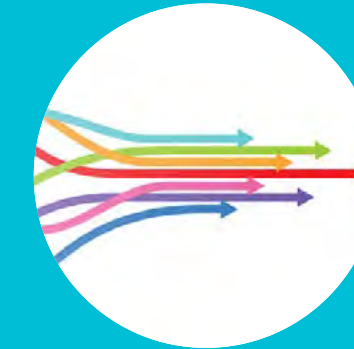
### Contribute towards research sustainability

Enabling long-term financial and strategic planning



### Support a healthy research sector

Supporting the wide range of institutions, research disciplines and missions



### Address strategic priorities

Facilitating research responses to current and emerging local, national and global challenges

The purpose of SIRF and how Research England uses it to support the research sector

## Objectives

### Recognise research quality

across the wide range of areas of research strength



### Enhance research infrastructure

and promote effective use across the sector

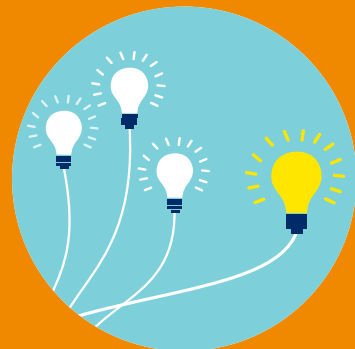
### Balance transparency & burden

by considering administrative burden while evidencing value



### Drive research impact

supporting connections with wider society to bring about positive socio-economic change



### Enable HEP's strategic autonomy

providing flexibility to progress their own research strategies and priorities

### Balance stability & dynamism

to enable longer term strategic planning and agile responses to emerging priorities



### Enable partnerships

promote collaboration across the research sector, including higher education providers, industry, charities and communities

### Support people & culture

building and maintaining an inclusive research system

## Mechanisms



Research England uses two broad funding mechanisms to allocate SIRF

### Flexible funding

can be used by HEPs to support any research activity

### Targeted funding

designed to address strategic priorities

