



Engineering and  
Physical Sciences  
Research Council

# Welcome





Engineering and  
Physical Sciences  
Research Council

# Early Career Researcher International Collaboration Grants

16 November 2022



Open funding route  
International development funding route

# Webinar Overview

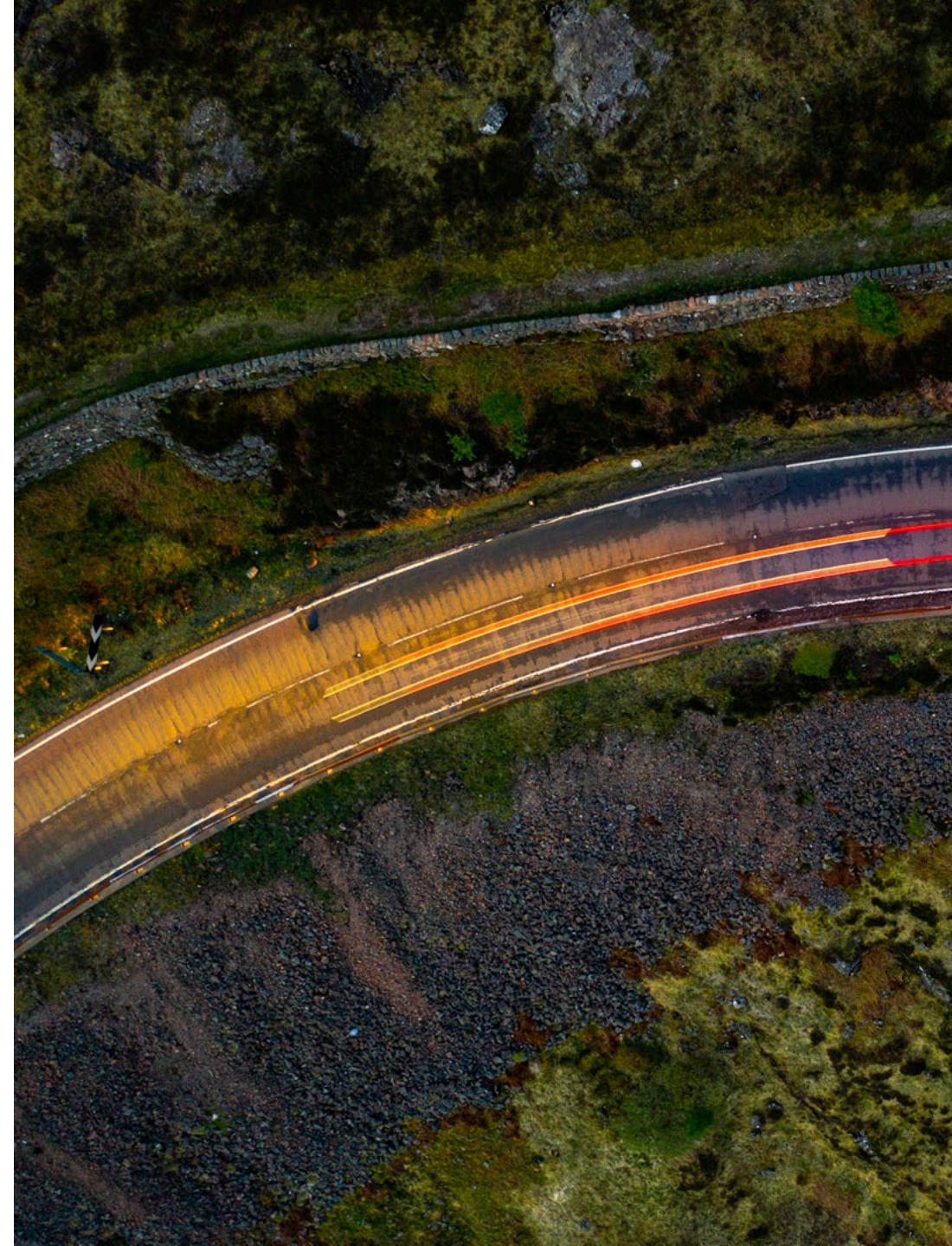
- Background to this funding opportunity
- What we're looking for
- Eligibility
- Open and International Development application routes
- Assessment & timescale
- Q&A session



# Background

As a result of this funding opportunity we want to be able to:

- Kick start fruitful international links across EPSRC's remit.
- Support early career researchers looking to develop research activities with international collaborators.
- Enable UK researchers to target their research to tackling international development challenges.



# What we're looking for

- Opportunity for ECRs to initiate and build new international partnerships with researchers overseas.
- You and your international collaborators may have a previous relationship, but we do not expect you to have worked together extensively.
- Balance between partnership building activities and direct research.
- The international collaborators must also have an integral role in the proposed work.
- Open to all EPSRC research areas.



# What we're looking for

- Request funding to support any eligible international collaborative activities.
- Two parallel funding routes: open and international development.
  - [Open](#): collaborate with partners from any country.
  - [International development](#): collaborators in lower middle income, low income or least developed countries and project must meet ODA compliance.



# Eligibility

- Open to early career researchers who meet the [eligibility requirements](#) of the EPSRC New Investigator Award (NIA) scheme.
- This criteria considers your contractual, application history and funding history eligibility.
- Applicants who apply for an early career researcher international collaboration grant are still eligible to apply for NIA.
- Applicants who have previously applied for NIA but otherwise still satisfy the other NIA eligibility criteria are still eligible to apply to this funding opportunity.



# Funding available

- Up to £5 million (across open and international development)
- fEC up to £200,000.
- Maximum duration of 24 months.
- Support may be requested for international collaborations.
- Equipment over £10,000 (including VAT) is not available.
- Smaller items of equipment (under £10,000) can be included.





# Trusted Research

- UKRI is committed in ensuring that effective international collaboration in research and innovation takes place with integrity and within strong ethical frameworks.
- Trusted research and innovation is a UKRI work programme designed to support cross-sector campaigns that protect all those working in our thriving and collaborative international sector.
- UKRI [trusted research and innovation principles](#).
- CPNI [trusted research guidance](#).

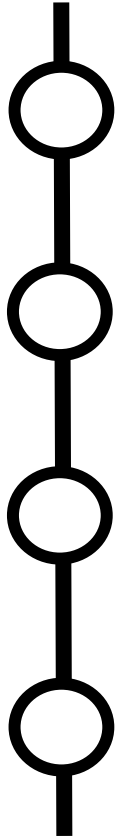




Engineering and  
Physical Sciences  
Research Council

# Application process

# Timeline



Intention to submit deadline: 7 December 2022 1600

**Closing date: 18 January 2023 1600**

Expected awards: May 2023

Grant start: Summer 2023



# Open vs. International development funding route

## Open

- Collaborators from any country – can be developed or developing countries. Does not have to be both.
- The primary aim of the research should have UK strategic value.
- Support may be requested for international partners as per standard EPSRC visiting research guidelines.

## International Development

- At least one collaborator should be based in a lower middle income, low income or least developed country on the [DAC list](#).
- Primary aim of the research should be to address a challenge faced by a developing country – i.e. ODA compliant research.
- Collaborators from a developing country can be listed as a Co-investigator and can claim salary and other consumable costs.

# Submitting your application

Additional requirements for the [development route](#) are detailed in the next section of the slides.

Document	Maximum Pages	Details
Case for support	2 on track record, 6 on scientific case	The track record should cover the UK and international partners
Workplan	1	-
Justification of resources	2	-
CVs	2 pages each	Required for named PDRAs, researcher CoIs, visiting researchers
Letters of support	No page limit	Required from all project partners
Technical assessment	No page limit	For facilities listed as requiring one in Je-S
Host organisation letter of support	2 pages	-
Cover letter	No page limit	You should use this to describe how your experience and career history fit with the eligibility guidance.



International partners should be included as project partners or visiting researchers for the [open route](#). For the [development route](#), international co-investigators are permitted.

# Assessment process

- Proposals will be assessed by an expert panel.
- Prior to the prioritisation panel, introducers can request additional information from you under all or some of the assessment criteria. This is estimated to be in March 2023.
- You will be given the chance to respond, which will be considered in the ranking of proposals. You will have 2 weeks to respond and a maximum of 2 pages.



# Assessment criteria

- Quality (primary)
- Applicants and partnership (primary)
- Importance (secondary major)
- Resources and management

More information on these criteria can be found on the [funding pages](#).



# Other considerations

- [Equality, Diversity and Inclusion](#)
- [Trusted Research and Innovation](#)
- [Sustainability](#)
- [Responsible Innovation](#)
- The recent [agreement](#) between UKRI and Research Council of Norway is not in remit for this opportunity.





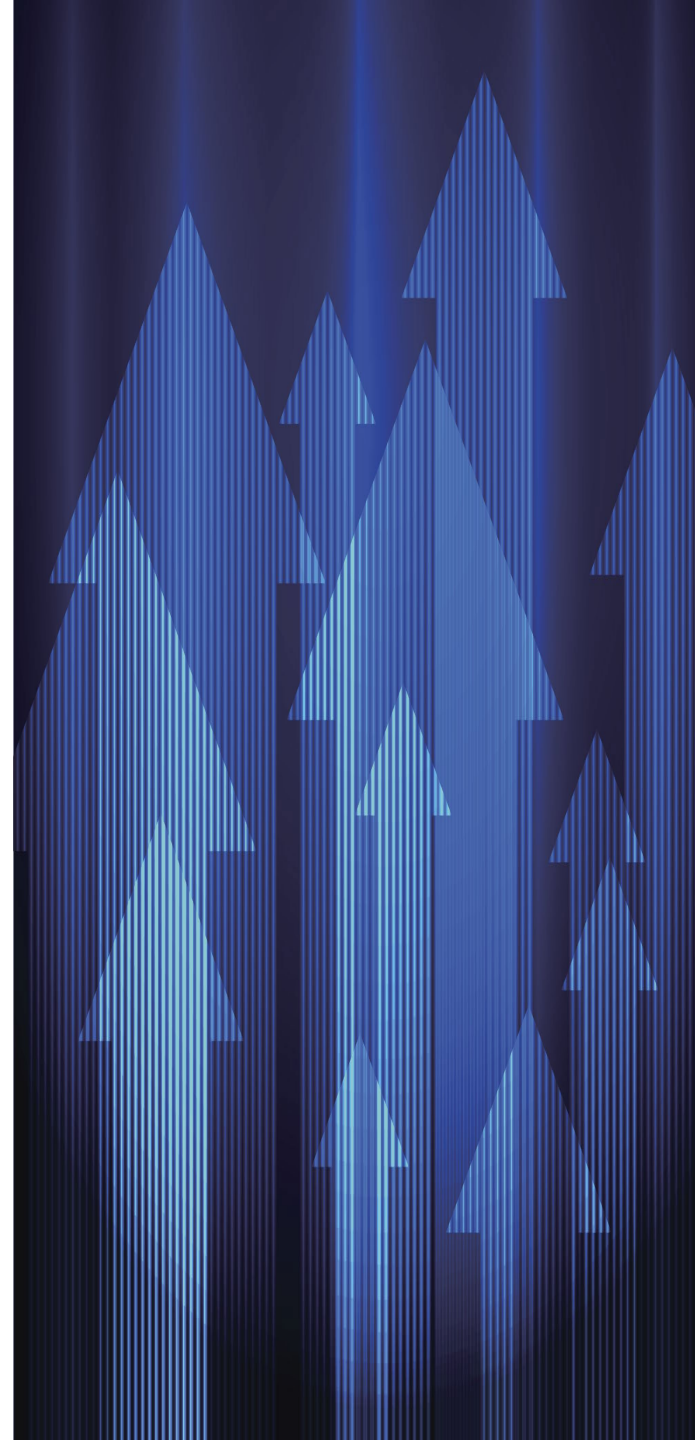


Engineering and  
Physical Sciences  
Research Council

# International development funding route

# Official Development Assistance (ODA)

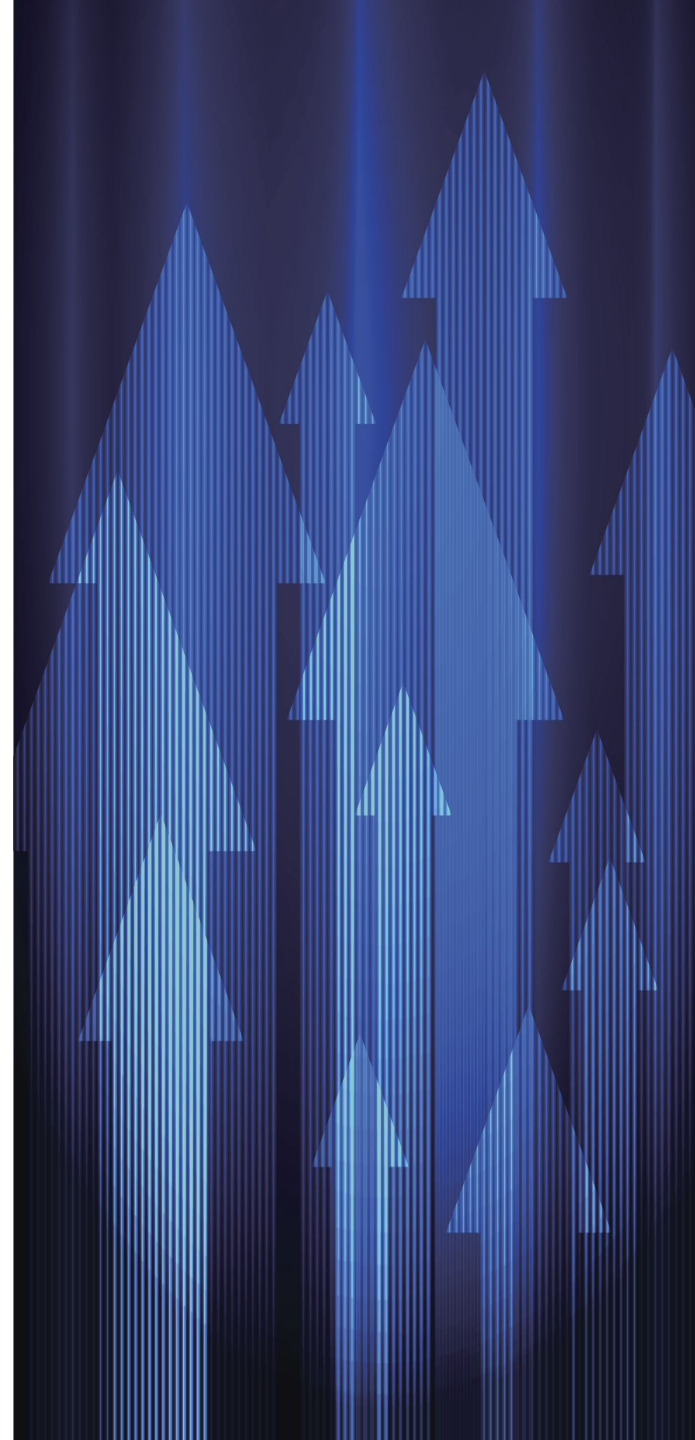
- Government aid that promotes and specifically targets the economic development and welfare of lower middle income, low income or least developed countries on the [DAC list](#).
- Activities can occur within the UK and, or the partner country – end-usage must tackle development changes within the developing country.
- Proposals should focus on specific challenges within the partner country and not broader global issues.



# Additional documents

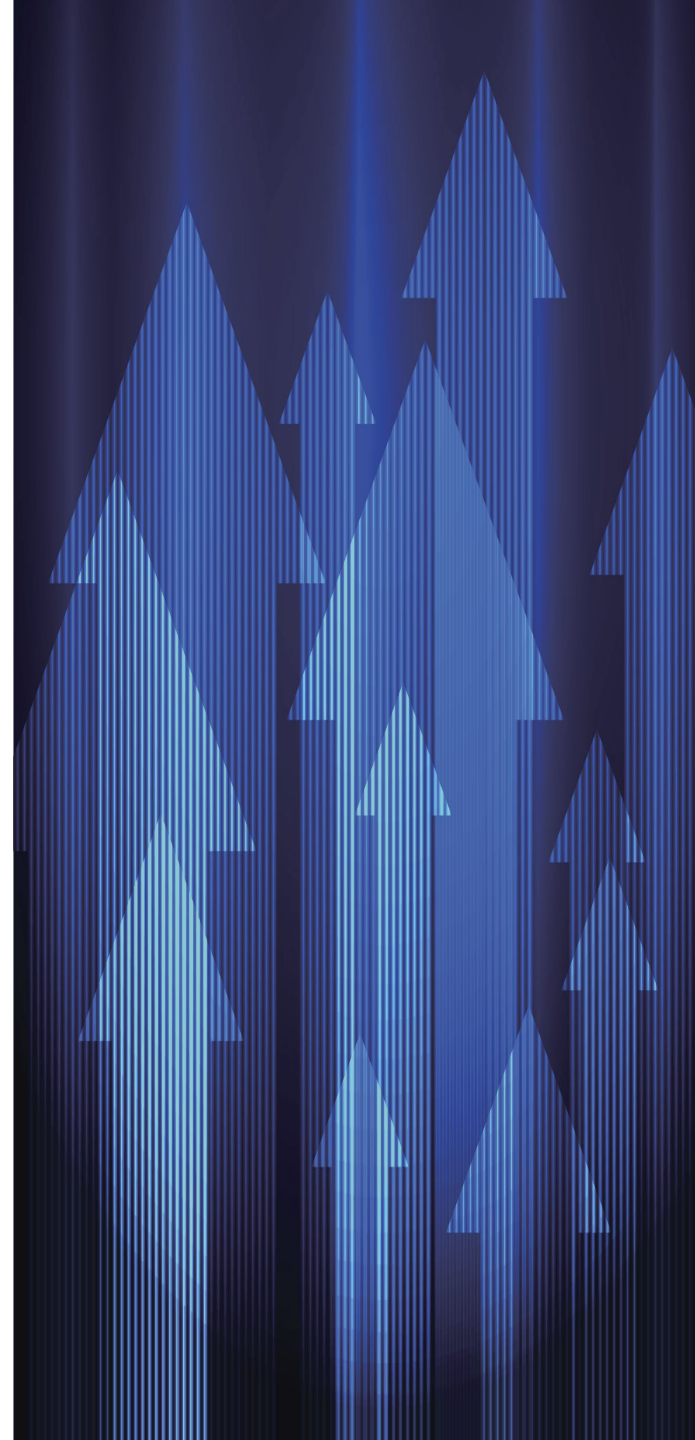
There are two additional attachments required for your development route submission:

- ODA compliance statement
- Gender equality statement



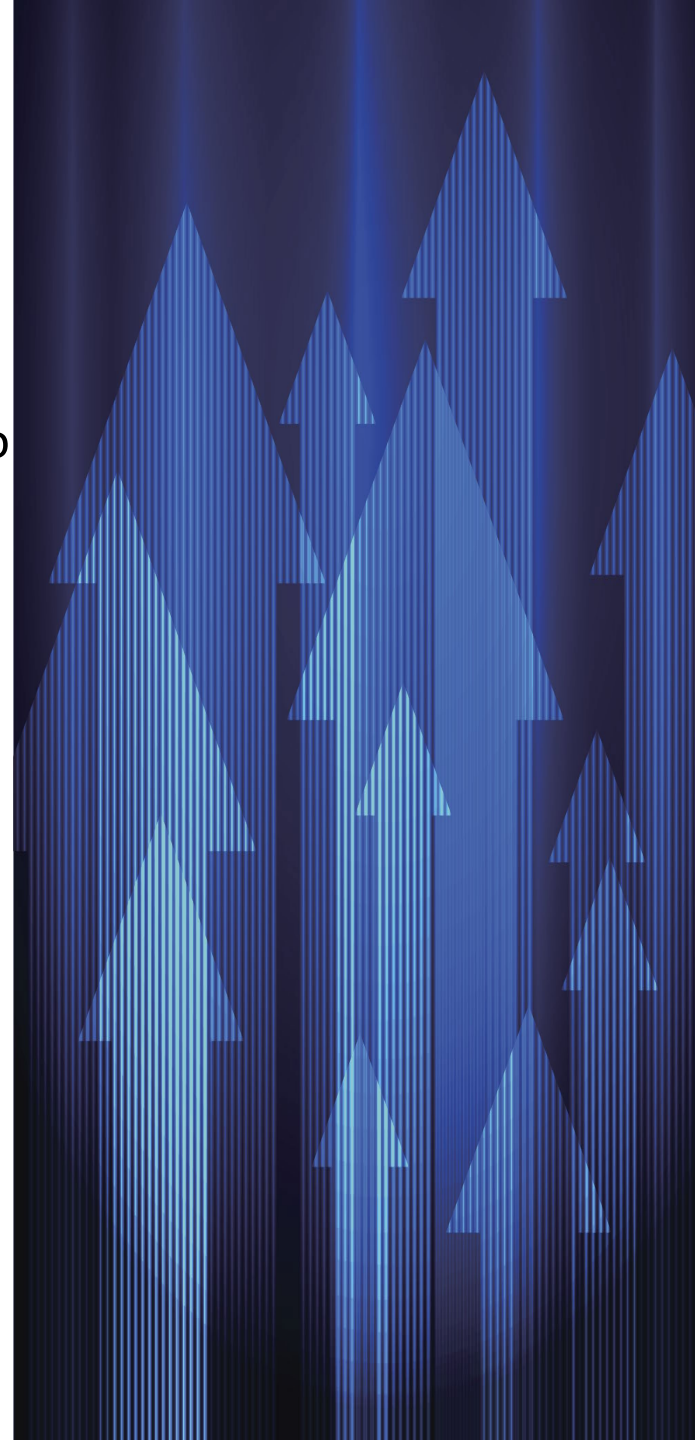
# ODA compliance statement

- Up to 1 side of A4, attachment type 'non-UK components'
- Which countries on the DAC list of ODA recipients would like to work with?
- How is your proposal directly relevant to the development challenges of this country? And how will the outcomes promote economic development and welfare?
- What approaches will you use to deliver development impact within the lifetime of the project and beyond?



# Gender equality statement

- Up to 1 side of A4, attachment type 'non-UK components'
- Are there equal and meaningful opportunities for people of different genders to be involved throughout the project?
- What is the impact on relations between people? e.g., changing roles and responsibilities in households, society, politics, etc
- How will risks or unintended negative consequences on gender equality be avoided, mitigated and monitored?
- Are there any relevant outcomes/outputs being measured?



# How will these additional documents be assessed?

## **Fit to opportunity: ODA compliance (primary)**

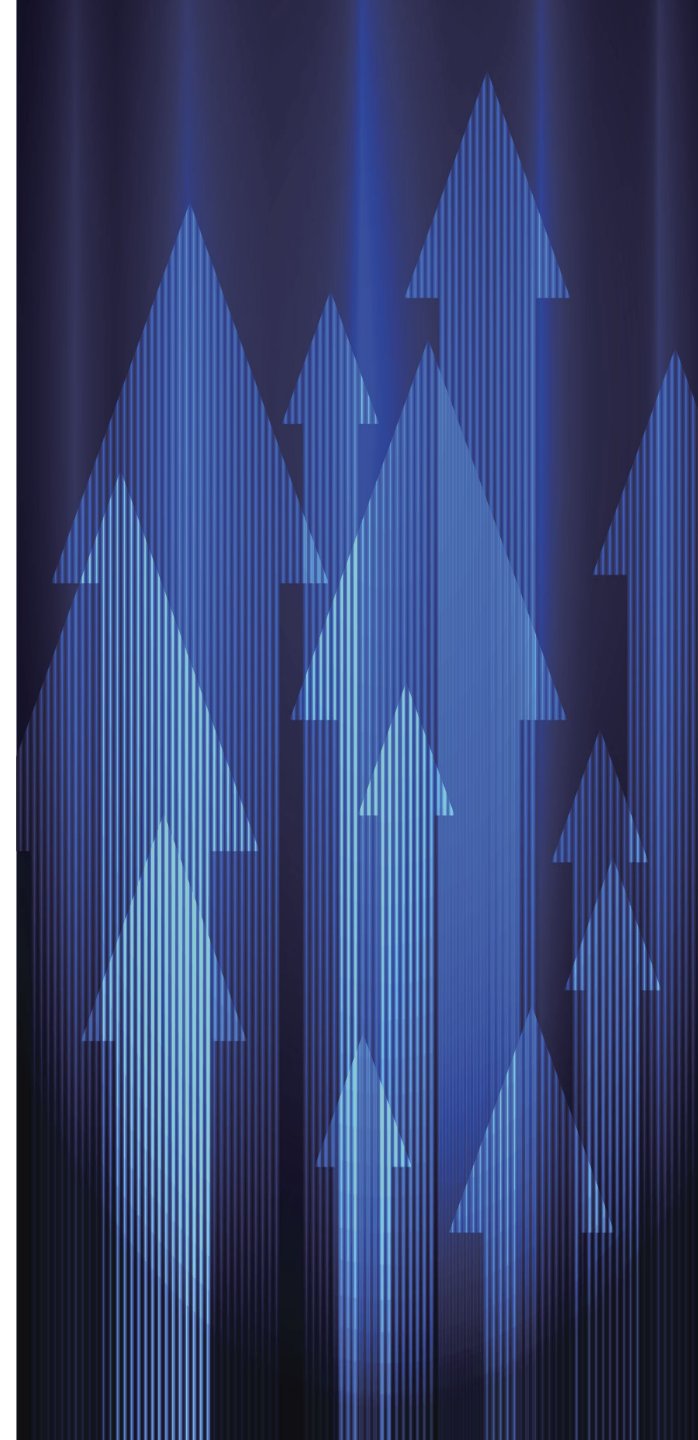
Proposals should:

- have a primary benefit of the economic development and welfare of developing countries
- meet other elements of compliance with ODA funding

## **Importance (secondary major)**

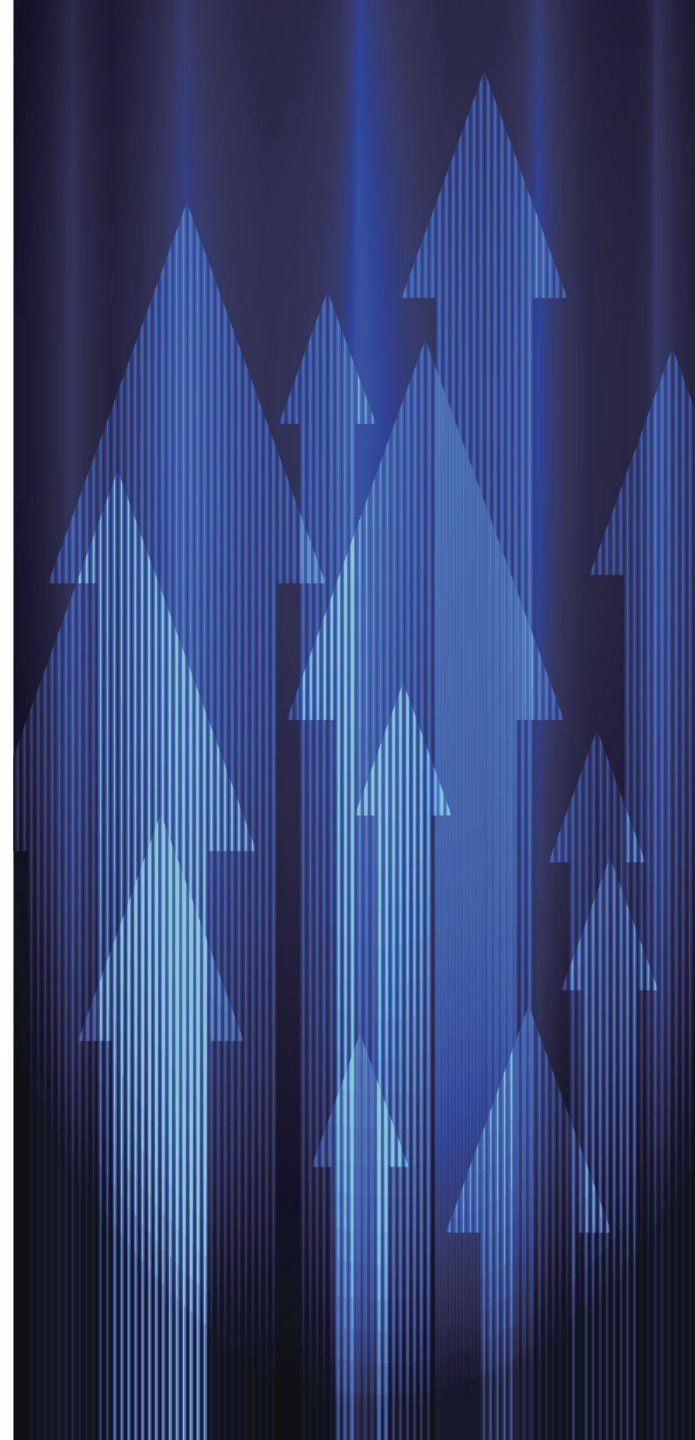
How the research:

- contributes to the international development needs in the partner lower middle income, low income or least developed country or countries



# How will these additional documents be assessed?

- The expert panel will comment on the appropriateness of your gender equality statement.
- If there is insufficient consideration of gender equality, or there is potential for the research to exacerbate inequalities, you may be required to review your approach in order to address this.
- The panel will have the discretion to make funding conditional on a sufficient revised approach to gender equality.

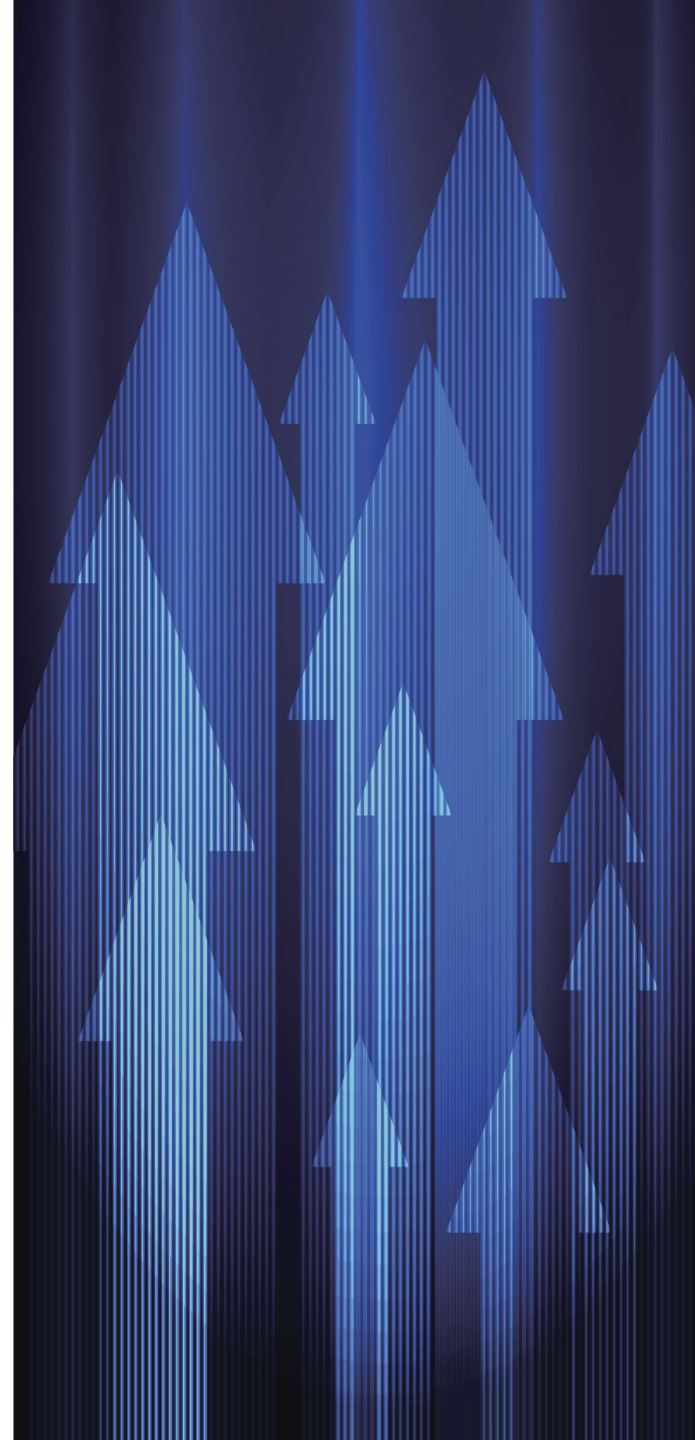


# Eligible overseas costs – development

Costs from developing countries are permitted. The following costs are eligible for Costs and researchers from developing countries:

- ✓ Salary costs for overseas co-investigators and researchers
- ✓ Travel and subsistence for overseas researchers
- ✓ Other directly incurred costs e.g. consumables, field work
- ✓ Contribution towards other directly incurred indirect and estate costs
- ✓ Travel and subsistence for UK-based researchers going abroad to undertake work.

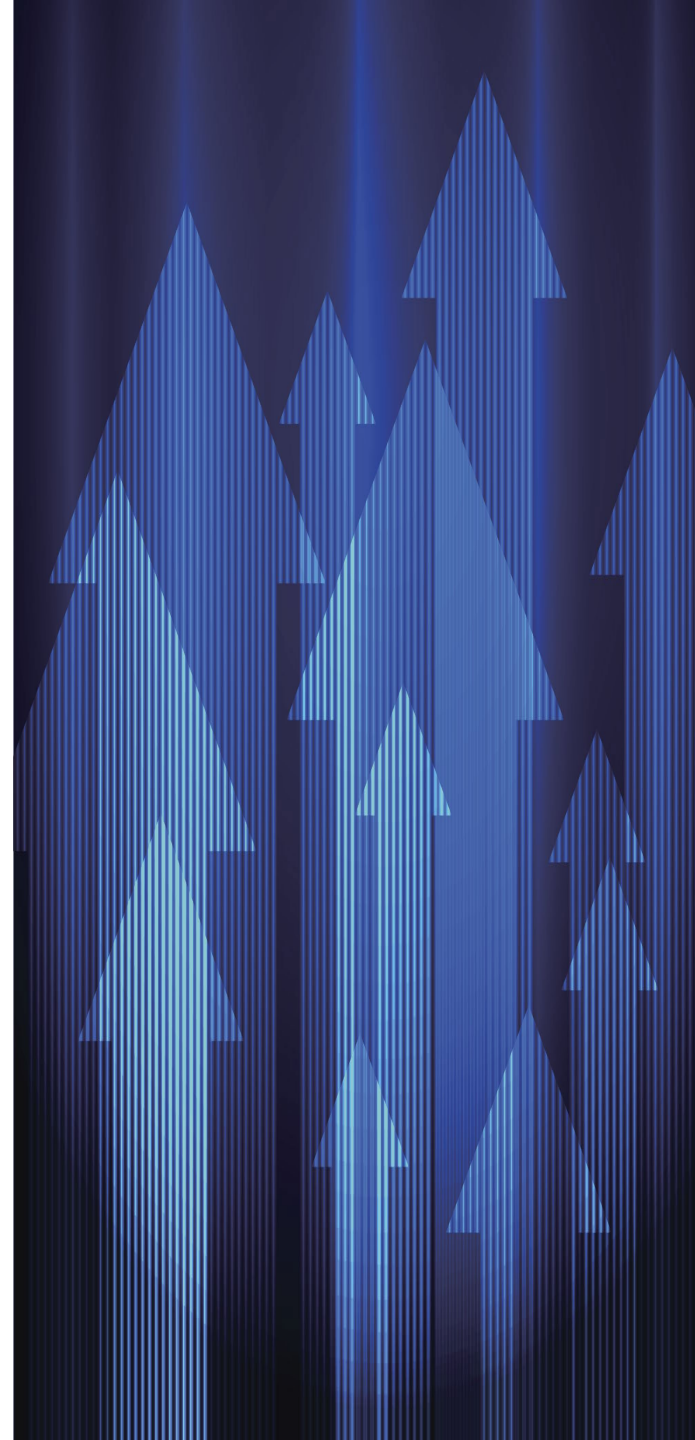
Additional project partners from other countries are permitted subject to standard EPSRC funding rules.





# Resources – development

- [DAC List of ODA Recipients](#)
  - [2022/23 list](#) – countries listed under least developed, low income and lower middle income are eligible for this opportunity.
- [UKCDR and ESSENCE Good Practice Document \(2022\)](#)
  - ‘Four approaches to supporting equitable research partnerships’
- [The 17 Sustainable Development Goals \(SDGs\)](#)

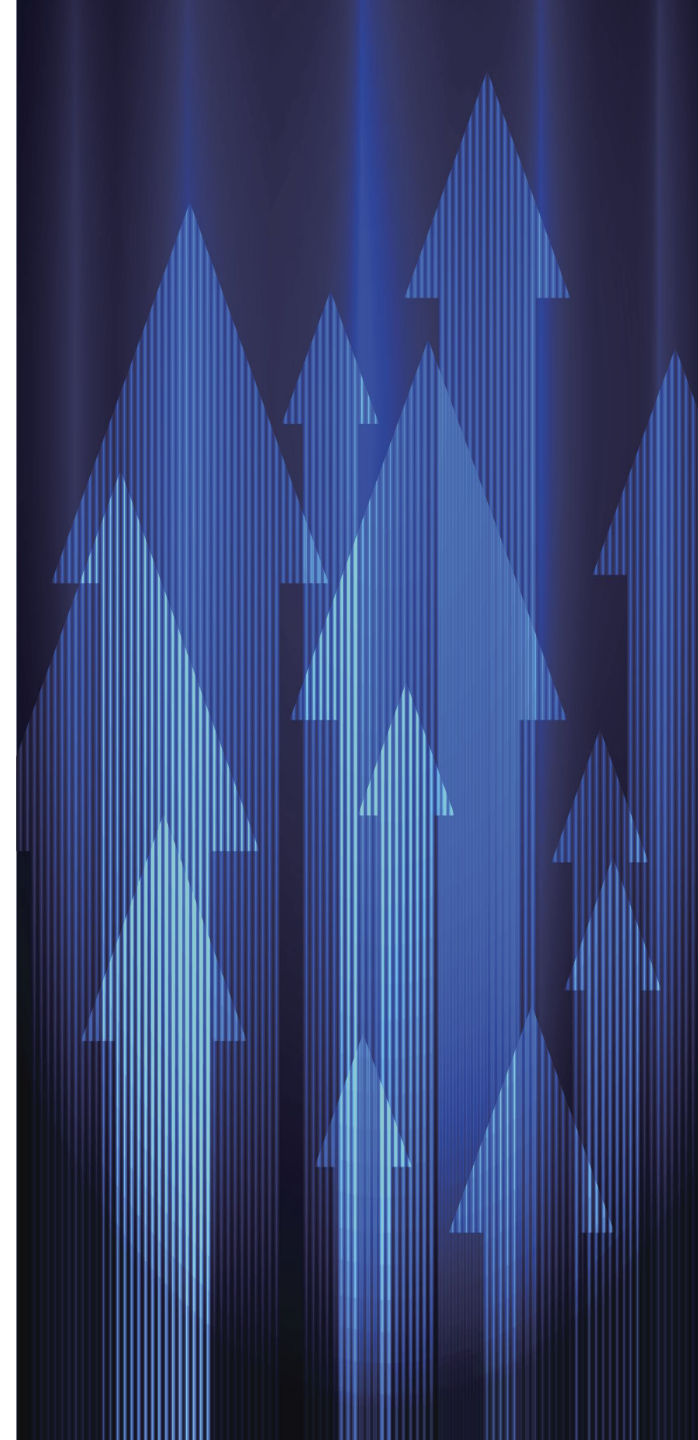


# Eligible overseas costs

Cost	Open	Development
Travel for UK researchers to partner labs	✓	✓
Extended overseas visits of UK based research staff	✓	✓
Hosting costs for overseas visitors in UK	✓	✓
Consumables of UK researchers while working overseas	✓	✓
Cost of transporting equipment used in joint experiments	✓	✓
Use of DTP funds to support EPSRC funded students in visits	✓	✓
Costs of overseas researchers while at UK institutions	✓	✓
Costs of overseas researchers at overseas institutions	✗	✓
Costs incurred by research undertaken by collaborators	✗	✓
Research projects led by non-UK institutions	✗	✗



Further guidance on EPSRC's visiting researcher policy can be found on our [costs you can apply for](#) page and the [Je-S handbook](#).





Engineering and  
Physical Sciences  
Research Council

# Questions?



Engineering and  
Physical Sciences  
Research Council

# Thank you

Please get in touch  
[International@epsrc.ukri.org](mailto:International@epsrc.ukri.org)



Engineering and Physical Sciences Research Council



@EPSRC



EPSRCvideo